

PLAC4 Antibody
Catalog # ASC11222**Specification**

PLAC4 Antibody - Product Information

Application	WB, IF, ICC, E
Primary Accession	Q8WY50
Other Accession	NP_878252 , 121949815
Reactivity	Human
Host	Rabbit
Clonality	Polyclonal
Isotype	IgG
Application Notes	PLAC4 antibody can be used for detection of PLAC4 by Western blot at 1 - 2 µg/mL. Antibody can also be used for immunocytochemistry starting at 10 µg/mL. For immunofluorescence start at 20 µg/mL.

PLAC4 Antibody - Additional Information

Gene ID	191585
Target/Specificity	
PLAC4;	

Reconstitution & Storage

PLAC4 antibody can be stored at 4°C for three months and -20°C, stable for up to one year. As with all antibodies care should be taken to avoid repeated freeze thaw cycles. Antibodies should not be exposed to prolonged high temperatures.

Precautions

PLAC4 Antibody is for research use only and not for use in diagnostic or therapeutic procedures.

PLAC4 Antibody - Protein Information

Name PLAC4

Synonyms C21orf115, D21S418E

Tissue Location

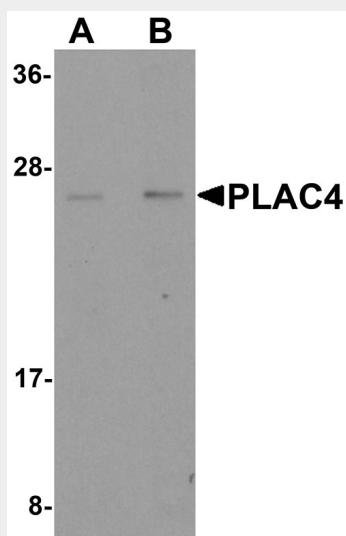
Expressed in placental syncytiotrophoblast and choriocarcinoma cells.

PLAC4 Antibody - Protocols

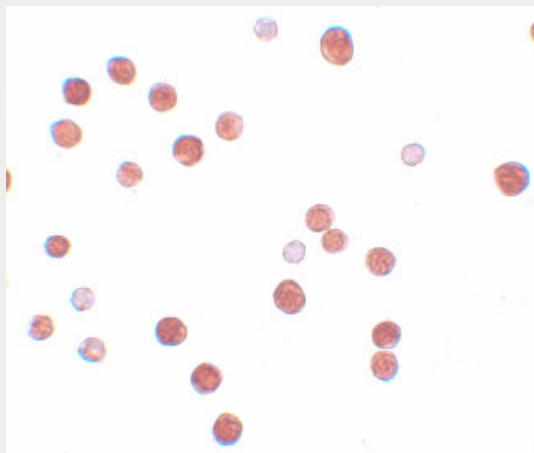
Provided below are standard protocols that you may find useful for product applications.

- [Western Blot](#)
- [Blocking Peptides](#)
- [Dot Blot](#)
- [Immunohistochemistry](#)
- [Immunofluorescence](#)
- [Immunoprecipitation](#)
- [Flow Cytometry](#)
- [Cell Culture](#)

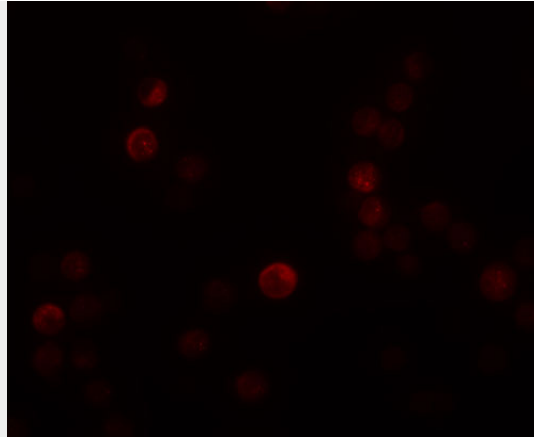
PLAC4 Antibody - Images



Western blot analysis of PLAC4 in human placenta tissue lysate with PLAC4 antibody at (A) 1 and (B) 2 $\mu\text{g/mL}$.



Immunocytochemistry of PLAC4 in HeLa cells with PLAC4 antibody at 10 $\mu\text{g/mL}$.



Immunofluorescence of PLAC4 in HeLa cells with PLAC4 antibody at 20 µg/mL.

PLAC4 Antibody - Background

PLAC4 Antibody: PLAC4 (placenta-specific protein 4), was initially discovered as a gene whose mRNA was expressed in placental syncytiotrophoblast and choriocarcinoma cells. While the function of PLAC4 is currently unclear, its gene is known to be located on chromosome 21q22.3. Due to the PLAC4 gene location on chromosome 21 and the release of its mRNA transcripts into maternal bloodstream from the placenta, it has been proposed to be a useful marker noninvasive prenatal chromosome 21 aneuploidy detection, although other reports suggests that PLAC4 mRNA levels are not altered in the maternal circulation of pregnancies with trisomy 21.

PLAC4 Antibody - References

Kido S, Sakuragi N, Bronner MP, et al. D21S418E identifies a cAMP-regulated gene located on chromosome 21q22.3 that is expressed in placental syncytiotrophoblast and choriocarcinoma. *Genomics*1993; 17:256-9.

Lo YMD, Tsui NBY, Chiu RWK, et al. Plasma placental RNA allelic ratio permits noninvasive prenatal chromosomal aneuploidy detection. *Nat. Med.*2007; 13:218-223.

Tsui NB, Akolekar R, Chiu RW, et al. Synergy of total PLAC4 RNA concentration and measurement of the RNA single-nucleotide polymorphism allelic ratio for the noninvasive prenatal detection of trisomy 21. *Clin. Chem.*2010; 56:73-81.

Banzola I, Rusterholz C, Zannoni L, et al. PLAC4 and beta-HCG mRNA levels are not altered in the maternal circulation of pregnancies with trisomy 21. *Prenat. Diagn.*2008; 28:1262-7.