

**FBXL16 Antibody**  
**Catalog # ASC11273****Specification**

---

**FBXL16 Antibody - Product Information**

Application	WB, IHC, IF
Primary Accession	<a href="#">Q8N461</a>
Other Accession	<a href="#">NP_699181</a> , <a href="#">289666746</a>
Reactivity	Human, Mouse, Rat
Host	Rabbit
Clonality	Polyclonal
Isotype	IgG
Application Notes	FBXL16 antibody can be used for detection of FBXL16 by Western blot at 0.5 - 1 µg/mL. Antibody can also be used for immunohistochemistry starting at 5 µg/mL. For immunofluorescence start at 20 µg/mL.

**FBXL16 Antibody - Additional Information**Gene ID **146330****Target/Specificity**

FBXL16; FBXL16 antibody is predicted to not cross-react with other F-box protein family members.

**Reconstitution & Storage**

FBXL16 antibody can be stored at 4°C for three months and -20°C, stable for up to one year. As with all antibodies care should be taken to avoid repeated freeze thaw cycles. Antibodies should not be exposed to prolonged high temperatures.

**Precautions**

FBXL16 Antibody is for research use only and not for use in diagnostic or therapeutic procedures.

**FBXL16 Antibody - Protein Information****Name** FBXL16**Synonyms** C16orf22, FBL16**Function**

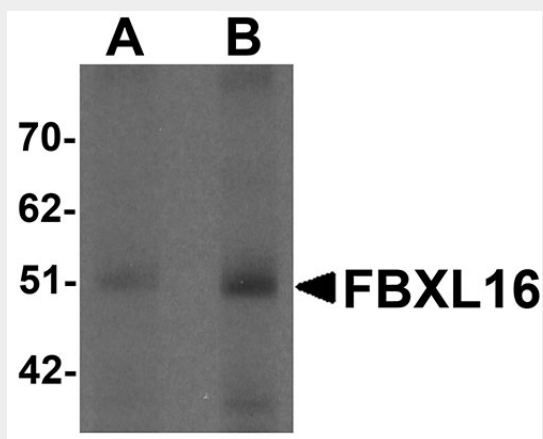
Substrate-recognition component of the SCF (SKP1-CUL1-F-box protein)-type E3 ubiquitin ligase complex.

**FBXL16 Antibody - Protocols**

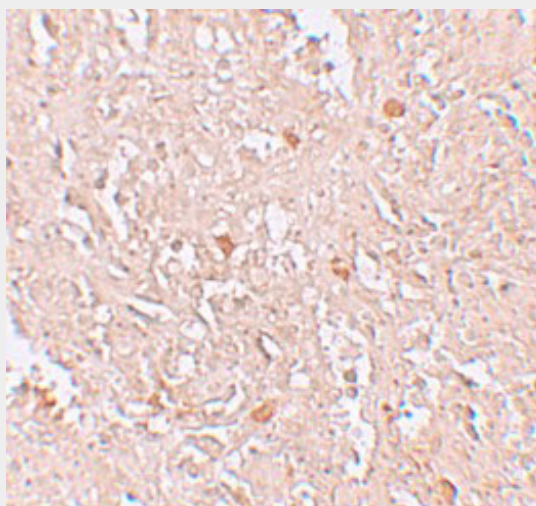
Provided below are standard protocols that you may find useful for product applications.

- [Western Blot](#)
- [Blocking Peptides](#)
- [Dot Blot](#)
- [Immunohistochemistry](#)
- [Immunofluorescence](#)
- [Immunoprecipitation](#)
- [Flow Cytometry](#)
- [Cell Culture](#)

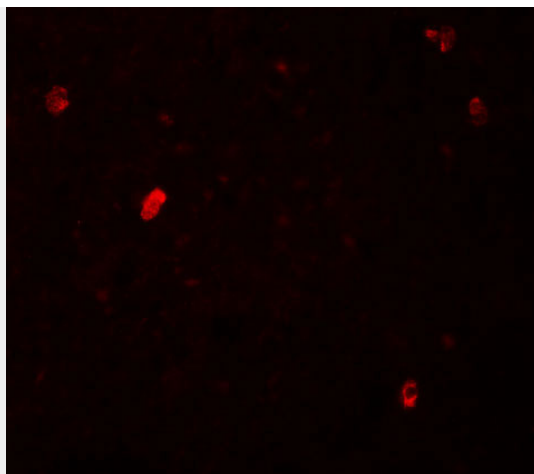
#### FBXL16 Antibody - Images



Western blot analysis of FBXL16 in human spleen tissue lysate with FBXL16 antibody at (A) 0.5 and (B) 1 µg/mL.



Immunohistochemistry of FBXL16 in human spleen tissue with FBXL16 antibody at 5 µg/mL.



Immunofluorescence of FBXL16 in human spleen tissue with FBXL16 antibody at 20 µg/mL.

### **FBXL16 Antibody - Background**

**FBXL16 Antibody:** FBXL16 (F-box and leucine-rich repeat protein 16), a member of the F-box protein family, is a probable substrate-recognition component of the SCF (SKP1-CUL1-F-box protein)-type E3 ubiquitin ligase complex. It is characterized by an approximately 40-amino acid F-box motif. F-box proteins interact with SKP1 through the F-box, and they interact with ubiquitination targets through other protein interaction domains. FBXL16 is a novel E2F1-regulated gene in crucial cell cycle regulation pathways.

### **FBXL16 Antibody - References**

Martin J, Han C, Gordon LA, et al. The sequence and analysis of duplication-rich human chromosome 16. *Nature* 2004; 432:988-94.  
Jin J, Cardozo T, Lovering RC, et al. Systematic analysis and nomenclature of mammalian F-box proteins. *Genes Dev.* 2004; 18:2573-80.  
Sato K, Kusama Y, Tategu M, et al. FBXL16 is a novel E2F1-regulated gene commonly upregulated in p16INK4A- and p14ARF-silenced HeLa cells. *Int. J. Oncol.* 2010; 36:479-90.