

**SLAMF9 Antibody**  
**Catalog # ASC11281****Specification**

---

**SLAMF9 Antibody - Product Information**

Application	WB, IHC, IF
Primary Accession	<a href="#">Q96A28</a>
Other Accession	<a href="#">NP_001139645</a> , <a href="#">226342990</a>
Reactivity	Human, Mouse, Rat
Host	Rabbit
Clonality	Polyclonal
Isotype	IgG
Application Notes	SLAMF9 antibody can be used for detection of SLAMF9 by Western blot at 1 - 2 µg/mL. Antibody can also be used for immunohistochemistry starting at 2.5 µg/mL. For immunofluorescence start at 20 µg/mL.

**SLAMF9 Antibody - Additional Information**Gene ID **89886****Target/Specificity**

SLAMF9; SLAMF9 antibody is predicted to not cross-react with other SLAM protein family members.

**Reconstitution & Storage**

SLAMF9 antibody can be stored at 4°C for three months and -20°C, stable for up to one year. As with all antibodies care should be taken to avoid repeated freeze thaw cycles. Antibodies should not be exposed to prolonged high temperatures.

**Precautions**

SLAMF9 Antibody is for research use only and not for use in diagnostic or therapeutic procedures.

**SLAMF9 Antibody - Protein Information****Name** SLAMF9**Synonyms** CD2F10**Function**

May play a role in the immune response.

**Cellular Location**

Membrane; Single-pass type I membrane protein.

**Tissue Location**

Expression is predominantly restricted in hematopoietic tissues. Expressed in heart, spleen, liver, intestine, muscle and testis. Expressed in immune cells, including monocytes, dendritic, B- and

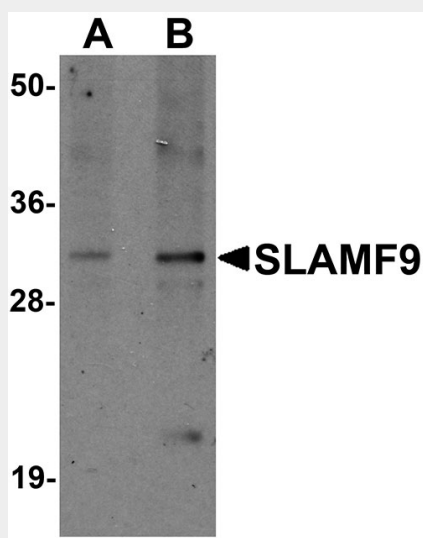
T-cells. No expression was seen in peripheral blood leukocytes. Expressed in the leukocyte cell line THP-1

### SLAMF9 Antibody - Protocols

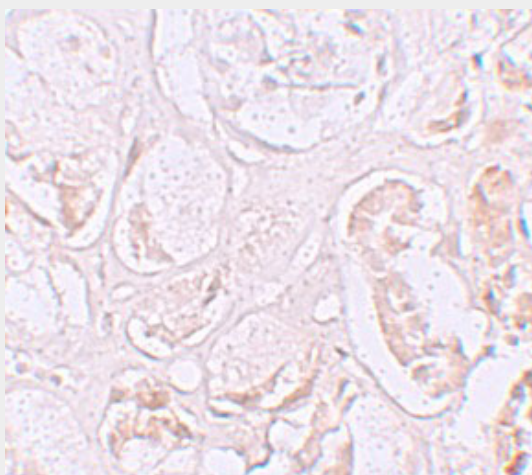
Provided below are standard protocols that you may find useful for product applications.

- [Western Blot](#)
- [Blocking Peptides](#)
- [Dot Blot](#)
- [Immunohistochemistry](#)
- [Immunofluorescence](#)
- [Immunoprecipitation](#)
- [Flow Cytometry](#)
- [Cell Culture](#)

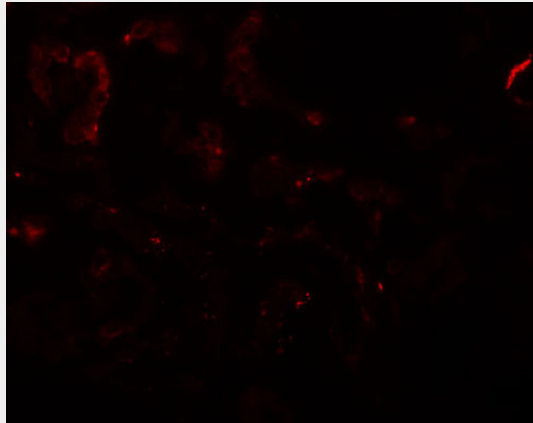
### SLAMF9 Antibody - Images



Western blot analysis of SLAMF9 in mouse kidney tissue lysate with SLAMF9 antibody at (A) 1 and (B) 2  $\mu$ g/mL.



Immunohistochemistry of SLAMF9 in human kidney tissue with SLAMF9 antibody at 2.5  $\mu$ g/mL.



Immunofluorescence of SLAMF9 in human kidney tissue with SLAMF9 antibody at 20 µg/mL.

### **SLAMF9 Antibody - Background**

**SLAMF9 Antibody:** The SLAM (signalling lymphocyte activation molecule) family is a novel group of receptors on T cells in modulating the immune response. SLAMF9, also known as CD2F-10 or CD84 homolog, is a 289 amino acid type I transmembrane protein that shares 58% identity with the mouse protein. The SLAMF9 protein is predominantly expressed in hematopoietic tissues and contains an extracellular region with only two N-linked glycosylation sites, a 20-residue transmembrane region and a highly positively charged 30-residue cytoplasmic tail, suggesting a role for SLAMF9 as an adhesion molecule. SLAMF9 is thought to function in the immune response as a coreceptor for lymphocyte activation.

### **SLAMF9 Antibody - References**

Veillette A and Latour S. The SLAM family of immune-cell receptors. *Curr. Opin. Immunol.* 2003; 15:277-85.

Veillette A. SLAM family receptors regulate immunity with and without SAP-related adaptors. *J. Exp. Med.* 2004; 199:1175-8.

Fennelly JA, Tiwari B, Davis SJ, et al. CD2F-10: a new member of the CD2 subset of the immunoglobulin superfamily. *Immunogenetics* 2001; 53:599-602.

Detre C, Keszei M, Romero X, et al. SLAM family receptors and the SLAM-associated protein (SAP) modulate T cell functions. *Semin. Immunopathol.* 2010; 32:157-71.