

LRRFIP1 Antibody
Catalog # ASC11292**Specification**

LRRFIP1 Antibody - Product Information

Application	WB, IHC, IF
Primary Accession	Q32MZ4
Other Accession	NP_001131022 , 212276096
Reactivity	Human
Host	Rabbit
Clonality	Polyclonal
Isotype	IgG
Application Notes	LRRFIP1 antibody can be used for detection of LRRFIP1 by Western blot at 1 µg/mL. Antibody can also be used for immunohistochemistry starting at 5 µg/mL. For immunofluorescence start at 20 µg/mL.

LRRFIP1 Antibody - Additional InformationGene ID **9208****Target/Specificity**

LRRFIP1; LRRFIP1 antibody is predicted to not cross-react with other LRRFIP family members. Three isoforms of LRRFIP1 are known to exist; this antibody will only recognize the two longer isoforms.

Reconstitution & Storage

LRRFIP1 antibody can be stored at 4°C for three months and -20°C, stable for up to one year. As with all antibodies care should be taken to avoid repeated freeze thaw cycles. Antibodies should not be exposed to prolonged high temperatures.

Precautions

LRRFIP1 Antibody is for research use only and not for use in diagnostic or therapeutic procedures.

LRRFIP1 Antibody - Protein Information**Name** LRRFIP1**Synonyms** GCF2, TRIP**Function**

Transcriptional repressor which preferentially binds to the GC-rich consensus sequence (5'-AGCCCCCGGCG-3') and may regulate expression of TNF, EGFR and PDGFA. May control smooth muscle cells proliferation following artery injury through PDGFA repression. May also bind double-stranded RNA. Positively regulates Toll-like receptor (TLR) signaling in response to agonist probably by competing with the negative FLII regulator for MYD88-binding.

Cellular Location

Nucleus. Cytoplasm.

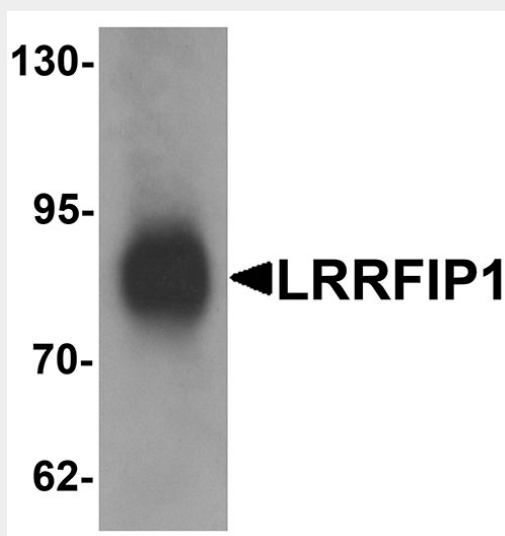
Tissue Location

Ubiquitously expressed.

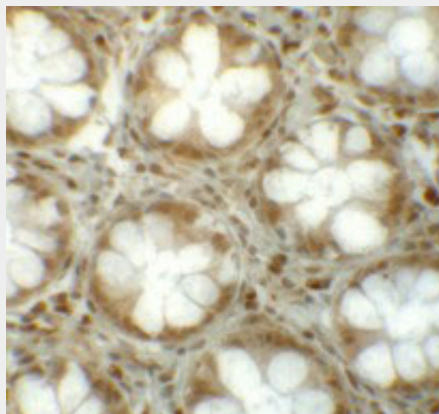
LRRFIP1 Antibody - Protocols

Provided below are standard protocols that you may find useful for product applications.

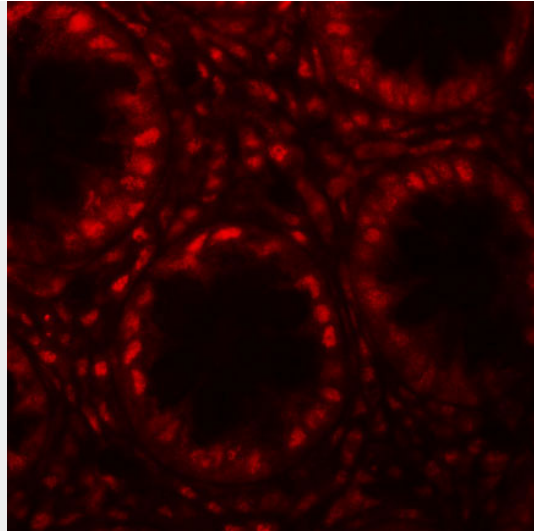
- [Western Blot](#)
- [Blocking Peptides](#)
- [Dot Blot](#)
- [Immunohistochemistry](#)
- [Immunofluorescence](#)
- [Immunoprecipitation](#)
- [Flow Cytometry](#)
- [Cell Culture](#)

LRRFIP1 Antibody - Images

Western blot analysis of LRRFIP1 in human colon tissue lysate with LRRFIP1 antibody at 1 μ g/mL.



Immunohistochemistry of LRRFIP1 in human colon tissue with LRRFIP1 antibody at 5 μ g/mL.



Immunofluorescence of LRRFIP1 in human colon tissue with LRRFIP1 antibody at 20 µg/mL.

LRRFIP1 Antibody - Background

LRRFIP1 Antibody: LRRFIP1, also known as GC-binding factor 2 (GCF2), is a 738 amino acid transcriptional repressor that mainly plays a cytoskeletal role. It is primarily localized in the cytoplasm and preferentially binds to GC-rich dsDNA, but will also bind directly to dsRNA as well. The RNA binding domain encompasses a lysine-rich motif. LRRFIP1 interacts with the mammalian Flightless I (Fli-I) and is a key component in the cytoskeletal regulation of platelet function. LRRFIP1 and the related protein LRRFIP2 may modulate canonical WNT signaling and mediate the IRF3-induced production of type I interferon via a beta-catenin-dependent pathway.

LRRFIP1 Antibody - References

Rikiyama T, Curtis J, Oikawa M, et al. GCF2: expression and molecular analysis of repression. *Biochim. Biophys. Acta* 2003; 1629:15-25.
Suriano AR, Sanford AN, Kim N, et al. GCF2/LRRFIP1 represses tumor necrosis factor α expression. *Mol. Cell. Biol.* 2005; 25:9073-81.
Wilson SA, Brown EC, Kingsman AJ, et al. TRIP: a novel double-stranded RNA binding protein which interacts with the leucine-rich repeat of Flightless I. *Nucleic Acids Res.* 1998; 26:3460-7.
Goodall AH, Burns P, Salles I, et al. Transcription profiling in human platelets reveals LRRFIP1 as a novel protein regulating platelet function. *Blood* 2010; 116:4646-56.