

RABEX5 Antibody
Catalog # ASC11295**Specification**

RABEX5 Antibody - Product Information

Application	WB, IHC, IF
Primary Accession	O9UJ41
Other Accession	NP_055319 , 7657496
Reactivity	Human, Mouse, Rat
Host	Rabbit
Clonality	Polyclonal
Isotype	IgG
Application Notes	RABEX5 antibody can be used for detection of RABEX5 by Western blot at 1 µg/mL. Antibody can also be used for immunohistochemistry starting at 5 µg/mL. For immunofluorescence start at 20 µg/mL.

RABEX5 Antibody - Additional InformationGene ID **27342****Target/Specificity**

RABGEF1; At least four isoforms of RABEX5 are known to exist; this antibody will recognize all four. RABEX5 antibody is predicted to not cross-react with other LRRFIP family members.

Reconstitution & Storage

RABEX5 antibody can be stored at 4°C for three months and -20°C, stable for up to one year. As with all antibodies care should be taken to avoid repeated freeze thaw cycles. Antibodies should not be exposed to prolonged high temperatures.

Precautions

RABEX5 Antibody is for research use only and not for use in diagnostic or therapeutic procedures.

RABEX5 Antibody - Protein Information**Name** RABGEF1**Synonyms** RABEX5**Function**

Rab effector protein acting as linker between gamma-adaptin, RAB4A or RAB5A. Involved in endocytic membrane fusion and membrane trafficking of recycling endosomes. Stimulates nucleotide exchange on RAB5A. Can act as a ubiquitin ligase (By similarity).

Cellular Location

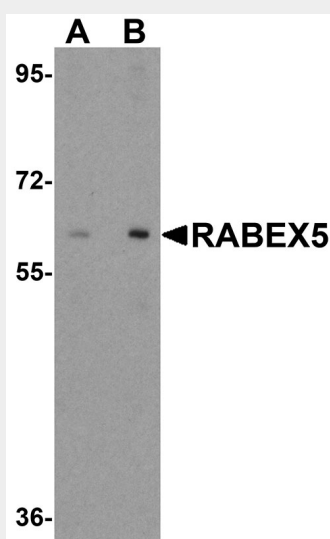
Cytoplasm. Early endosome. Recycling endosome

RABEX5 Antibody - Protocols

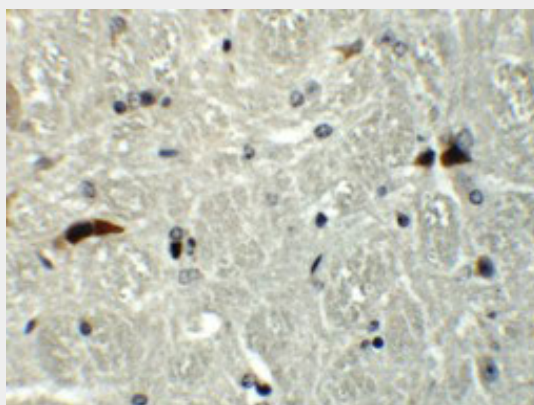
Provided below are standard protocols that you may find useful for product applications.

- [Western Blot](#)
- [Blocking Peptides](#)
- [Dot Blot](#)
- [Immunohistochemistry](#)
- [Immunofluorescence](#)
- [Immunoprecipitation](#)
- [Flow Cytometry](#)
- [Cell Culture](#)

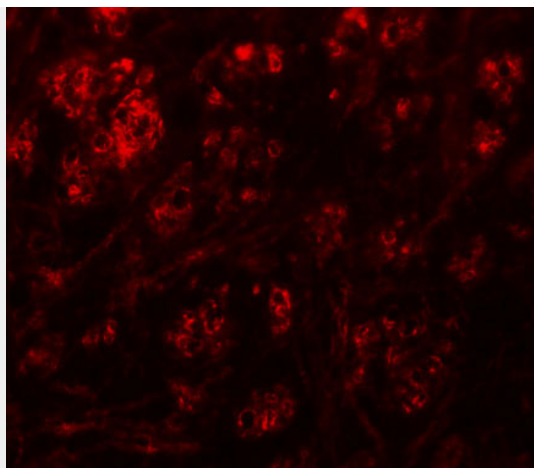
RABEX5 Antibody - Images



Western blot analysis of RABEX5 in human liver tissue lysate with RABEX5 antibody at (A) 1 and (B) 2 μ g/mL.



Immunohistochemistry of RABEX5 in mouse brain tissue with RABEX5 antibody at 5 μ g/mL.



Immunofluorescence of RABEX5 in mouse brain tissue with RABEX5 antibody at 20 µg/mL.

RABEX5 Antibody - Background

RABEX5 Antibody: RABEX5 is a guanine nucleotide exchange factor (GEF) that forms a complex with rabaptin-5 and specifically activates Rab5, a small GTPase that plays an essential role in endocytic traffic. RABEX-5 is thought to also interact with another member of the Rab family, Rab22, which targets RABEX5 to early endosomes, allowing it to activate Rab5 and thereby promote Rab5-mediated endosome fusion.

RABEX5 Antibody - References

Horiuchi H, Lippe R, McBride HM, et al. A novel Rab5 GDP/GTP exchange factor complexed to Rabaptin-5 links nucleotide exchange to effector recruitment and function. *Cell* 1997; 90:1149-59.
Zhu H, Liang Z, and Li G. Rabex-5 is a Rab22 effector and mediates a Rab22-Rab5 signaling cascade in endocytosis. *Mol. Biol. Cell* 2009; 20:4720-9.