

TMEM192 Antibody
Catalog # ASC11296**Specification**

TMEM192 Antibody - Product Information

Application	WB, IHC-P, IF, E
Primary Accession	Q8IY95
Other Accession	NP_001093859 , 154240704
Reactivity	Human, Mouse, Rat
Host	Rabbit
Clonality	Polyclonal
Isotype	IgG
Application Notes	TMEM192 antibody can be used for detection of TMEM192 by Western blot at 0.5 µg/mL. Antibody can also be used for immunohistochemistry starting at 5 µg/mL. For immunofluorescence start at 20 µg/mL.

TMEM192 Antibody - Additional InformationGene ID **201931****Target/Specificity**

TMEM192; At least two isoforms of TMEM192 are known to exist; this antibody will recognize both. TMEM192 antibody is predicted to not cross-react with other TMEM proteins.

Reconstitution & Storage

TMEM192 antibody can be stored at 4°C for three months and -20°C, stable for up to one year. As with all antibodies care should be taken to avoid repeated freeze thaw cycles. Antibodies should not be exposed to prolonged high temperatures.

Precautions

TMEM192 Antibody is for research use only and not for use in diagnostic or therapeutic procedures.

TMEM192 Antibody - Protein Information**Name** TMEM192**Cellular Location**

Lysosome membrane; Multi-pass membrane protein. Late endosome

Tissue Location

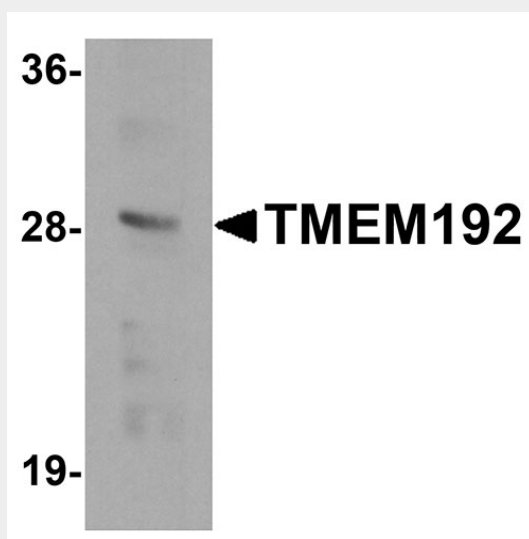
Strongly expressed in kidney, liver, lung and pancreas.

TMEM192 Antibody - Protocols

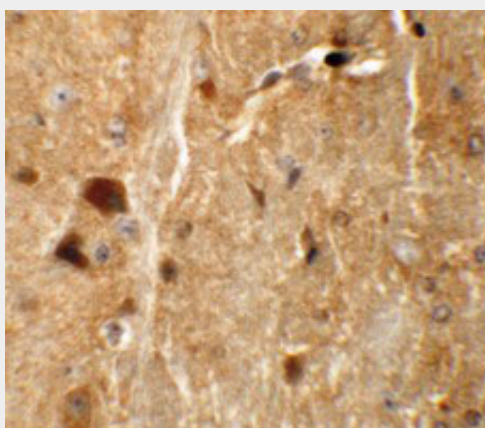
Provided below are standard protocols that you may find useful for product applications.

- [Western Blot](#)
- [Blocking Peptides](#)
- [Dot Blot](#)
- [Immunohistochemistry](#)
- [Immunofluorescence](#)
- [Immunoprecipitation](#)
- [Flow Cytometry](#)
- [Cell Culture](#)

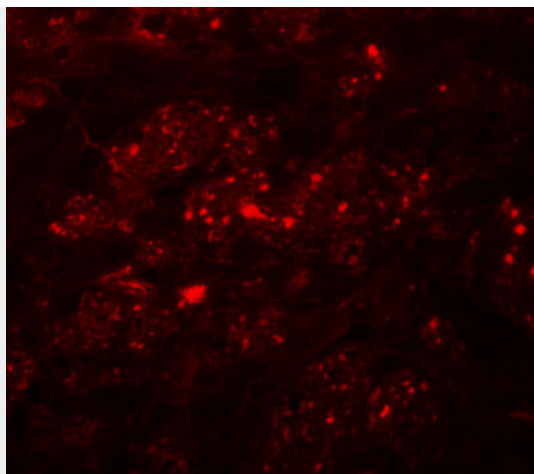
TMEM192 Antibody - Images



Western blot analysis of TMEM192 in SK-N-SH cell lysate with TMEM192 antibody at 0.5 µg/mL.



Immunohistochemistry of TMEM192 in mouse brain tissue with TMEM192 antibody at 5 µg/mL.



Immunofluorescence of TMEM192 in mouse brain tissue with TMEM192 antibody at 20 µg/mL.

TMEM192 Antibody - Background

TMEM192 Antibody: TMEM192 is a widely expressed, four transmembrane protein that localizes to late endosomal/lysosomal membranes. This localization is mediated by two dileucine motifs present at the amino-terminus of TMEM192. A cysteine residue near the carboxy residue is responsible for disulfide bond formation in TMEM192 homodimers. Little is known about the function of this protein.

TMEM192 Antibody - References

Schroder B, Wrocklage C, Hasilik A, et al. Molecular characterisation of 'transmembrane protein 192'(TMEM192, a novel protein of the lysosomal membrane. Biol. Chem. 2010; 391:695-704.
Zhu H, Liang Z, and Li G. Rabex-5 is a Rab22 effector and mediates a Rab22-Rab5 signaling cascade in endocytosis. Mol. Biol. Cell 2009; 20:4720-9.