

SYTL5 Antibody
Catalog # ASC11352**Specification**

SYTL5 Antibody - Product Information

Application	WB, IHC-P, E
Primary Accession	Q8TDW5
Other Accession	NP_620135 , 254039650
Reactivity	Human, Mouse, Rat
Host	Rabbit
Clonality	Polyclonal
Isotype	IgG
Application Notes	SYTL5 antibody can be used for detection of SYTL5 by Western blot at 1 - 2 µg/mL. Antibody can also be used for immunohistochemistry starting at 5 µg/mL.

SYTL5 Antibody - Additional InformationGene ID **94122****Target/Specificity**

SYTL5; Multiple isoforms of SYTL5 are known to exist. SYTL5 antibody is predicted to not cross-react with other SYTL protein family members.

Reconstitution & Storage

SYTL5 antibody can be stored at 4°C for three months and -20°C, stable for up to one year. As with all antibodies care should be taken to avoid repeated freeze thaw cycles. Antibodies should not be exposed to prolonged high temperatures.

Precautions

SYTL5 Antibody is for research use only and not for use in diagnostic or therapeutic procedures.

SYTL5 Antibody - Protein Information**Name** SYTL5**Synonyms** SLP5**Function**

May act as Rab effector protein and play a role in vesicle trafficking. Binds phospholipids.

Cellular Location

Membrane; Peripheral membrane protein

Tissue Location

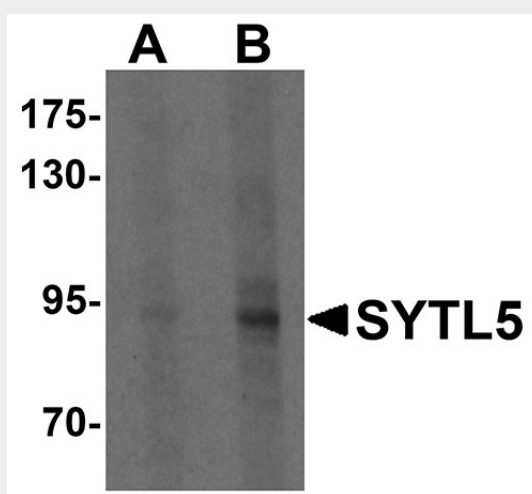
Highly expressed in placenta and liver.

SYTL5 Antibody - Protocols

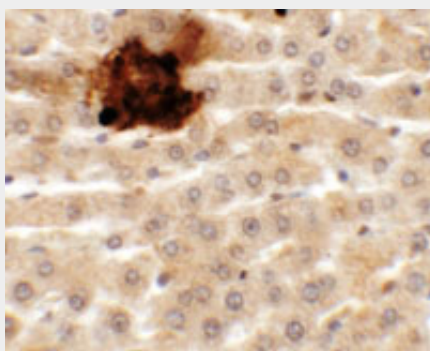
Provided below are standard protocols that you may find useful for product applications.

- [Western Blot](#)
- [Blocking Peptides](#)
- [Dot Blot](#)
- [Immunohistochemistry](#)
- [Immunofluorescence](#)
- [Immunoprecipitation](#)
- [Flow Cytometry](#)
- [Cell Culture](#)

SYTL5 Antibody - Images



Western blot analysis of SYTL5 in Hela cell lysate with SYTL5 antibody at (A) 1 and (B) 2 μ g/mL .



Immunohistochemistry of SYTL2 in rat liver tissue with SYTL2 antibody at 5 μ g/mL.

SYTL5 Antibody - Background

SYTL5 Antibody: SYTL5 belongs to the synaptotagmin-like (Slp) protein family, which contains a unique Slp homolog domain (SHD) at the N-terminus. The SHD functions as a binding site for Rab27A, which plays a role in protein transport. Expression of SYTL5 is restricted to placenta and liver, suggesting that it might be involved in Rab27A-dependent membrane trafficking in specific tissues. Several members of the synaptotagmin family are calcium-sensing vesicle-fusion proteins as mediators of cell migration. SYTL7 & SYTL5 were positive regulators of chemotaxis, whereas SYTL2 was a negative regulator of chemotaxis.

SYTL5 Antibody - References

- Kuroda TS, Fukuda M, Ariga H, et al. Synaptotagmin-like protein 5: a novel Rab27A effector with C-terminal tandem C2 domains. *Biochem. Biophys. Res. Commun.* 2002; 293:899-906.
- Saxena SK, Horiuchi H, and Fukuda M. Rab27a regulates epithelial sodium channel (ENaC) activity through synaptotagmin-like protein (SLP-5) and Munc13-4 effector mechanism. *Biochem. Biophys. Res. Commun.* 2006; 344:651-7.
- Colvin RA, Means TK, Diefenbach TJ, et al. Synaptotagmin-mediated vesicle fusion regulates cell migration. *Nat. Immunol.* 2010; 11:495-502
- Fukuda M, Mikoshiba K. Synaptotagmin-like protein 1-3: a novel family of C-terminal-type tandem C2 proteins. *Biochem. Biophys. Res. Commun.* 2001; 281:1226-33.