

**TMEM204 Antibody**  
**Catalog # ASC11353****Specification**

---

**TMEM204 Antibody - Product Information**

Application	WB, IHC, IF
Primary Accession	<a href="#">Q9BSN7</a>
Other Accession	<a href="#">NP_078876</a> , <a href="#">112807182</a>
Reactivity	Human, Mouse, Rat
Host	Rabbit
Clonality	Polyclonal
Isotype	IgG
Application Notes	TMEM204 antibody can be used for detection of TMEM204 by Western blot at 1 µg/mL. Antibody can also be used for immunohistochemistry starting at 5 µg/mL. For immunofluorescence start at 20 µg/mL.

**TMEM204 Antibody - Additional Information**Gene ID **79652****Target/Specificity**

TMEM204; At least two isoforms of TMEM204 are known to exist; this antibody will recognize both isoforms.

**Reconstitution & Storage**

TMEM204 antibody can be stored at 4°C for three months and -20°C, stable for up to one year. As with all antibodies care should be taken to avoid repeated freeze thaw cycles. Antibodies should not be exposed to prolonged high temperatures.

**Precautions**

TMEM204 Antibody is for research use only and not for use in diagnostic or therapeutic procedures.

**TMEM204 Antibody - Protein Information****Name** TMEM204**Synonyms** C16orf30, CLP24**Function**

Can influence paracellular permeability. Appears to be involved in cell-cell interactions through adherens.

**Cellular Location**

Cell junction, adherens junction. Cell membrane; Multi-pass membrane protein. Note=Colocalizes with the beta-catenin adherins

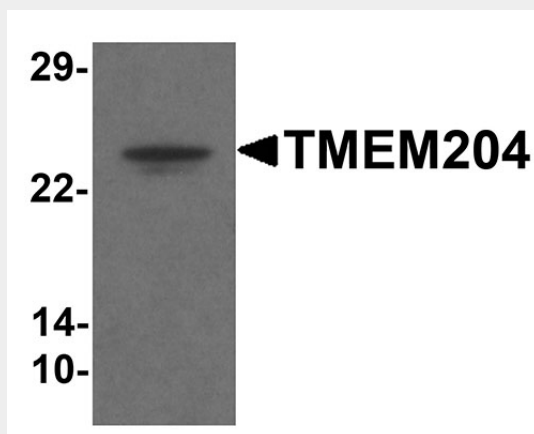
**Tissue Location**

Highly expressed in lung, heart, kidney and placenta. Lower expression in thymus, spleen, liver, testis and ovary Expressed in endothelial and restricted epithelial cell populations

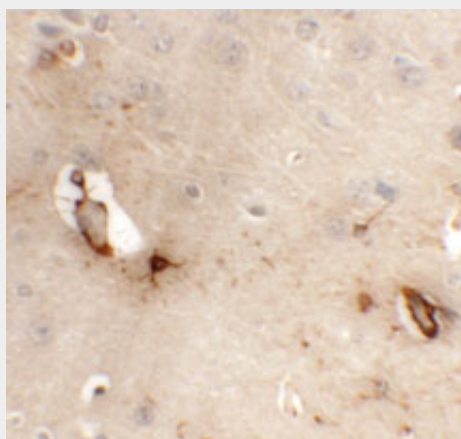
**TMEM204 Antibody - Protocols**

Provided below are standard protocols that you may find useful for product applications.

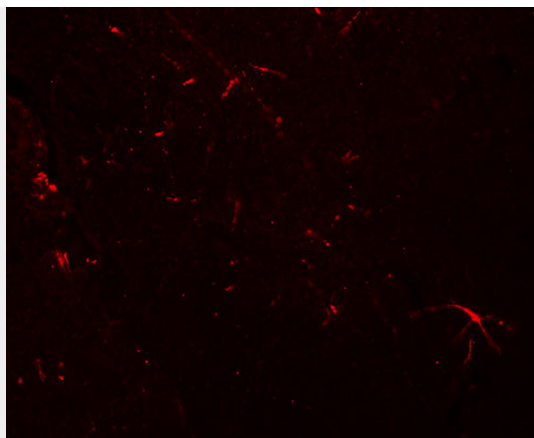
- [Western Blot](#)
- [Blocking Peptides](#)
- [Dot Blot](#)
- [Immunohistochemistry](#)
- [Immunofluorescence](#)
- [Immunoprecipitation](#)
- [Flow Cytometry](#)
- [Cell Culture](#)

**TMEM204 Antibody - Images**

Western blot analysis of TMEM204 in human brain tissue lysate with TMEM204 antibody at 1  $\mu$ g/mL .



Immunohistochemistry of TMEM204 in mouse brain tissue with TMEM204 antibody at 5  $\mu$ g/mL.



Immunofluorescence of TMEM204 in mouse brain tissue with TMEM204 antibody at 20 µg/mL.

#### **TMEM204 Antibody - Background**

TMEM204 Antibody: Transmembrane protein 204 (TMEM204) is a four-transmembrane protein that is induced under hypoxic conditions. It localizes to cell-cell junctions and co-localizes with the beta-catenin adherens junction-associated protein, but not with tight junctions. Overexpression of TMEM204 results in decreased adhesion between cells, indicating that TMEM204 is an adherens junction protein that modulates cell adhesion and potentially angiogenesis. Recent evidence suggests TMEM204 may also be involved in epilepsy.

#### **TMEM204 Antibody - References**

Kearsey J, Petit S, De Oliveira C, et al. A novel four transmembrane spanning protein, CLP24. Eur. J. Biochem. 204; 271:2584-92.  
Stefaniuk M and Lukasiuk K. Cloning of expressed sequence tags (ESTs) representing putative epileptogenesis-related genes and the localization of their expression in the normal brain. Neurosci. Lett. 2010; 482:230-4