

UHRF1BP1L Antibody
Catalog # ASC11368**Specification**

UHRF1BP1L Antibody - Product Information

Application	WB, IHC, IF
Primary Accession	A0JNW5
Other Accession	NP_055869 , 55749644
Reactivity	Human, Mouse
Host	Rabbit
Clonality	Polyclonal
Isotype	IgG
Application Notes	UHRF1BP1L antibody can be used for detection of UHRF1BP1L by Western blot at 1 µg/mL. Antibody can also be used for immunohistochemistry starting at 2.5 µg/mL. For immunofluorescence start at 20 µg/mL.

UHRF1BP1L Antibody - Additional InformationGene ID **23074****Target/Specificity**

UHRF1BP1L; At least two isoforms of UHRF1BP1L are known to exist; this antibody will recognize both isoforms. UHRF1BP1L antibody is predicted to not cross-react with UHRF1BP1

Reconstitution & Storage

UHRF1BP1L antibody can be stored at 4°C for three months and -20°C, stable for up to one year. As with all antibodies care should be taken to avoid repeated freeze thaw cycles. Antibodies should not be exposed to prolonged high temperatures.

Precautions

UHRF1BP1L Antibody is for research use only and not for use in diagnostic or therapeutic procedures.

UHRF1BP1L Antibody - Protein InformationName BLTP3B ([HGNC:29102](#))**Function**

Tube-forming lipid transport protein which mediates the transfer of lipids between membranes at organelle contact sites (PubMed: [35499567](http://www.uniprot.org/citations/35499567)). Required for retrograde traffic of vesicle clusters in the early endocytic pathway to the Golgi complex (PubMed: [35499567](http://www.uniprot.org/citations/35499567), PubMed: [20163565](http://www.uniprot.org/citations/20163565)).

Cellular Location

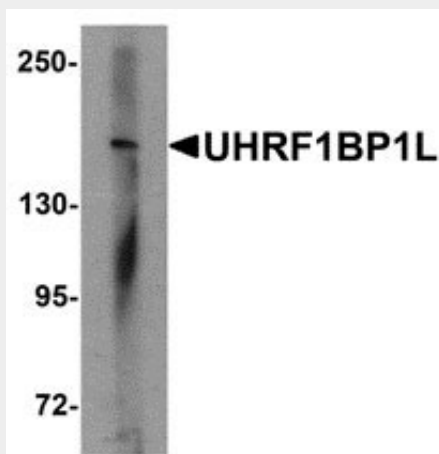
Cytoplasm, cytosol. Early endosome. Note=Localizes on a subpopulation of vesicle clusters in the early endocytic pathway

UHRF1BP1L Antibody - Protocols

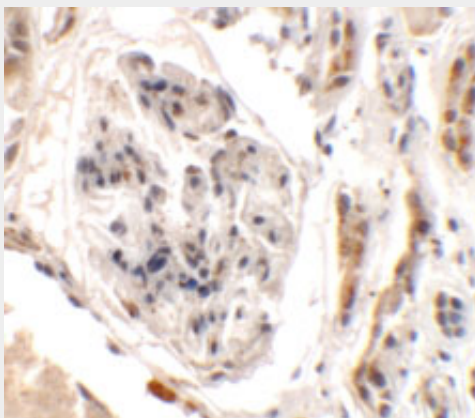
Provided below are standard protocols that you may find useful for product applications.

- [Western Blot](#)
- [Blocking Peptides](#)
- [Dot Blot](#)
- [Immunohistochemistry](#)
- [Immunofluorescence](#)
- [Immunoprecipitation](#)
- [Flow Cytometry](#)
- [Cell Culture](#)

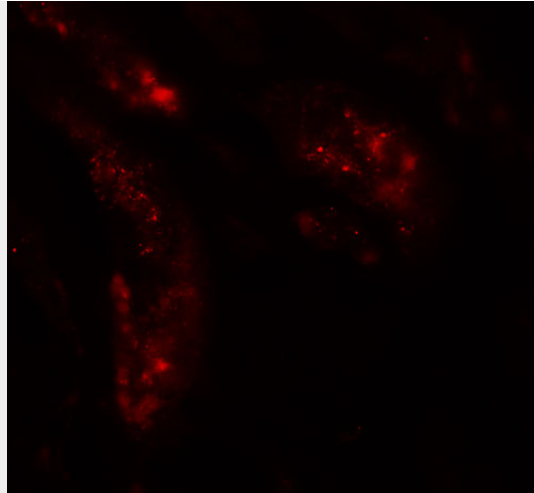
UHRF1BP1L Antibody - Images



Western blot analysis of UHRF1BP1L in mouse brain tissue lysate with UHRF1BP1L antibody at 1 $\mu\text{g/mL}$



Immunohistochemistry of UHRF1BP1L in human kidney tissue with UHRF1BP1L antibody at 2.5 $\mu\text{g/mL}$.



Immunofluorescence of UHRF1BP1L in human kidney tissue with UHRF1BP1L antibody at 20 $\mu\text{g/mL}$.

UHRF1BP1L Antibody - Background

UHRF1BP1L Antibody: The Ubiquitin-like containing PHD and RING finger domains 1-binding protein 1-like (UHRF1BP1L) is closely related to UHRF1BP1, also known as ICBP90, a transcription and cell cycle regulator that specifically binds to the histone H3 N-terminal tail. While little is known of UHRF1BP1L, UHRF1BP1 is required for proper heterochromatin formation in mammalian cells. Furthermore, UHRF1BP1 is thought to be a pivotal target for the ERK1/2 signaling pathway to control the proliferation of Jurkat T cells, suggesting that UHRF1BP1L may also be involved in chromatin regulation and cell proliferation.

UHRF1BP1L Antibody - References

Hopfner R, Mousli M, Jeltsch JM, et al. ICBP90, a novel human CCAAT binding protein, involved in the regulation of Topoisomerase II α expression. *Cancer Res.* 2000; 60:121-8
Unoki M, Nishidate T and Nakamura Y. ICBP90, an E2F-1 target, recruits HDAC1 and binds to methyl-CpG through its SRA domain. *Oncogene* 2004; 23:7601-10
Karagianni P, Amazit L, Qin J, et al. ICBP90, a novel methyl K9 H3 binding protein linking protein ubiquitination with heterochromatin formation. *Mol. Cell Biol.* 2008; 28:705-17
Fang Z, Xing F, Bronner C, et al. ICBP90 mediates the ERK1/2 signaling to regulate the proliferation of Jurkat T cells. *Cell Immunol.* 2009; 257:80-7