

RILPL1 Antibody
Catalog # ASC11378**Specification****RILPL1 Antibody - Product Information**

Application	WB, IF
Primary Accession	Q5EBL4
Other Accession	AAH89444 , 195947382
Reactivity	Human, Mouse, Rat
Host	Rabbit
Clonality	Polyclonal
Isotype	IgG
Application Notes	RILPL1 antibody can be used for detection of RILPL1 by Western blot at 0.5 and 1 µg/mL. Antibody can also be used for immunofluorescence starting at 20 µg/mL. For immunofluorescence start at 20 µg/mL.

RILPL1 Antibody - Additional InformationGene ID **353116****Target/Specificity**

RILPL1; At least three isoforms of RILPL1 are known to exist; this antibody will detect the two shorter isoforms. RILPL1 antibody is predicted to not cross-react with RILP.

Reconstitution & Storage

RILPL1 antibody can be stored at 4°C for three months and -20°C, stable for up to one year. As with all antibodies care should be taken to avoid repeated freeze thaw cycles. Antibodies should not be exposed to prolonged high temperatures.

Precautions

RILPL1 Antibody is for research use only and not for use in diagnostic or therapeutic procedures.

RILPL1 Antibody - Protein Information**Name** RILPL1**Synonyms** RLP1**Function**

Plays a role in the regulation of cell shape and polarity (By similarity). Plays a role in cellular protein transport, including protein transport away from primary cilia (By similarity). Neuroprotective protein, which acts by sequestering GAPDH in the cytosol and prevent the apoptotic function of GAPDH in the nucleus (By similarity). Competes with SIAH1 for binding GAPDH (By similarity). Does not regulate lysosomal morphology and distribution (PubMed:14668488). Binds to RAB10 following LRRK2-mediated RAB10 phosphorylation which leads to inhibition of ciliogenesis (PubMed:30398148).

Cellular Location

Cytoplasm, cytosol. Cytoplasm, cytoskeleton, microtubule organizing center, centrosome, centriole
Cytoplasm, cytoskeleton, cilium basal body

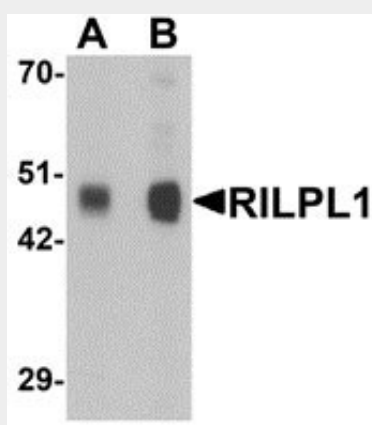
Tissue Location

Widely expressed. Expressed at lower level in liver and kidney.

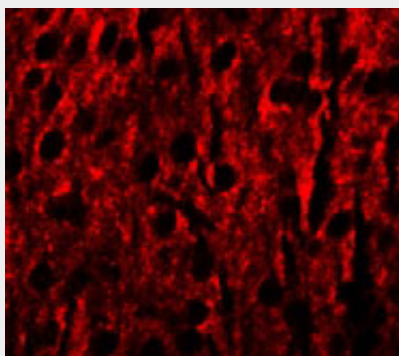
RILPL1 Antibody - Protocols

Provided below are standard protocols that you may find useful for product applications.

- [Western Blot](#)
- [Blocking Peptides](#)
- [Dot Blot](#)
- [Immunohistochemistry](#)
- [Immunofluorescence](#)
- [Immunoprecipitation](#)
- [Flow Cytometry](#)
- [Cell Culture](#)

RILPL1 Antibody - Images

Western blot analysis of RILPL1 in rat cerebellum tissue lysate with RILPL1 antibody at (A) 0.5 and (B) 1 µg/mL.



Immunofluorescence of RILPL1 in mouse brain cells with RILPL1 antibody at 20 µg/mL.

RILPL1 Antibody - Background

RILPL1 Antibody: While the function of the Rab interacting lysosomal protein-like 1 (RILPL1) remains unknown, the homologous protein RILP is a small GTPase that controls transport to endocytic compartments, suggesting RILPL1 may have similar functions. However, overexpression of RILP caused enlarged lysosomes that are more centrally located in the cell, while overexpression of RILPL1 had no visible effect on the location or morphology of lysosomes.

RILPL1 Antibody - References

Cantalupo G, Alifano P, Roberti V, et al. Rab-interacting lysosomal protein (RILP): the Rab7 effector required for transport to lysosomes. EMBO J. 2001; 20:683-93

Wang T, Wong KK, and Hong W. A unique region of RILP distinguishes it from its related proteins in its regulation of lysosomal morphology and interaction with Rab7 and Rab34. Mol. Biol. Cell 2004; 15:815-26