

Strumpellin Antibody
Catalog # ASC11379**Specification**

Strumpellin Antibody - Product Information

Application	WB
Primary Accession	Q12768
Other Accession	NP_055661 , 120952851
Reactivity	Human, Mouse, Rat
Host	Rabbit
Clonality	Polyclonal
Isotype	IgG
Application Notes	Strumpellin antibody can be used for detection of Strumpellin by Western blot at 1 µg/mL.

Strumpellin Antibody - Additional InformationGene ID **9897****Target/Specificity**

KIAA0196; Multiple isoforms of Strumpellin are known to exist.

Reconstitution & Storage

Strumpellin antibody can be stored at 4°C for three months and -20°C, stable for up to one year. As with all antibodies care should be taken to avoid repeated freeze thaw cycles. Antibodies should not be exposed to prolonged high temperatures.

Precautions

Strumpellin Antibody is for research use only and not for use in diagnostic or therapeutic procedures.

Strumpellin Antibody - Protein InformationName WASHC5 ([HGNC:28984](#))

Synonyms KIAA0196

Function

Acts as a component of the WASH core complex that functions as a nucleation-promoting factor (NPF) at the surface of endosomes, where it recruits and activates the Arp2/3 complex to induce actin polymerization, playing a key role in the fission of tubules that serve as transport intermediates during endosome sorting (PubMed:[19922875](http://www.uniprot.org/citations/19922875), PubMed:[20498093](http://www.uniprot.org/citations/20498093)). May be involved in axonal outgrowth. Involved in cellular localization of ADRB2 (PubMed:[23085491](http://www.uniprot.org/citations/23085491)). Involved in cellular trafficking of BLOC-1 complex cargos such as ATP7A and VAMP7 (PubMed:[23676666](http://www.uniprot.org/citations/23676666)).

Cellular Location

Cytoplasm, cytosol. Endoplasmic reticulum. Early endosome Note=Colocalizes with SYP/synaptophysin in the external molecular layer of the dentate gyrus and in motoneurons of the ventral horn of spinal cord.

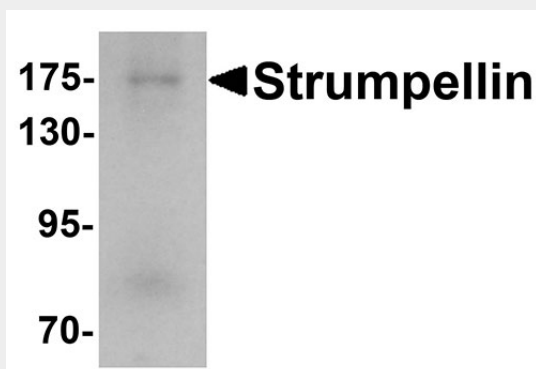
Tissue Location

Expressed ubiquitously.

Strumpellin Antibody - Protocols

Provided below are standard protocols that you may find useful for product applications.

- [Western Blot](#)
- [Blocking Peptides](#)
- [Dot Blot](#)
- [Immunohistochemistry](#)
- [Immunofluorescence](#)
- [Immunoprecipitation](#)
- [Flow Cytometry](#)
- [Cell Culture](#)

Strumpellin Antibody - Images

Western blot analysis of Strumpellin in human ovary tissue lysate with Strumpellin antibody at 1 µg/mL.

Strumpellin Antibody - Background

Strumpellin Antibody: Strumpellin is a ubiquitously expressed, multi-transmembrane and spectrin-repeat-containing protein. It is named for Strumpell disease; a progressive upper-motor neurodegenerative disease termed hereditary spastic paraplegia (HSP). The Strumpellin gene maps to the eighth HSP locus (SPG8) on chromosome 8p24.13. Three families linked to this locus have mutations in the Strumpellin gene; rescue studies of zebrafish with decreased Strumpellin expression with Strumpellin mRNA containing these mutations showed impaired normal function of this protein. Recent studies suggest that Strumpellin may also be involved in protein aggregation diseases.

Strumpellin Antibody - References

Valmanis PN, Meijer IA, Reynolds A, et al. Mutations in the KIAA0196 gene at the SPG8 locus cause hereditary spastic paraplegia. *Am. J. Hum. Gen.* 2007; 80:152-61.
Clemen CS, Tangavelou K, Strucksberg KH, et al. Strumpellin is a novel valosin-containing protein

binding partner linking hereditary spastic paraplegia to protein aggregation diseases. Brain 2010; 133:2920-41