

**ECRG1 Antibody**  
**Catalog # ASC11385****Specification**

---

**ECRG1 Antibody - Product Information**

Application	WB
Primary Accession	<a href="#">Q6ZMR5</a>
Other Accession	<a href="#">Q6ZMR5</a> , <a href="#">167466250</a>
Reactivity	Human, Mouse, Rat
Host	Chicken
Clonality	Polyclonal
Isotype	IgY
Application Notes	ECRG1 antibody can be used for detection of ECRG1 by Western blot at 1 µg/mL.

**ECRG1 Antibody - Additional Information**Gene ID **339967****Target/Specificity**

TPRSS11A; At least two isoforms of ECRG1 are known to exist; ECRG1 antibody is predicted to not cross-react with other ECRG family members.

**Reconstitution & Storage**

ECRG1 antibody can be stored at 4°C for three months and -20°C, stable for up to one year. As with all antibodies care should be taken to avoid repeated freeze thaw cycles. Antibodies should not be exposed to prolonged high temperatures.

**Precautions**

ECRG1 Antibody is for research use only and not for use in diagnostic or therapeutic procedures.

**ECRG1 Antibody - Protein Information****Name** TPRS11A**Synonyms** ECRG1, HATL1, HESP**Function**

Probable serine protease which may play a role in cellular senescence. Overexpression inhibits cell growth and induce G1 cell cycle arrest.

**Cellular Location**

Membrane; Single-pass type II membrane protein

**Tissue Location**

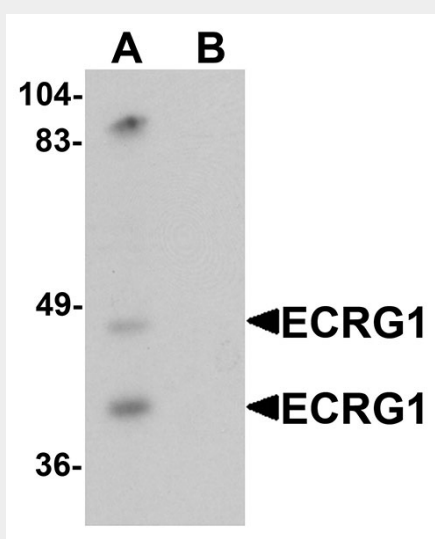
Expressed in esophagus, liver, colon and lung. Down-regulated in esophagus cancers.

## ECRG1 Antibody - Protocols

Provided below are standard protocols that you may find useful for product applications.

- [Western Blot](#)
- [Blocking Peptides](#)
- [Dot Blot](#)
- [Immunohistochemistry](#)
- [Immunofluorescence](#)
- [Immunoprecipitation](#)
- [Flow Cytometry](#)
- [Cell Culture](#)

## ECRG1 Antibody - Images



Western blot analysis of ECRG1 in mouse liver tissue lysate with ECRG1 antibody at 1  $\mu$ g/mL in (A) the absence and (B) the presence of blocking peptide.

## ECRG1 Antibody - Background

ECRG1 Antibody: Epidermal type-II transmembrane serine protease (ECRG1), also known as TMPRSS11A, is a member of a novel esophageal cancer-related gene family. It is a type-II transmembrane serine protease which may play a role in cellular senescence. It is expressed in esophagus, liver, colon and lung. Overexpression of ECRG1 inhibits cell growth and induces G1 cell cycle arrest. It is down-regulated in esophagus cancers (EC) and might play important roles in the initiation and progression of EC.

## ECRG1 Antibody - References

Yueying W, Jianbo W, Hailin L, et al. ECRG1, a novel esophageal gene, cloned and identified from human esophagus and its inhibition effect on tumors. *Carcinogenesis* 2008; 29:157-60.  
Zhao N, Wang J, Cui Y, et al. Induction of G1 cell cycle arrest and P15INK4b expression by ECRG1 through interaction with Miz-1. *J. Cell Biochem.* 2004; 92:65-76  
Zhao N, Huang G, Guo L, et al. ECRG1, a novel candidate of tumor suppressor gene in the esophageal carcinoma, triggers a senescent program in NIH3T3 cells. *Exp. Biol. Med.* 2006; 231:84-90.