

**RASSF6 Antibody**  
**Catalog # ASC11390****Specification**

---

**RASSF6 Antibody - Product Information**

Application	WB, E
Primary Accession	<a href="#">Q6ZTQ3</a>
Other Accession	<a href="#">NP_803876</a> , <a href="#">41393610</a>
Reactivity	Human
Host	Rabbit
Clonality	Polyclonal
Isotype	IgG
Application Notes	RASSF6 antibody can be used for detection of RASSF6 by Western blot at 1 µg/mL.

**RASSF6 Antibody - Additional Information**

Gene ID **166824**

**Target/Specificity**

RASSF6; At least four isoforms of RASSF6 are known to exist. RASSF6 antibody is predicted to not cross-react with other RASSF family members.

**Reconstitution & Storage**

RASSF6 antibody can be stored at 4°C for three months and -20°C, stable for up to one year. As with all antibodies care should be taken to avoid repeated freeze thaw cycles. Antibodies should not be exposed to prolonged high temperatures.

**Precautions**

RASSF6 Antibody is for research use only and not for use in diagnostic or therapeutic procedures.

**RASSF6 Antibody - Protein Information**

**Name** RASSF6

**Function**

Involved in the induction of apoptosis, through both caspase- dependent and caspase-independent pathways. May act as a Ras effector protein. May suppress the serum-induced basal levels of NF-kappa-B (By similarity).

**Tissue Location**

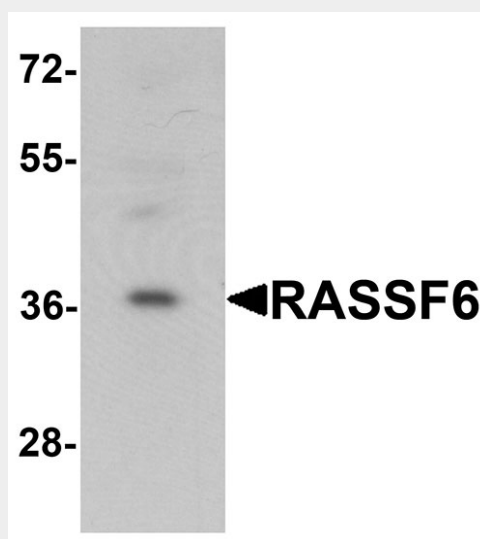
Highest expression in thymus, kidney and placenta. Also detected in colon, small intestine and lung. Tends to be down- regulated in 30-60% of tumors derived from breast, colon, kidney liver, rectum, pancreas, stomach and the thyroid gland compared to the normal counterpart.

**RASSF6 Antibody - Protocols**

Provided below are standard protocols that you may find useful for product applications.

- [Western Blot](#)
- [Blocking Peptides](#)
- [Dot Blot](#)
- [Immunohistochemistry](#)
- [Immunofluorescence](#)
- [Immunoprecipitation](#)
- [Flow Cytometry](#)
- [Cell Culture](#)

#### **RASSF6 Antibody - Images**



Western blot analysis of RASSF6 in 293 cell lysate with RASSF6 antibody at 1 µg/mL.

#### **RASSF6 Antibody - Background**

RASSF6 Antibody: RASSF family proteins are tumor suppressors that are frequently downregulated during the development of human cancer. RASSF6 (Ras association (RalGDS/AF-6) domain family member 6), a member of RASSF family, acts as a Ras effector protein / tumor suppressor. RASSF6 contains one Ras-associating domain and one SARAH domain. It is involved in the induction of apoptosis, through both caspase-dependent and caspase-independent pathways. Defects in RASSF6 may facilitate viral NFκ-B pathway and may play a vital role in infection.

#### **RASSF6 Antibody - References**

Van der Weyden L, Adams DJ. The Ras-association domain family (RASSF) members and their role in human tumourigenesis. *Biochim. Biophys. Acta* 2007; 1776:58-85  
Allen NP, Donninger H, Vos MD, et al. RASSF6 is a novel member of the RASSF family of tumor suppressors. *Oncogene* 2007; 26:6203-11  
Ikeda M, Hirabayashi S, Fujiwara N, et al. Ras-association domain family protein 6 induces apoptosis via both caspase-dependent and caspase-independent pathways. *Exp. Cell Res.* 2007; 313:1484-95