

MS4A6A Antibody
Catalog # ASC11403**Specification**

MS4A6A Antibody - Product Information

Application	WB, IHC, IF
Primary Accession	Q9H2W1
Other Accession	NP_071744 , 23238238
Reactivity	Human, Mouse, Rat
Host	Rabbit
Clonality	Polyclonal
Isotype	IgG
Application Notes	MS4A6A antibody can be used for detection of MS4A6A by Western blot at 1 - 2 µg/mL. Antibody can also be used for immunohistochemistry starting at 2.5 µg/mL. For immunofluorescence start at 20 µg/mL.

MS4A6A Antibody - Additional InformationGene ID **64231****Target/Specificity**

MS4A6A; At least three isoforms of MS4A6A are known to exist; this antibody will detect the two longer isoforms. MS4A6A antibody is predicted to not cross-react with MS4A family members.

Reconstitution & Storage

MS4A6A antibody can be stored at 4°C for three months and -20°C, stable for up to one year. As with all antibodies care should be taken to avoid repeated freeze thaw cycles. Antibodies should not be exposed to prolonged high temperatures.

Precautions

MS4A6A Antibody is for research use only and not for use in diagnostic or therapeutic procedures.

MS4A6A Antibody - Protein Information**Name** MS4A6A**Synonyms** 4SPAN3, CD20L3, MS4A6**Function**

May be involved in signal transduction as a component of a multimeric receptor complex.

Cellular Location

Membrane; Multi-pass membrane protein.

Tissue Location

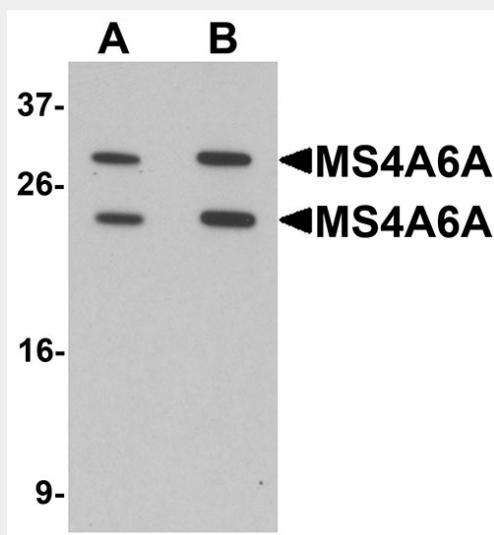
Variable expression in some B-cell, myelomonocytic, and erythroleukemia cell lines

MS4A6A Antibody - Protocols

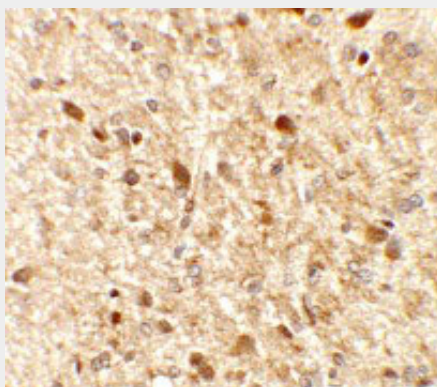
Provided below are standard protocols that you may find useful for product applications.

- [Western Blot](#)
- [Blocking Peptides](#)
- [Dot Blot](#)
- [Immunohistochemistry](#)
- [Immunofluorescence](#)
- [Immunoprecipitation](#)
- [Flow Cytometry](#)
- [Cell Culture](#)

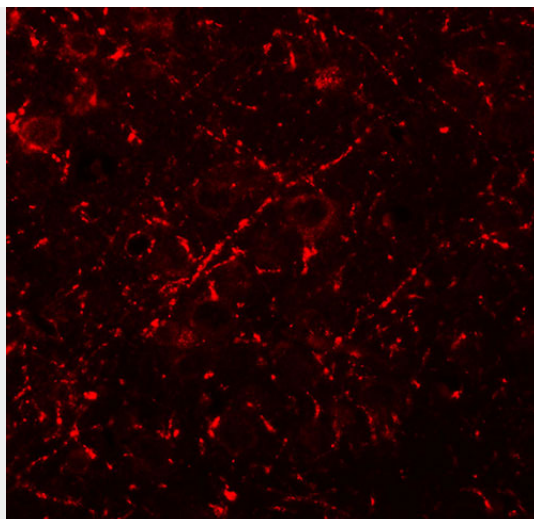
MS4A6A Antibody - Images



Western blot analysis of MS4A6A in 293 cell lysate with MS4A6A antibody at (A) 1 and (B) 2 µg/mL.



Immunohistochemistry of MS4A6A in rat brain tissue with MS4A6A antibody at 2.5 µg/mL.



Immunofluorescence of MS4A6A in rat brain tissue with MS4A6A antibody at 20 μ g/mL.

MS4A6A Antibody - Background

MS4A6A Antibody: The MS4A gene family in humans includes CD20 (MS4A1), FcRbeta (MS4A2), Htm4 (MS4A3), and at least 13 other genes encoding membrane proteins, most having characteristic tetraspanning topology and similar intron/exon splice boundaries. All family members display unique expression patterns among hematopoietic cells and non-lymphoid tissues. The function of MS4A6A has been suggested to be involved in signal transduction as a component of a multimeric receptor complex in Alzheimer's disease and cancer.

MS4A6A Antibody - References

Liang Y and Tedder TF. Identification of a CD20-, FcepsilonRIbeta-, and HTm4-related gene family: sixteen new MS4A family members expressed in human and mouse. *Genomics* 2001; 72:119-27

Ishibashi K, Suzuki M, Sasaki S, et al. Identification of a new multigene four-transmembrane family (MS4A) related to CD20, HTm4 and beta subunit of the high-affinity IgE receptor. *Gene* 2001; 264:87-93.

Antúnez C, Boada M, Gonzalez-Pérez A, et al. The membrane-spanning 4-domains, subfamily A (MS4A) gene cluster contains a common variant associated with Alzheimer's disease. *Genome Med.* 2011; 3:33

Hollingworth P, Harold D, Sims R, et al. Common variants at ABCA7, MS4A6A/MS4A4E, EPHA1, CD33 and CD2AP are associated with Alzheimer's disease. *Nat. Genet.* 2011; 43:429-35.