

**LEMD3 Antibody**  
Catalog # ASC11406**Specification**

---

**LEMD3 Antibody - Product Information**

Application	WB, IHC-P, IF, E
Primary Accession	<a href="#">O9Y2U8</a>
Other Accession	<a href="#">NP_055134</a> , <a href="#">7706607</a>
Reactivity	Human, Mouse
Host	Rabbit
Clonality	Polyclonal
Isotype	IgG
Application Notes	LEMD3 antibody can be used for detection of LEMD3 by Western blot at 1 µg/mL. Antibody can also be used for immunohistochemistry starting at 2.5 µg/mL. For immunofluorescence start at 5 µg/mL.

**LEMD3 Antibody - Additional Information**

Gene ID 23592

**Target/Specificity**

LEMD3; At least three isoforms of LEMD3 are known to exist; this antibody will detect all isoforms. LEMD3 antibody is predicted to not cross-react with LEMD1 and LEMD2

**Reconstitution & Storage**

LEMD3 antibody can be stored at 4°C for three months and -20°C, stable for up to one year. As with all antibodies care should be taken to avoid repeated freeze thaw cycles. Antibodies should not be exposed to prolonged high temperatures.

**Precautions**

LEMD3 Antibody is for research use only and not for use in diagnostic or therapeutic procedures.

**LEMD3 Antibody - Protein Information**

Name LEMD3

Synonyms MAN1

**Function**

Can function as a specific repressor of TGF-beta, activin, and BMP signaling through its interaction with the R-SMAD proteins. Antagonizes TGF-beta-induced cell proliferation arrest.

**Cellular Location**

Nucleus inner membrane; Multi-pass membrane protein

**Tissue Location**

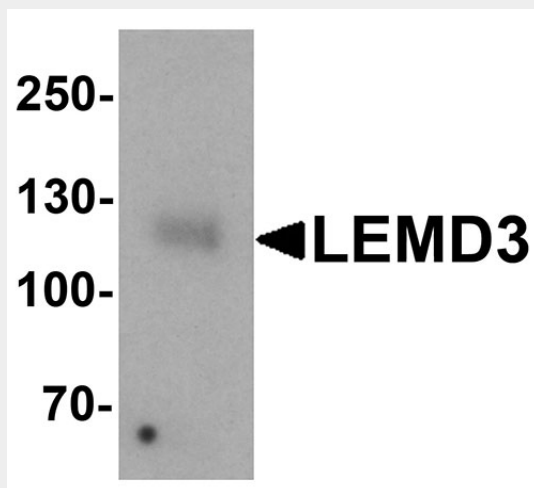
Heart, brain, placenta, lung, liver and skeletal muscle

### LEMD3 Antibody - Protocols

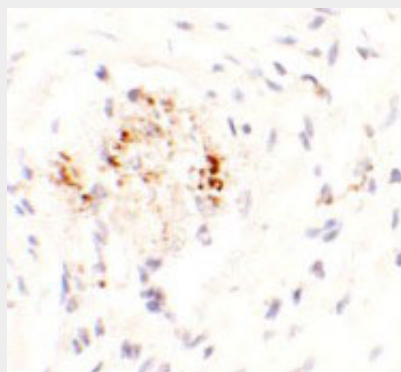
Provided below are standard protocols that you may find useful for product applications.

- [Western Blot](#)
- [Blocking Peptides](#)
- [Dot Blot](#)
- [Immunohistochemistry](#)
- [Immunofluorescence](#)
- [Immunoprecipitation](#)
- [Flow Cytometry](#)
- [Cell Culture](#)

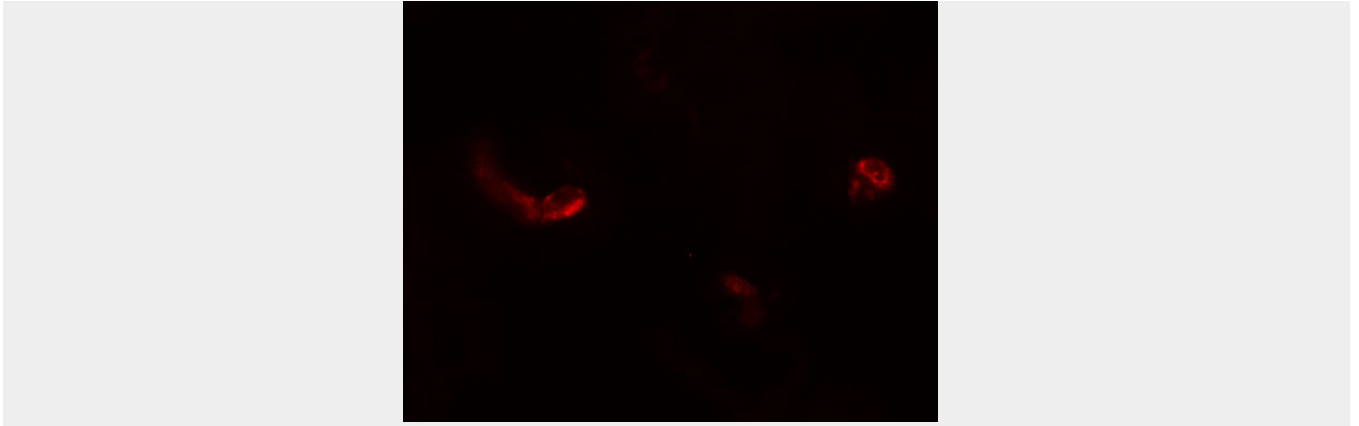
### LEMD3 Antibody - Images



Western blot analysis of LEMD3 in human colon tissue lysate with LEMD3 antibody at 1 µg/mL.



Immunohistochemistry of LEMD3 in human colon tissue with LEMD3 antibody at 2.5 µg/mL.



Immunofluorescence of LEMD3 in human colon tissue with LEMD3 antibody at 5  $\mu$ g/mL.

### **LEM3 Antibody - Background**

LEM3 Antibody: LEM3 (LEM domain-containing 3) is a lem-domain containing protein, also known as MAN1, whose loss of function results in disorders characterized by osteopoikilosis, Buschke-Ollendorff syndrome, and melorheostosis. LEM3 is an inner nuclear membrane protein that interacts with BMP and activin-TGF-beta receptor-activated Smads and antagonizes TGF-beta signaling in human cells.

### **LEM3 Antibody - References**

Hellemans J, Preobrazhenska O, Willaert A, et al. Loss-of-function mutations in LEM3 result in osteopoikilosis, Buschke-Ollendorff syndrome, and melorheostosis. *Nat. Genet.* 2004; 36:1213-8.