

ANKLE1 Antibody
Catalog # ASC11408**Specification**

ANKLE1 Antibody - Product Information

Application	WB, E
Primary Accession	Q8NAG6
Other Accession	NP_689576 , 168229256
Reactivity	Human, Mouse, Rat
Host	Chicken
Clonality	Polyclonal
Isotype	IgY
Application Notes	ANKLE1 antibody can be used for detection of ANKLE1 by Western blot at 1 - 2 µg/mL.

ANKLE1 Antibody - Additional InformationGene ID **126549****Target/Specificity**

ANKLE1; Two isoforms of ANKLE1 are known to exist. ANKLE1 antibody is predicted to not cross-react with ANKLE2

Reconstitution & Storage

ANKLE1 antibody can be stored at 4°C for three months and -20°C, stable for up to one year. As with all antibodies care should be taken to avoid repeated freeze thaw cycles. Antibodies should not be exposed to prolonged high temperatures.

Precautions

ANKLE1 Antibody is for research use only and not for use in diagnostic or therapeutic procedures.

ANKLE1 Antibody - Protein Information**Name** ANKLE1**Synonyms** ANKRD41, LEM3**Function**

Endonuclease that probably plays a role in the DNA damage response and DNA repair.

Cellular Location

Cytoplasm. Nucleus. Note=At the steady state, localizes predominantly in the cytoplasm.

Tissue Location

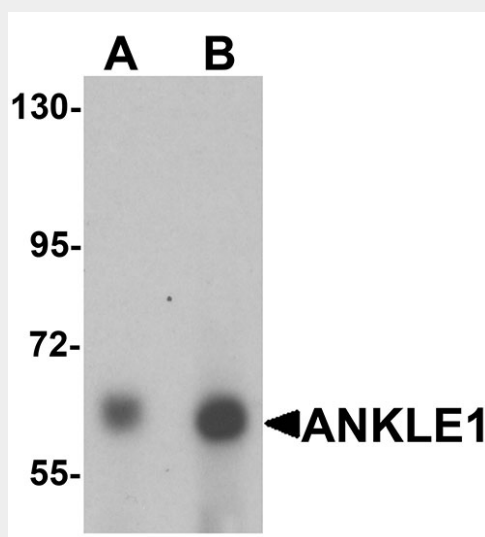
Expression is predominant in adult bone marrow.

ANKLE1 Antibody - Protocols

Provided below are standard protocols that you may find useful for product applications.

- [Western Blot](#)
- [Blocking Peptides](#)
- [Dot Blot](#)
- [Immunohistochemistry](#)
- [Immunofluorescence](#)
- [Immunoprecipitation](#)
- [Flow Cytometry](#)
- [Cell Culture](#)

ANKLE1 Antibody - Images



Western blot analysis of ANKLE1 in 293 cell lysate with ANKLE1 antibody at (A) 1 and (B) 2 µg/mL.

ANKLE1 Antibody - Background

ANKLE1 Antibody: Ankyrins are membrane adaptor molecules that play important roles in coupling integral membrane proteins to the spectrin-based cytoskeleton network. ANKLE1 (Ankyrin repeat and LEM domain containing 1) is a member of ankyrin repeat and LEM domain containing family. It is a potential single-pass membrane protein that contains ankyrin repeats and a Lem domain. Ankyrin repeats mediate protein-protein interactions and are among the most common structural motifs in known proteins. While the function of this protein is still under investigation, its gene locus has been associated with susceptibility to ovarian and breast cancer.

ANKLE1 Antibody - References

Lee KK and Wilson KL. All in the family: evidence for four new LEM-domain proteins Lem2 (NET-25), Lem3, Lem4 and Lem5 in the human genome. *Symp. Soc. Exp. Biol.* 2004; 56:329-39.
Bolton KL, Tyrer J, Song H, et al. Common variants at 19p13 are associated with susceptibility to ovarian cancer. *Nat. Genet.* 2010; 42:880-4.
Antoniou AC, Wang X, Fredericksen ZS, et al. A locus on 19p13 modifies risk of breast cancer in BRCA1 mutation carriers and is associated with hormone receptor-negative breast cancer in the general population. *Nat. Genet.* 2010; 42:885-92.