

**ANKLE2 Antibody**  
**Catalog # ASC11409****Specification****ANKLE2 Antibody - Product Information**

Application	WB, E
Primary Accession	<a href="#">Q86XL3</a>
Other Accession	<a href="#">AAH43157</a> , <a href="#">148664230</a>
Reactivity	Human, Mouse, Rat
Host	Chicken
Clonality	Polyclonal
Isotype	IgY
Application Notes	ANKLE2 antibody can be used for detection of ANKLE2 by Western blot at 1 - 2 µg/mL.

**ANKLE2 Antibody - Additional Information**Gene ID **23141****Target/Specificity**

ANKLE2; Three isoforms of ANKLE2 are known to exist; this antibody will detect all three. ANKLE2 antibody is predicted to not cross-react with ANKLE1.

**Reconstitution & Storage**

ANKLE2 antibody can be stored at 4°C for three months and -20°C, stable for up to one year. As with all antibodies care should be taken to avoid repeated freeze thaw cycles. Antibodies should not be exposed to prolonged high temperatures.

**Precautions**

ANKLE2 Antibody is for research use only and not for use in diagnostic or therapeutic procedures.

**ANKLE2 Antibody - Protein Information****Name** ANKLE2**Synonyms** KIAA0692, LEM4**Function**

Involved in mitotic nuclear envelope reassembly by promoting dephosphorylation of BAF/BANF1 during mitotic exit (PubMed: [22770216](http://www.uniprot.org/citations/22770216)). Coordinates the control of BAF/BANF1 dephosphorylation by inhibiting VRK1 kinase and promoting dephosphorylation of BAF/BANF1 by protein phosphatase 2A (PP2A), thereby facilitating nuclear envelope assembly (PubMed: [22770216](http://www.uniprot.org/citations/22770216)). May regulate nuclear localization of VRK1 in non-dividing cells (PubMed: [31735666](http://www.uniprot.org/citations/31735666)). It is unclear whether it acts as a real PP2A regulatory subunit or whether it is involved in recruitment of the PP2A complex (PubMed: [22770216](http://www.uniprot.org/citations/22770216)). Involved in brain development (PubMed: [22770216](http://www.uniprot.org/citations/22770216)).

href="http://www.uniprot.org/citations/25259927" target="\_blank">25259927</a>).

#### **Cellular Location**

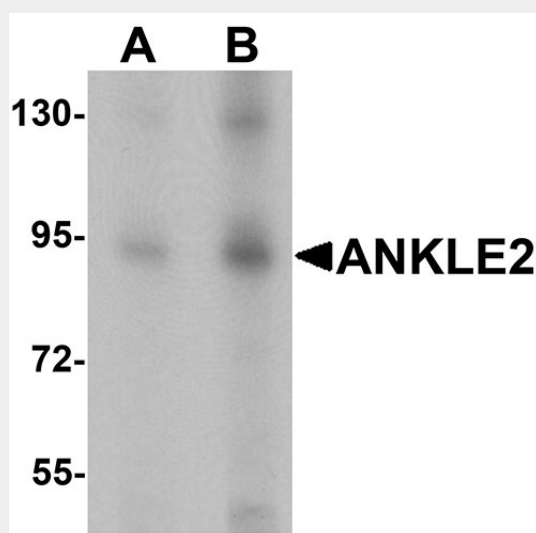
Endoplasmic reticulum membrane; Single-pass type III membrane protein

#### **ANKLE2 Antibody - Protocols**

Provided below are standard protocols that you may find useful for product applications.

- [Western Blot](#)
- [Blocking Peptides](#)
- [Dot Blot](#)
- [Immunohistochemistry](#)
- [Immunofluorescence](#)
- [Immunoprecipitation](#)
- [Flow Cytometry](#)
- [Cell Culture](#)

#### **ANKLE2 Antibody - Images**



Western blot analysis of ANKLE2 in SW480 cell lysate with ANKLE2 antibody at (A) 1 and (B) 2 µg/mL.

#### **ANKLE2 Antibody - Background**

ANKLE2 Antibody: Ankyrins are membrane adaptor molecules that play important roles in coupling integral membrane proteins to the spectrin-based cytoskeleton network. ANKLE2 (Ankyrin repeat and LEM domain containing 2) is a member of ankyrin repeat and LEM domain containing family. It is a potential single-pass membrane protein that contains three ankyrin repeats and a Lem domain. Ankyrin repeats mediate protein-protein interactions and are among the most common structural motifs in known proteins. The function of this protein is still under investigation.

#### **ANKLE2 Antibody - References**

Lee KK and Wilson KL. All in the family: evidence for four new LEM-domain proteins Lem2 (NET-25), Lem3, Lem4 and Lem5 in the human genome. Symp. Soc. Exp. Biol. 2004; 56:329-39

