

**CASKIN2 Antibody**  
**Catalog # ASC11431****Specification**

---

**CASKIN2 Antibody - Product Information**

Application	WB, ICC, IF
Primary Accession	<a href="#">Q8WXE0</a>
Other Accession	<a href="#">NP_065804</a> , <a href="#">217416347</a>
Reactivity	Human
Host	Rabbit
Clonality	Polyclonal
Isotype	IgG
Application Notes	CASKIN2 antibody can be used for detection of EPAC1 by Western blot at 1 µg/mL. Antibody can also be used for immunocytochemistry starting at 2.5 µg/mL. For immunofluorescence start at 5 µg/mL.

**CASKIN2 Antibody - Additional Information**

Gene ID **57513**

**Target/Specificity**

CASKIN2; CASKIN2 antibody is predicted to not cross-react with other CASKIN family members. Three isoforms of CASKIN2 are known to exist; this antibody will not detect the shortest isoform.

**Reconstitution & Storage**

CASKIN2 antibody can be stored at 4°C for three months and -20°C, stable for up to one year. As with all antibodies care should be taken to avoid repeated freeze thaw cycles. Antibodies should not be exposed to prolonged high temperatures.

**Precautions**

CASKIN2 Antibody is for research use only and not for use in diagnostic or therapeutic procedures.

**CASKIN2 Antibody - Protein Information**

**Name** CASKIN2

**Synonyms** KIAA1139

**Cellular Location**

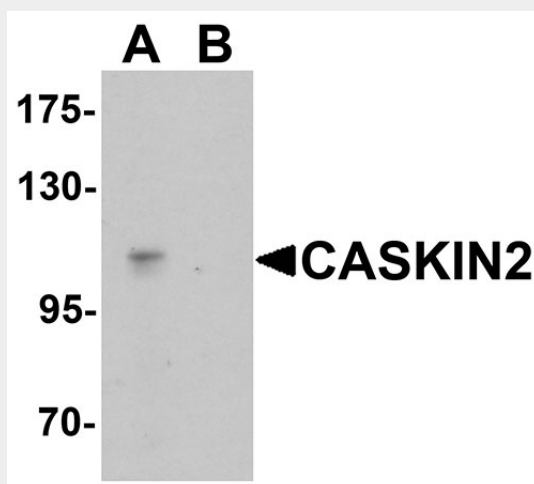
Cytoplasm.

**CASKIN2 Antibody - Protocols**

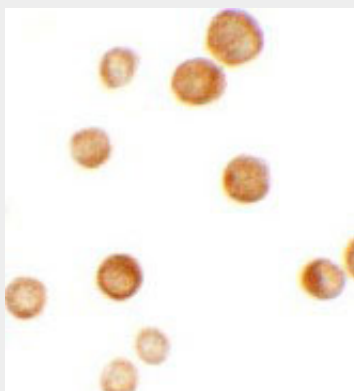
Provided below are standard protocols that you may find useful for product applications.

- [Western Blot](#)
- [Blocking Peptides](#)
- [Dot Blot](#)
- [Immunohistochemistry](#)
- [Immunofluorescence](#)
- [Immunoprecipitation](#)
- [Flow Cytometry](#)
- [Cell Culture](#)

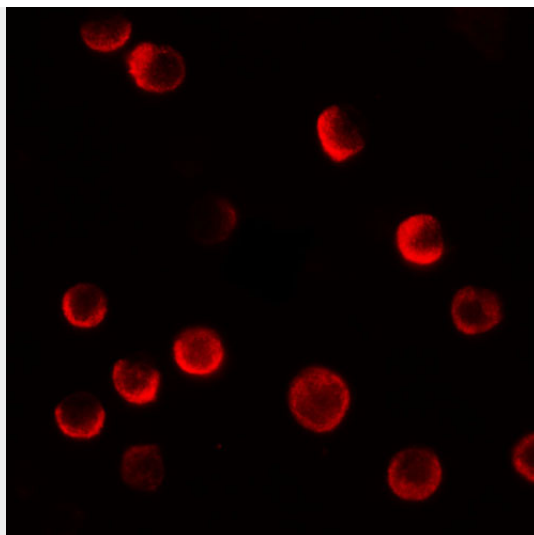
#### CASKIN2 Antibody - Images



Western blot analysis of CASKIN2 in HeLa cell lysate with CASKIN2 antibody at 1  $\mu\text{g/mL}$  in (A) the absence and (B) the presence of blocking peptide.



Immunocytochemistry of CASKIN2 in HeLa cells with CASKIN2 antibody at 2.5  $\mu\text{g/mL}$ .



Immunofluorescence of CASKIN2 in HeLa cells with CASKIN2 antibody at 20  $\mu$ g/mL.

### **CASKIN2 Antibody - Background**

CASKIN2 Antibody: Calcium/calmodulin-dependent serine protein kinase (CASK) is a conserved multi-domain scaffolding protein involved in brain development, synapse formation, and establishment of cell polarity. CASKINs (CASK interacting protein ) interact with CASK and is thought to play a role in CASK function, specifically by coupling CASK to distinct downstream effectors. CASKIN2 is a multidomain protein containing six N-terminal ankyrin repeats, one SH3 domain, and two sterile alpha motif domains followed by a long proline-rich sequence and a short conserved C-terminal domain. It is expressed ubiquitously with highest levels present in fetal and adult liver tissue.

### **CASKIN2 Antibody - References**

Stafford RL, Ear J, Knight MJ, et al. The molecular basis of the Caskin1 and Mint1 interaction with CASK. *J. Mol. Biol.* 2011; 412:3-13  
Weng YL, Liu N, DiAntonio A, et al. The cytoplasmic adaptor protein Caskin mediates Lar signal transduction during *Drosophila* motor axon guidance. *Neurosci.* 2011; 31:4421-33.  
Tabuchi K, Biederer T, Butz S, et al. CASK participates in alternative tripartite complexes in which Mint 1 competes for binding with CASKIN2, a novel CASK-binding protein. *J. Neurosci.* 2002; 22:4264-73.