

NKX2-6 Antibody
Catalog # ASC11448**Specification**

NKX2-6 Antibody - Product Information

Application	WB, IHC-P, IF, E
Primary Accession	A6NCS4
Other Accession	NP_001129743 , 343183350
Reactivity	Human, Mouse
Host	Rabbit
Clonality	Polyclonal
Isotype	IgG
Application Notes	NKX2-6 antibody can be used for detection of NKX2-6 by Western blot at 1 µg/mL. Antibody can also be used for immunohistochemistry starting at 5 µg/mL. For immunofluorescence start at 5 µg/mL.

NKX2-6 Antibody - Additional InformationGene ID **137814****Target/Specificity**

NKX2-6; NKX2-6 antibody is predicted to not cross-react with other NK2 homeobox family members. At least two isoforms of NKX2-6 are known to exist; this antibody will detect both isoforms

Reconstitution & Storage

NKX2-6 antibody can be stored at 4°C for three months and -20°C, stable for up to one year. As with all antibodies care should be taken to avoid repeated freeze thaw cycles. Antibodies should not be exposed to prolonged high temperatures.

Precautions

NKX2-6 Antibody is for research use only and not for use in diagnostic or therapeutic procedures.

NKX2-6 Antibody - Protein Information**Name** NKX2-6**Synonyms** NKX2F**Function**

Acts as a transcriptional activator (PubMed:15649947). In conjunction with NKX2-5, may play a role in both pharyngeal and cardiac embryonic development.

Cellular Location

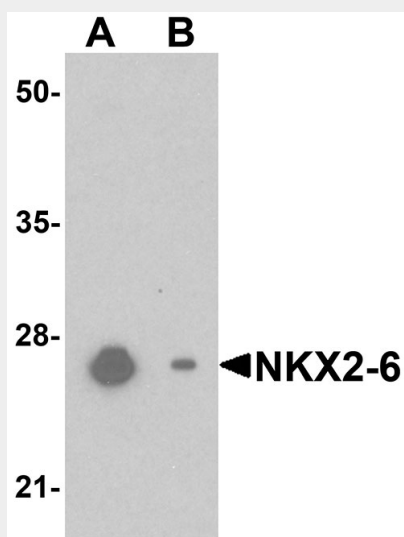
Nucleus.

NKX2-6 Antibody - Protocols

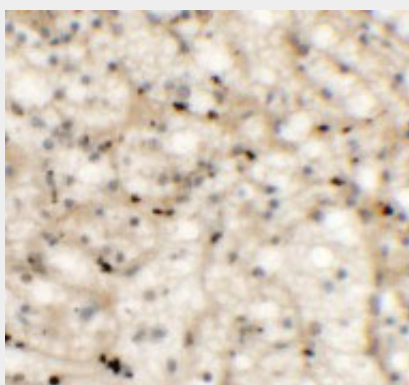
Provided below are standard protocols that you may find useful for product applications.

- [Western Blot](#)
- [Blocking Peptides](#)
- [Dot Blot](#)
- [Immunohistochemistry](#)
- [Immunofluorescence](#)
- [Immunoprecipitation](#)
- [Flow Cytometry](#)
- [Cell Culture](#)

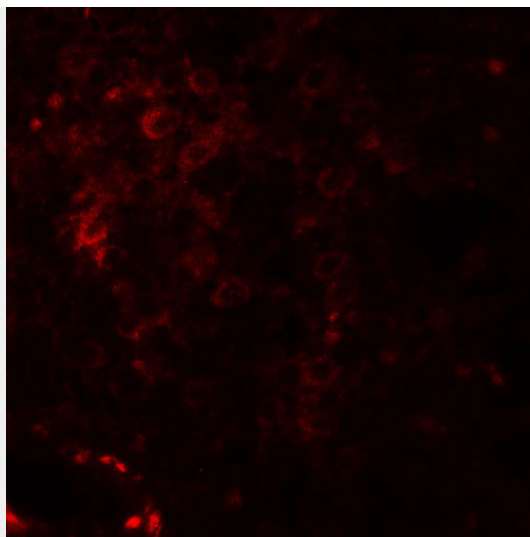
NKX2-6 Antibody - Images



Western blot analysis of NKX2-6 in mouse heart tissue lysate with NKX2-6 antibody at 1 μ g/mL in (A) the absence and (B) the presence of blocking peptide.



Immunohistochemistry of NKX2-6 in human spleen tissue with NKX2-6 antibody at 5 μ g/mL.



Immunofluorescence of NKX-6 in human spleen tissue with NKX2-6 antibody at 20 µg/mL.

NKX2-6 Antibody - Background

NKX2-6 Antibody: NKX2-6 (NK2 homeobox 6) is a member of a family of transcription factors that are involved in embryonic development and cell fate. NKX2-6 is a vertebrate homolog of *Drosophila* homeobox-containing protein called 'tinman', which has been shown to be essential for development of the heart-like dorsal vessel. In conjunction with related gene, NKX2-5, this gene may play a role in both pharyngeal and cardiac embryonic development. Mutations in this gene are thought to be a cause for some congenital heart abnormalities.

NKX2-6 Antibody - References

Copeland NG, Jenkins NA, and Harvey RP. The murine homeobox genes *Nkx2.3* and *Nkx2.6* are located on chromosomes 19 and 14, respectively. *Genomics* 1994; 22:655-6.

Tanaka M, Kasahara H, Bartunkova S, et al. Vertebrate homologs of tinman and bagpipe: roles of the homeobox genes in cardiovascular development. *Dev. Genet.* 1998; 22:239-49.

Biben C, Hatzistavrou T, and Harvey RP. Expression of NK-2 class homeobox gene *Nkx2-6* in foregut endoderm and heart. *Mech. Dev.* 1998; 73:125-7

Tanaka M, Schinke M, Liao HS, et al. *Nkx2.5* and *Nkx2.6*, homologs of *Drosophila* tinman, are required for development of the pharynx. *Mol. Cell. Biol.* 2001; 21:4391-8.