

YPEL1 Antibody
Catalog # ASC11456**Specification**

YPEL1 Antibody - Product Information

Application	WB, IF, ICC, E
Primary Accession	O60688
Other Accession	NP_037445 , 9558721
Reactivity	Human, Mouse, Rat
Host	Rabbit
Clonality	Polyclonal
Isotype	IgG
Application Notes	YPEL1 antibody can be used for detection of YPEL1 by Western blot at 1 µg/mL. Antibody can also be used for immunocytochemistry starting at 2.5 µg/mL. For immunofluorescence start at 2.5 µg/mL.

YPEL1 Antibody - Additional Information

Gene ID	29799
Target/Specificity	
YPEL1;	

Reconstitution & Storage

YPEL1 antibody can be stored at 4°C for three months and -20°C, stable for up to one year. As with all antibodies care should be taken to avoid repeated freeze thaw cycles. Antibodies should not be exposed to prolonged high temperatures.

Precautions

YPEL1 Antibody is for research use only and not for use in diagnostic or therapeutic procedures.

YPEL1 Antibody - Protein Information

Name YPEL1

Function

May play a role in epithelioid conversion of fibroblasts.

Cellular Location

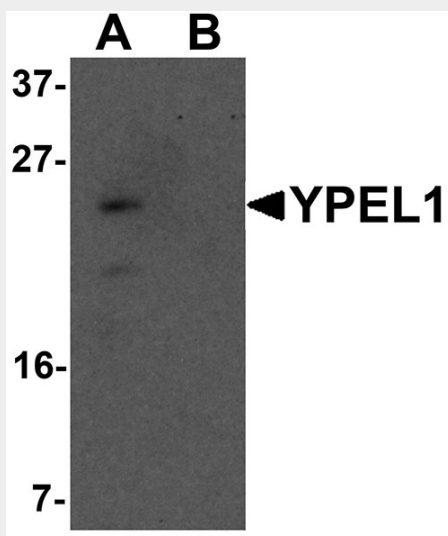
Nucleus.

YPEL1 Antibody - Protocols

Provided below are standard protocols that you may find useful for product applications.

- [Western Blot](#)
- [Blocking Peptides](#)
- [Dot Blot](#)
- [Immunohistochemistry](#)
- [Immunofluorescence](#)
- [Immunoprecipitation](#)
- [Flow Cytometry](#)
- [Cell Culture](#)

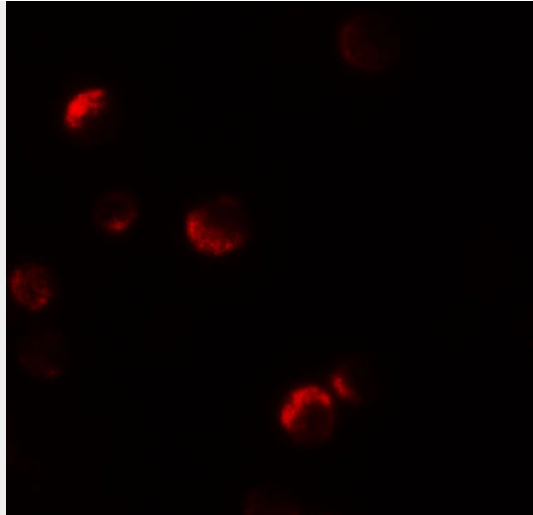
YPEL1 Antibody - Images



Western blot analysis of YPEL1 in HeLa cell lysate with YPEL1 antibody at 1 $\mu\text{g/mL}$ in (A) the absence and (B) the presence of blocking peptide.



Immunocytochemistry of YPEL1 in HeLa cells with YPEL1 antibody at 2.5 $\mu\text{g/mL}$.



Immunofluorescence of YPEL1 in HeLa cells with YPEL1 antibody at 20 µg/mL.

YPEL1 Antibody - Background

YPEL1 Antibody: YPEL1 (yippee-like 1) is thought to play a role in the epitheloid conversion of fibroblasts and the regulation of the cellular morphology. It is a 119 amino acid protein that localizes to the nucleus and belongs to a family of yippee-like proteins that include YPEL2 - 5, all of which localize to the centrosome and nucleus and are widely expressed in both adult and fetal tissue. The family of human YPEL proteins share a high degree of sequence homology with their rodent homologs, suggesting a conserved function between species. YPEL1 might be an important factor during the development and malignant transformation of tissues.

YPEL1 Antibody - References

Farlie P, Reid C, Wilcox S, et al. YPEL1: a novel nuclear protein that induces an epithelial-like morphology in fibroblasts. *Genes Cells* 2001; 6:619-29.
Hosono K, Sasaki T, Minoshima S, et al. Identification and characterization of a novel gene family YPEL in a wide spectrum of eukaryotic species. *Gene* 2004; 340: 31-43
Abiatari I, Kiladze M, Kerkadze V, et al. Expression of YPEL1 in pancreatic cancer cell lines and tissues. *Georgian Med. News* 2009; (175):60-2.