

YPEL4 Antibody
Catalog # ASC11459**Specification**

YPEL4 Antibody - Product Information

Application	WB, ICC, IF
Primary Accession	Q96NS1
Other Accession	NP_659445 , 219539
Reactivity	Human, Mouse
Host	Rabbit
Clonality	Polyclonal
Isotype	IgG
Application Notes	YPEL4 antibody can be used for detection of YPEL4 by Western blot at 1 µg/mL.

YPEL4 Antibody - Additional InformationGene ID **219539****Target/Specificity**

YPEL4 antibody was raised against a 12 amino acid synthetic peptide near the amino terminus of human YPEL4.

The immunogen is located within the first 50 amino acids of YPEL4.

Reconstitution & Storage

YPEL4 antibody can be stored at 4°C for three months and -20°C, stable for up to one year. As with all antibodies care should be taken to avoid repeated freeze thaw cycles. Antibodies should not be exposed to prolonged high temperatures.

Precautions

YPEL4 Antibody is for research use only and not for use in diagnostic or therapeutic procedures.

YPEL4 Antibody - Protein Information**Name** YPEL4**Cellular Location**

Nucleus, nucleolus.

Tissue Location

Widely expressed. Detected adult brain, lung, colon, small intestine and ovary, and in fetal brain, lung, liver and spleen.

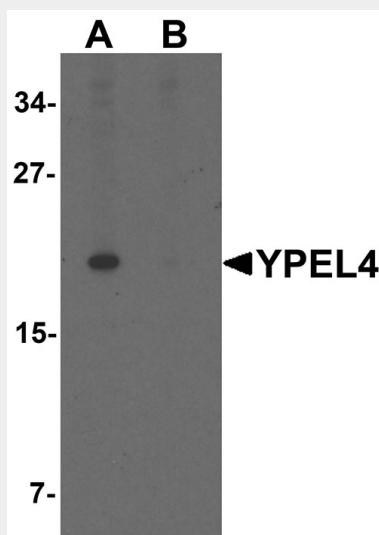
YPEL4 Antibody - Protocols

Provided below are standard protocols that you may find useful for product applications.

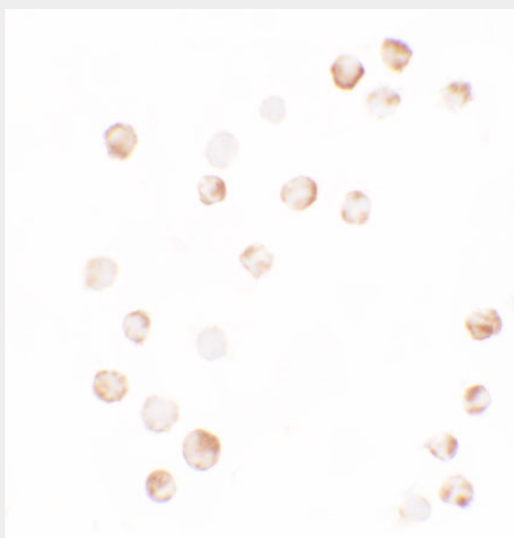
- [Western Blot](#)

- [Blocking Peptides](#)
- [Dot Blot](#)
- [Immunohistochemistry](#)
- [Immunofluorescence](#)
- [Immunoprecipitation](#)
- [Flow Cytometry](#)
- [Cell Culture](#)

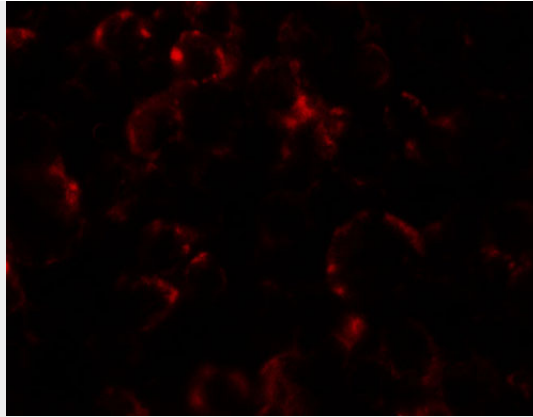
YPEL4 Antibody - Images



Western blot analysis of YPEL4 in SW480 cell lysate with YPEL4 antibody at 1 µg/mL in (A) the absence and (B) the presence of blocking peptide.



Immunocytochemistry of YPEL4 in SW480 cells with YPEL4 antibody at 2.5 µg/mL.



Immunofluorescence of YPEL4 in SW480 cells with YPEL4 antibody at 5 µg/ml.

YPEL4 Antibody - Background

YPEL4 Antibody: YPEL4 (yippee-like 4) belongs to a family of five yippee-like proteins, all of which localize to the centrosome or mitotic spindle and are widely expressed in both adult and fetal tissue. This localization plus the fact that the family of human YPEL proteins share a high degree of sequence homology across species suggests that these proteins may have a conserved function involved in cell division. YPEL4 is ubiquitously expressed in adult tissues and has been shown to associate with the major vault protein (MVP). It has been suggested that MVP can inhibit YPEL4's ability to activate Elk-1 in the MAPK signaling pathway.

YPEL4 Antibody - References

Hosono K, Sasaki T, Minoshima S, et al. Identification and characterization of a novel gene family YPEL in a wide spectrum of eukaryotic species. *Gene* 2004; 340: 31-43
Liang P, Wan Y, Yan Y, et al. MVP interacts with YPEL4 and inhibits YPEL4-mediated activities of the ERK signal pathway. *Biochem. Cell. Biol.* 2010; 88:445-50.