

RLP2 Antibody
Catalog # ASC11469**Specification**

RLP2 Antibody - Product Information

Application	WB, IHC, IF
Primary Accession	Q969X0
Other Accession	NP_659495 , 21450828
Reactivity	Human
Host	Rabbit
Clonality	Polyclonal
Isotype	IgG
Application Notes	RLP2 antibody can be used for detection of RLP2 by Western blot at 1 - 2 µg/mL. Antibody can also be used for immunohistochemistry starting at 2.5 µg/mL. For immunofluorescence start at 2.5 µg/mL.

RLP2 Antibody - Additional Information

Gene ID	196383
Target/Specificity	
RILPL2;	

Reconstitution & Storage

RLP2 antibody can be stored at 4°C for three months and -20°C, stable for up to one year. As with all antibodies care should be taken to avoid repeated freeze thaw cycles. Antibodies should not be exposed to prolonged high temperatures.

Precautions

RLP2 Antibody is for research use only and not for use in diagnostic or therapeutic procedures.

RLP2 Antibody - Protein Information

Name RILPL2

Synonyms RLP2

Function

Involved in cell shape and neuronal morphogenesis, positively regulating the establishment and maintenance of dendritic spines (By similarity). Plays a role in cellular protein transport, including protein transport away from primary cilia (By similarity). May function via activation of RAC1 and PAK1 (By similarity).

Cellular Location

Cytoplasm, cytosol. Cytoplasm, cytoskeleton, microtubule organizing center, centrosome. Cell projection, cilium

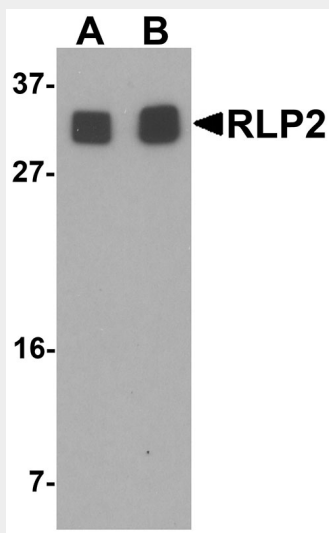
Tissue Location

Widely expressed. Expressed at higher level in lung.

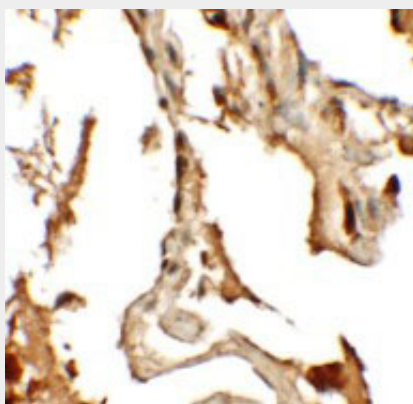
RLP2 Antibody - Protocols

Provided below are standard protocols that you may find useful for product applications.

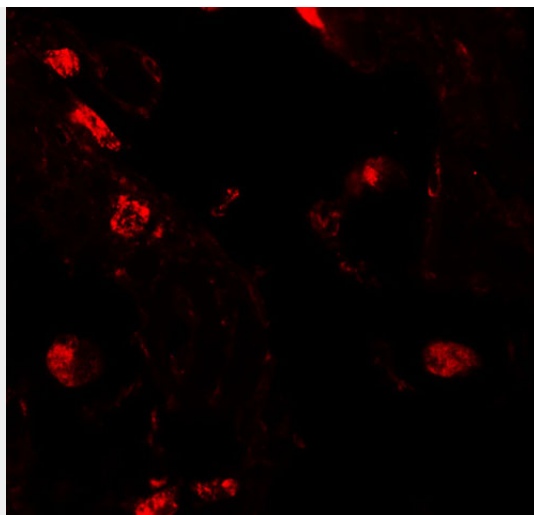
- [Western Blot](#)
- [Blocking Peptides](#)
- [Dot Blot](#)
- [Immunohistochemistry](#)
- [Immunofluorescence](#)
- [Immunoprecipitation](#)
- [Flow Cytometry](#)
- [Cell Culture](#)

RLP2 Antibody - Images

Western blot analysis of RLP2 in A549 cell lysate with RLP2 antibody at (A) 1 and (B) 2 µg/mL.



Immunohistochemistry of RLP2 in human lung tissue with RLP2 antibody at 2.5 µg/mL.



Immunofluorescence of RLP2 in human lung tissue with RLP2 antibody at 20 µg/mL.

RLP2 Antibody - Background

RLP2 Antibody: The Rab interacting lysosomal protein-like 2 (RLP2) protein is related to the lysosomal protein RILP which interacts with RAB7, a small GTPase that controls transport to endocytic degradative compartments. Little is known of the exact function of RLP2, but it is thought that RILP is a downstream effector of RAB7 and both proteins act together in the regulation of late endocytic traffic, suggesting that RLP2 may be involved in endocytic traffic with RILP or play a similar role. RILP and possible RLP2 may also play a role in the biogenesis of multivesicular bodies.

RLP2 Antibody - References

Wang T, Wong KK, and Hong W. A unique region of RILP distinguishes it from its related proteins in its regulation of lysosomal morphology and interaction with Rab7 and Rab34. *Mol. Biol. Cell* 2004; 15:815-26.

Cantalupo G, Alifano P, Roberti V, et al. Rab-interacting lysosomal protein (RILP): the Rab7 effector required for transport to lysosomes. *EMBO J.* 2001; 20:683-93.

Progida C, Spinosa MR, De Luca A, et al. RILP interacts with the VPS22 component of the ESCRT-II complex. *Biochem. Biophys. Res. Commun.* 2006; 347:1074-9.