

WDR18 Antibody
Catalog # ASC11475**Specification**

WDR18 Antibody - Product Information

Application	WB, IHC-P, E
Primary Accession	Q9BV38
Other Accession	NP_077005 , 56243583
Reactivity	Human, Mouse, Rat
Host	Rabbit
Clonality	Polyclonal
Isotype	IgG
Application Notes	WDR18 antibody can be used for detection of WDR18 by Western blot at 0.5 - 1 µg/mL. Antibody can also be used for immunohistochemistry starting at 2.5 µg/mL. For immunofluorescence start at 2.5 µg/mL.

WDR18 Antibody - Additional InformationGene ID **57418****Target/Specificity**

WDR18; WDR18 antibody is predicted to not cross-react with other WDR family members.

Reconstitution & Storage

WDR18 antibody can be stored at 4°C for three months and -20°C, stable for up to one year. As with all antibodies care should be taken to avoid repeated freeze thaw cycles. Antibodies should not be exposed to prolonged high temperatures.

Precautions

WDR18 Antibody is for research use only and not for use in diagnostic or therapeutic procedures.

WDR18 Antibody - Protein Information**Name** WDR18**Function**

Functions as a component of the Five Friends of Methylated CHTOP (5FMC) complex; the 5FMC complex is recruited to ZNF148 by methylated CHTOP, leading to desumoylation of ZNF148 and subsequent transactivation of ZNF148 target genes (PubMed:22872859). Component of the PELP1 complex involved in the nucleolar steps of 28S rRNA maturation and the subsequent nucleoplasmic transit of the pre-60S ribosomal subunit (PubMed:21326211). May play a role during development (By similarity).

Cellular Location

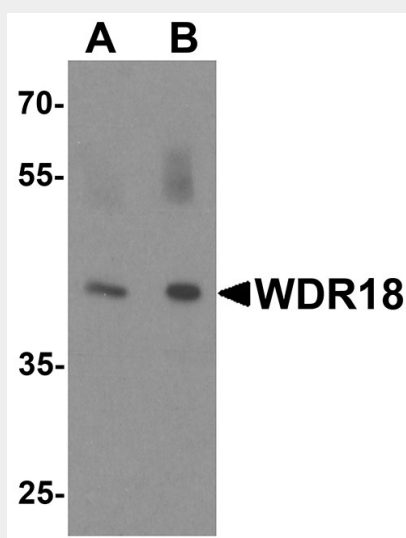
Nucleus, nucleolus. Nucleus, nucleoplasm {ECO:0000250|UniProtKB:Q4VBE8}. Cytoplasm {ECO:0000250|UniProtKB:Q4VBE8}. Dynein axonemal particle {ECO:0000250|UniProtKB:A0A1L8HX76}. Note=Mainly found in the nucleoplasm, with low levels detected in the cytoplasmic and chromatin fractions. {ECO:0000250|UniProtKB:Q4VBE8}

WDR18 Antibody - Protocols

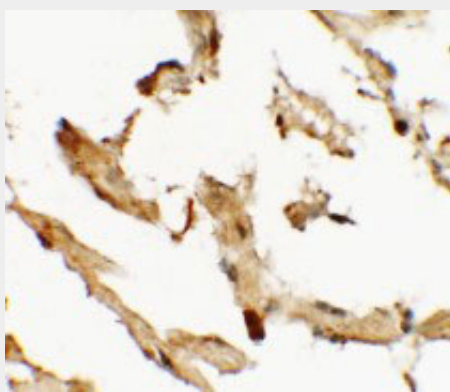
Provided below are standard protocols that you may find useful for product applications.

- [Western Blot](#)
- [Blocking Peptides](#)
- [Dot Blot](#)
- [Immunohistochemistry](#)
- [Immunofluorescence](#)
- [Immunoprecipitation](#)
- [Flow Cytometry](#)
- [Cell Culture](#)

WDR18 Antibody - Images



Western blot analysis of WDR18 in rat lung tissue lysate with WDR18 antibody at (A) 1 and (B) 2 µg/mL.



Immunohistochemistry of WDR18 in human lung tissue with WDR18 antibody at 2.5 µg/mL.

WDR18 Antibody - Background

WDR18 Antibody: WD repeat domain 18 (WDR18) is a member of the WD repeat protein family, which is involved in a variety of cellular processes, including cell cycle progression, signal transduction, apoptosis, and gene regulation. WD repeats are minimally conserved regions of approximately 40 amino acids that commonly form a tertiary propeller structure. WDR18 is a 432 amino acid protein that contains six WD repeats and is encoded by a gene located on human chromosome 19. WDR18 may play a role during development. The complex PELP1-TEX10-WDR18 is required for the maturation and nucleolar release of the large ribosomal subunit.

WDR18 Antibody - References

Smith TF, Gaitatzes C, Saxena K, et al. The WD repeat: a common architecture for diverse functions. Trends Biochem. Sci. 1999; 24:181-5.
Gao W, Xu L, Guan R, et al. Wdr18 is required for Kupffer's vesicle formation and regulation of body asymmetry in zebrafish. PLoS One 2011; 6:e23386.
Finkbeiner E, Haindl M, and Muller S. The SUMO system controls nucleolar partitioning of a novel mammalian ribosome biogenesis complex. EMBO J. 2011; 30:1067-78.