

ZBTB40 Antibody
Catalog # ASC11498**Specification**

ZBTB40 Antibody - Product Information

Application	WB, IF, E
Primary Accession	Q9NUA8
Other Accession	NP_055685 , 139394556
Reactivity	Human
Host	Rabbit
Clonality	Polyclonal
Isotype	IgG
Application Notes	ZBTB40 antibody can be used for detection of ZBTB40 by Western blot at 0.5 µg/mL. Antibody can also be used for immunofluorescence starting at 20 µg/mL. For immunofluorescence start at 5 µg/mL.

ZBTB40 Antibody - Additional Information

Gene ID 9923

Target/Specificity

ZBTB40; ZBTB40 antibody is human specific. At least two isoforms of ZBTB40 are known to exist. This antibody is predicted to not cross-react with other ZBTB protein family members.

Reconstitution & Storage

ZBTB40 antibody can be stored at 4°C for three months and -20°C, stable for up to one year. As with all antibodies care should be taken to avoid repeated freeze thaw cycles. Antibodies should not be exposed to prolonged high temperatures.

Precautions

ZBTB40 Antibody is for research use only and not for use in diagnostic or therapeutic procedures.

ZBTB40 Antibody - Protein Information**Name** ZBTB40**Synonyms** KIAA0478**Function**

May be involved in transcriptional regulation.

Cellular Location

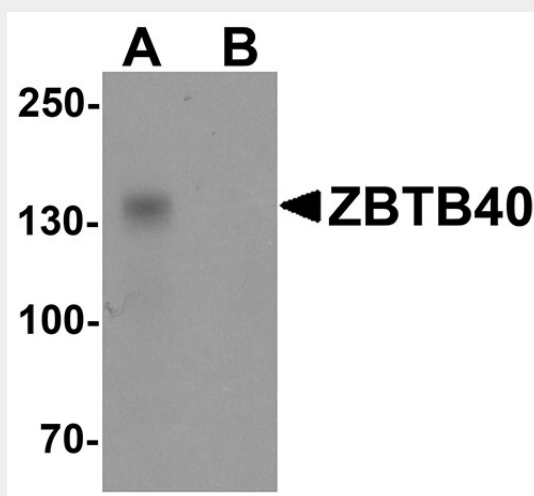
Nucleus.

ZBTB40 Antibody - Protocols

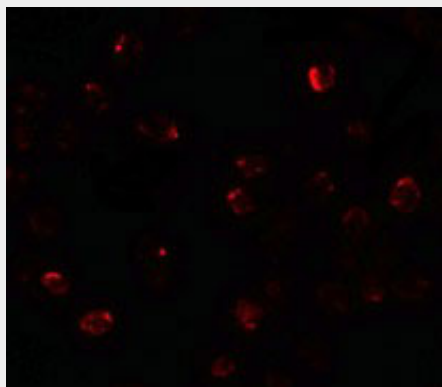
Provided below are standard protocols that you may find useful for product applications.

- [Western Blot](#)
- [Blocking Peptides](#)
- [Dot Blot](#)
- [Immunohistochemistry](#)
- [Immunofluorescence](#)
- [Immunoprecipitation](#)
- [Flow Cytometry](#)
- [Cell Culture](#)

ZBTB40 Antibody - Images



Western blot analysis of ZBTB40 in Raji cell lysate with ZBTB40 antibody at 0.5 µg/ml in (A) the absence and (B) the presence of blocking peptide.



Immunofluorescence of ZBTB40 in Raji cells with ZBTB40 antibody at 20 µg/mL.

ZBTB40 Antibody - Background

ZBTB40 Antibody: The ZBTB family of proteins is comprised of diverse zinc finger proteins that also contain a BTB (BR-C, ttk and bab) domain. While little is known about ZBTB40, other ZBTB proteins, such as ZBTB4 bind methylated DNA and repress transcription. Single nucleotide polymorphisms near ZBTB40 have been linked to differences in bone mineral density of the hip and lumbar spine, and had a significant association with low-trauma fractures suggesting that ZBTB40 may be involved in bone development and formation.

ZBTB40 Antibody - References

Filion GJP, Zhenilo S, Salozhin S, et al. A family of zinc finger proteins that bind methylated DNA and repress transcription. Mol. Cell. Biol. 2006; 26:169-81.
Styrkarsdottir U, Halldorsson BV, Gretarsdottir S, et al. Multiple genetic loci for bone mineral density and fractures. New Eng. J. Med. 2008; 358:2355-65.