

LYZL1 Antibody
Catalog # ASC11515**Specification**

LYZL1 Antibody - Product Information

Application	WB, E
Primary Accession	Q6UWQ5
Other Accession	NP_115906 , 73390143
Reactivity	Human, Mouse, Rat
Host	Rabbit
Clonality	Polyclonal
Isotype	IgG
Calculated MW	21 kDa KDa
Application Notes	LYZL1 antibody can be used for detection of LYZL1 by Western blot at 1 - 2 µg/mL.

LYZL1 Antibody - Additional InformationGene ID **84569****Target/Specificity**

LYZL1; At least two alternatively spliced transcript variants have been observed.

Reconstitution & Storage

LYZL1 antibody can be stored at 4°C for three months and -20°C, stable for up to one year. As with all antibodies care should be taken to avoid repeated freeze thaw cycles. Antibodies should not be exposed to prolonged high temperatures.

Precautions

LYZL1 Antibody is for research use only and not for use in diagnostic or therapeutic procedures.

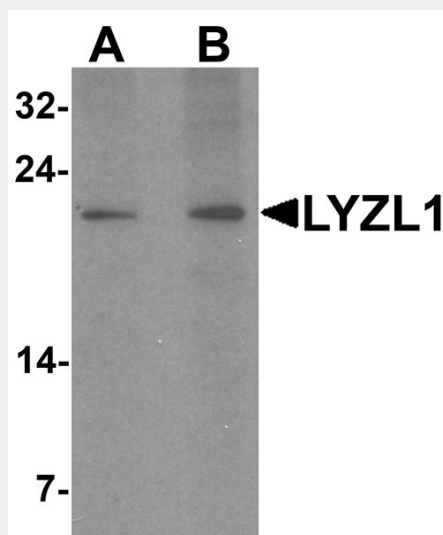
LYZL1 Antibody - Protein Information**Name** LYZL1**Synonyms** LYC2**Cellular Location**
Secreted.**LYZL1 Antibody - Protocols**

Provided below are standard protocols that you may find useful for product applications.

- [Western Blot](#)
- [Blocking Peptides](#)
- [Dot Blot](#)

- [Immunohistochemistry](#)
- [Immunofluorescence](#)
- [Immunoprecipitation](#)
- [Flow Cytometry](#)
- [Cell Culture](#)

LYZL1 Antibody - Images



Western blot analysis of LYZL1 in A20 cell lysate with LYZL1 antibody at (A) 1 and (B) 2 µg/mL.

LYZL1 Antibody - Background

LYZL1 Antibody: The lysozyme family of proteins has an important role in host defense and is associated with the monocyte-macrophage system and enhances the activity of immunoagents. The mammalian lysozyme gene family is much larger than previously appreciated and consists of at least eight distinct genes scattered around the genome. C-type lysozymes are specifically involved catalyzing the hydrolysis of β -1,4 glycosidic bonds of the peptidoglycan of bacterial cell walls. As a homolog of human C-type lysozyme, LYZL1 is an intra-acrosomal, nonbacteriolytic, c lysozyme-like protein recently isolated from human spermatozoa.

LYZL1 Antibody - References

Peters CW, Kruse U, Pollwein R, et al. The human lysozyme gene. Sequence organization and chromosomal localization. *Eur. J. Biochem.* 1989; 182:507-16.
 Irwin DM, Biegel JM, and Stewart CB. Evolution of the mammalian lysozyme gene family. *BMC Evol. Biol.* 2011; 11:166.
 Zhang K, Gao R, Zhang H, et al. Molecular cloning and characterization of three novel lysozyme-like genes, predominantly expressed in the male reproductive system of humans, belonging to the c-type lysozyme/ α -lactalbumin family. *Biol. Reprod.* 2005; 73:1064-71.
 Mandal A, Klotz KL, Shetty J, et al. SLLP1, a unique, intra-acrosomal, non-bacteriolytic, c lysozyme-like protein of human spermatozoa. *Biol. Reprod.* 2003; 68:1525-37.