

**TCTEX1D2 Antibody**  
**Catalog # ASC11517****Specification**

---

**TCTEX1D2 Antibody - Product Information**

Application	WB, IF
Primary Accession	<a href="#">Q8WW35</a>
Other Accession	<a href="#">NP_689986</a> , <a href="#">229090471</a>
Reactivity	Human
Host	Rabbit
Clonality	Polyclonal
Isotype	IgG
Calculated MW	16 kDa KDa
Application Notes	TCTEX1D2 antibody can be used for detection of TCTEX1D2 by Western blot at 1 µg/mL. For immunofluorescence start at 20 µg/mL.

**TCTEX1D2 Antibody - Additional Information**

Gene ID 255758

**Target/Specificity**

TCTEX1D2; TCTEX1D2 is predicted to not cross-react with other members of the TCTEX-type family.

**Reconstitution & Storage**

TCTEX1D2 antibody can be stored at 4°C for three months and -20°C, stable for up to one year. As with all antibodies care should be taken to avoid repeated freeze thaw cycles. Antibodies should not be exposed to prolonged high temperatures.

**Precautions**

TCTEX1D2 Antibody is for research use only and not for use in diagnostic or therapeutic procedures.

**TCTEX1D2 Antibody - Protein Information**Name DYNLT2B ([HGNC:28482](#))**Function**

Acts as one of several non-catalytic accessory components of the cytoplasmic dynein 2 complex (dynein-2 complex), a motor protein complex that drives the movement of cargos along microtubules within cilia and flagella in concert with the intraflagellar transport (IFT) system. Required for proper retrograde ciliary transport.

**Cellular Location**

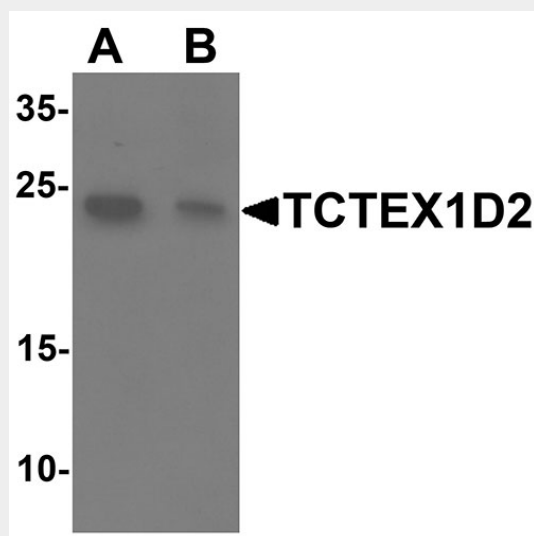
Dynein axonemal particle.

## TCTEX1D2 Antibody - Protocols

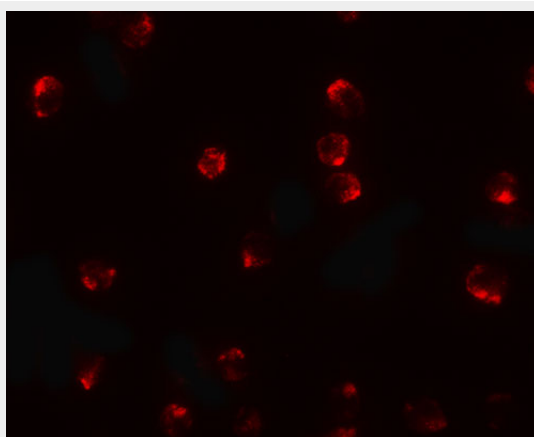
Provided below are standard protocols that you may find useful for product applications.

- [Western Blot](#)
- [Blocking Peptides](#)
- [Dot Blot](#)
- [Immunohistochemistry](#)
- [Immunofluorescence](#)
- [Immunoprecipitation](#)
- [Flow Cytometry](#)
- [Cell Culture](#)

## TCTEX1D2 Antibody - Images



Western blot analysis of TCTEX1D2 in K562 cell lysate with TCTEX1D2 antibody at 1  $\mu$ g/mL in (A) the absence and (B) the presence of blocking peptide.



Immunofluorescence of TCTEX1D2 in K562 cells with TCTEX1D2 antibody at 20  $\mu$ g/mL.

## TCTEX1D2 Antibody - Background

TCTEX1D2 Antibody: Dyneins are multi-subunit, high molecular weight ATPases that interact with microtubules to generate force by converting the chemical energy of ATP into the mechanical energy of movement. Cytoplasmic or axonemal Dynein is an approximately 12 subunit complex of

two heavy chains, two intermediate chains to anchor Dynein to its cargo, four smaller intermediate chains and several light chains. It performs functions necessary for cell survival such as organelle transport and centrosome assembly. TCTEX1 is a cytoplasmic dynein light chain found in a complex with Na<sup>+</sup> CP type X (SCN10A). TCTEX1D2, also called TCTEX1 domain containing 2, belongs to the dynein light chain TCTEX-type family. Its function is still under investigation.

#### **TCTEX1D2 Antibody - References**

He Y, Francis F, Myers KA, et al. Role of cytoplasmic dynein in the axonal transport of microtubules and neurofilaments. J. Cell Biol. 2005; 168:697-703.

Li J, Lee WL, and Cooper JA. NudEL targets dynein to microtubule ends through LIS1. Nat. Cell Biol. 2005; 7:686-90.

Watanabe TK, Fujiwara T, Shimizu F, et al. Cloning, expression, and mapping of TCTEL1, a putative human homologue of murine Tcte1 to 6q. Cytogenet. Cell Genet. 1996; 73:153-6.

Chuang JZ, Yeh TY, Bollati F, et al. The dynein light chain Tctex-1 has a dynein-independent role in actin remodeling during neurite outgrowth. Dev. Cell 2005; 9:75-86.