

CLEC2A Antibody
Catalog # ASC11520**Specification**

CLEC2A Antibody - Product Information

Application	WB, IF
Primary Accession	Q6UWV9
Other Accession	NP_001124183 , 195222725
Reactivity	Human
Host	Rabbit
Clonality	Polyclonal
Isotype	IgG
Application Notes	CLEC2A antibody can be used for detection of CLEC2A by Western blot at 1 µg/mL. For immunofluorescence start at 20 µg/mL.

CLEC2A Antibody - Additional InformationGene ID **387836****Target/Specificity**

CLEC2A; CLEC2A antibody is human specific. Two alternatively spliced transcript variants have been observed.

Reconstitution & Storage

CLEC2A antibody can be stored at 4°C for three months and -20°C, stable for up to one year. As with all antibodies care should be taken to avoid repeated freeze thaw cycles. Antibodies should not be exposed to prolonged high temperatures.

Precautions

CLEC2A Antibody is for research use only and not for use in diagnostic or therapeutic procedures.

CLEC2A Antibody - Protein Information**Name** CLEC2A**Synonyms** KACL**Function**

Plays a role in modulating the extent of T-cell expansion. Enhances the expansion of TCR-stimulated T-cells by increasing their survival through enhanced expression of anti-apoptotic proteins. May modulate the capacity of T-cells to home to lymph nodes through SELL. Facilitates dedicated immune recognition of keratinocytes via interaction with its receptor KLRF2 by stimulating natural killer cell mediated cytotoxicity.

Cellular Location

Cell membrane; Single-pass type II membrane protein

Tissue Location

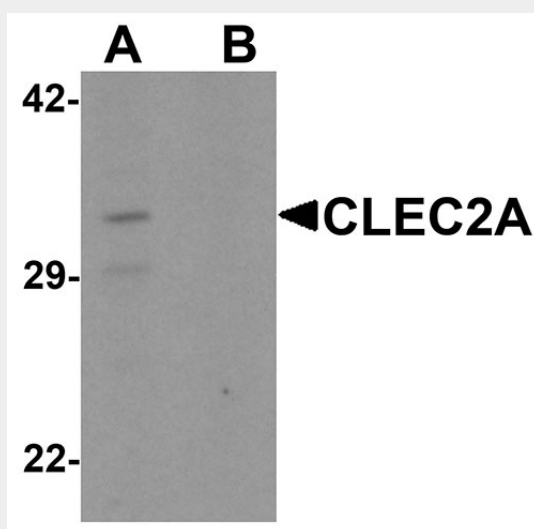
Mainly expressed in skin. Also expressed in keratinocytes, spleen, thymus, small intestine, peripheral blood monocytes, bone marrow, ovary, testis and skin. High expression in CD8(+), B-lymphocytes and naive CD4(+) T-cells. Restricted mostly to proliferating lymphocytes. Not detected in myeloid leukocytes or natural killer (NK) cells.

CLEC2A Antibody - Protocols

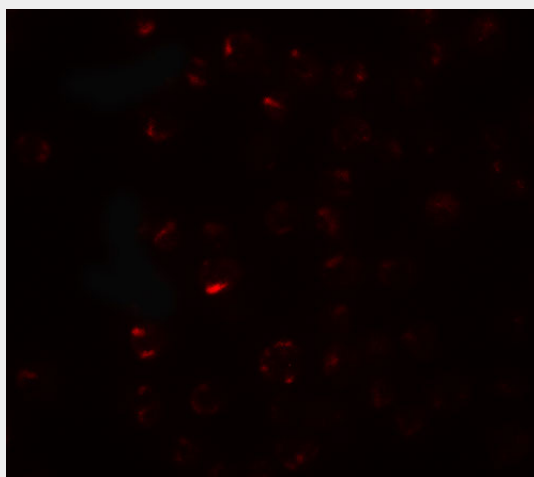
Provided below are standard protocols that you may find useful for product applications.

- [Western Blot](#)
- [Blocking Peptides](#)
- [Dot Blot](#)
- [Immunohistochemistry](#)
- [Immunofluorescence](#)
- [Immunoprecipitation](#)
- [Flow Cytometry](#)
- [Cell Culture](#)

CLEC2A Antibody - Images



Western blot analysis of CLEC2A in K562 cell lysate with CLEC2A antibody at 1 μ g/ml in (A) the absence and (B) the presence of blocking peptide.



Immunofluorescence of CLEC2A in K562 cells with CLEC2A antibody at 20 µg/mL.

CLEC2A Antibody - Background

CLEC2A Antibody: CLEC2A (C-type lectin domain family 2 member A), also known as PILAR (proliferation-induced lymphocyte-associated receptor) is involved in modulating T-cell expansion. It is a 32 kDa single-pass type II membrane protein that contains one C-type lectin domain in its extracellular region and belongs to the CTL/CTLD superfamily. CLEC2A is mainly expressed in skin and highly expressed in CD8(+), B lymphocytes and naive CD4(+) T cells. Manipulation of CLEC2A signaling may be important for treatment of autoimmune diseases and cancer.

CLEC2A Antibody - References

Huarte E, Cubillos-Ruiz JR, Nesbeth YC, et al. PILAR is a novel modulator of human T-cell expansion. *Blood* 2008; 112:1259-68.
Drickamer K. C-type lectin-like domains. *Curr. Opin. Struct. Biol.* 1999; 9:585-90
Spreu J, Kienle EC, Schrage B, et al. CLEC2A: a novel, alternatively spliced and skin-associated member of the NKC-encoded AICL-CD69-LLT1 family. *Immunogenetics* 2007; 59:903-12.
Spreu J, Kuttruff S, Stejfova V, et al. Interaction of C-type lectin-like receptors NKp65 and KACL facilitates dedicated immune recognition of human keratinocytes. *Proc. Natl. Acad. Sci. USA* 2010; 107:5100-5.