

SGSM3 Antibody
Catalog # ASC11549**Specification**

SGSM3 Antibody - Product Information

Application	WB, IF, E
Primary Accession	Q96HU1
Other Accession	CAQ08933 , 168985143
Reactivity	Human
Host	Rabbit
Clonality	Polyclonal
Isotype	IgG
Calculated MW	82 kDa KDa
Application Notes	SGSM3 antibody can be used for detection of SGSM3 by Western blot at 1 µg/mL. For immunofluorescence start at 20 µg/mL.

SGSM3 Antibody - Additional InformationGene ID **27352****Target/Specificity**

SGSM3; Multiple isoforms of SGSM3 are known to exist. SGSM3 antibody is predicted to not cross react with other SGSM family proteins.

Reconstitution & Storage

SGSM3 antibody can be stored at 4°C for three months and -20°C, stable for up to one year. As with all antibodies care should be taken to avoid repeated freeze thaw cycles. Antibodies should not be exposed to prolonged high temperatures.

Precautions

SGSM3 Antibody is for research use only and not for use in diagnostic or therapeutic procedures.

SGSM3 Antibody - Protein Information**Name** SGSM3 ([HGNC:25228](#))**Function**

May play a cooperative role in NF2-mediated growth suppression of cells.

Cellular Location

Cytoplasm.

Tissue Location

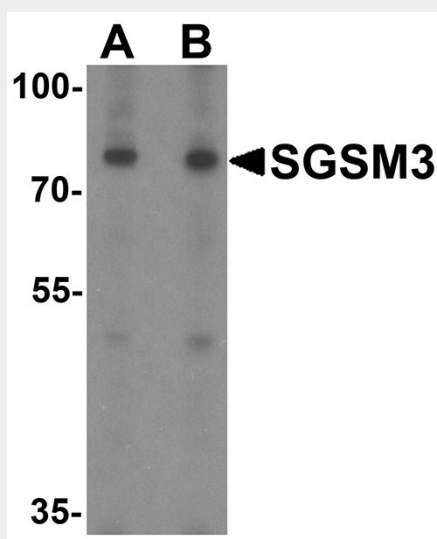
Widely expressed..

SGSM3 Antibody - Protocols

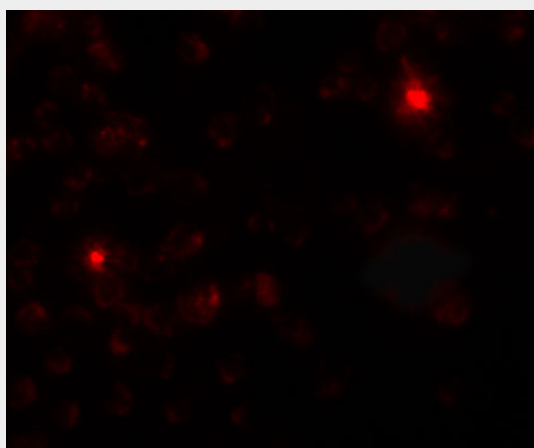
Provided below are standard protocols that you may find useful for product applications.

- [Western Blot](#)
- [Blocking Peptides](#)
- [Dot Blot](#)
- [Immunohistochemistry](#)
- [Immunofluorescence](#)
- [Immunoprecipitation](#)
- [Flow Cytometry](#)
- [Cell Culture](#)

SGSM3 Antibody - Images



Western blot analysis of SGSM3 in 293 cell lysate with SGSM3 antibody at (A) 1 and (B) 2 µg/mL.



Immunofluorescence of SGSM3 in 293 cells with SGSM3 antibody at 20 µg/mL.

SGSM3 Antibody - Background

SGSM3 Antibody: Small G proteins such as RAP and RAB proteins are the key molecules in intracellular signal transduction and vesicle transportation. A novel protein family small G protein signaling modulator (SGSM) consisting of three members SGSM1-3 bind to RAP and RAB family proteins. All three SGSM proteins possess both a RUN domain and a TBC domain. Little is known of the exact function of SGSM3.

SGSM3 Antibody - References

Bar-Sagi D and Hall A. Ras and Rho GTPases: a family reunion. Cell 2000; 103:227-38.
Colicelli J. Human ras superfamily proteins and related GTPases. Sci. STKE 2004; 250:RE13.
Yang H, Sasaki T, Minoshima S, et al. Identification of three novel proteins (SGSM1, 2, 3) which modulate small G protein (RAP and RAB)-mediated signaling pathway. Genomics 2007; 90:249-60.