

GHDC Antibody
Catalog # ASC11559**Specification**

GHDC Antibody - Product Information

Application	WB, IF, E
Primary Accession	Q8N2G8
Other Accession	NP_115873 , 14210490
Reactivity	Human, Mouse, Rat
Host	Rabbit
Clonality	Polyclonal
Isotype	IgG
Calculated MW	58 kDa KDa
Application Notes	GHDC antibody can be used for detection of GHDC by Western blot at 0.5 - 1 µg/mL. For immunofluorescence start at 20 µg/mL.

GHDC Antibody - Additional InformationGene ID **84514****Target/Specificity**

GHDC; Multiple isoforms are known to exist.

Reconstitution & Storage

GHDC antibody can be stored at 4°C for three months and -20°C, stable for up to one year. As with all antibodies care should be taken to avoid repeated freeze thaw cycles. Antibodies should not be exposed to prolonged high temperatures.

Precautions

GHDC Antibody is for research use only and not for use in diagnostic or therapeutic procedures.

GHDC Antibody - Protein Information**Name** GHDC**Synonyms** D11LGP1E, LGP1**Cellular Location**

Endoplasmic reticulum {ECO:0000250|UniProtKB:Q99J23}. Nucleus envelope {ECO:0000250|UniProtKB:Q99J23}

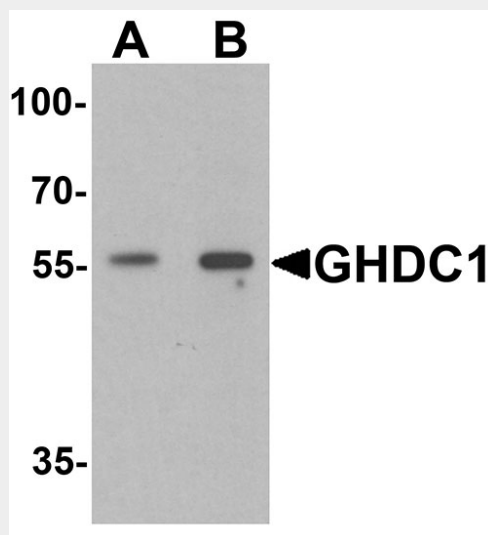
GHDC Antibody - Protocols

Provided below are standard protocols that you may find useful for product applications.

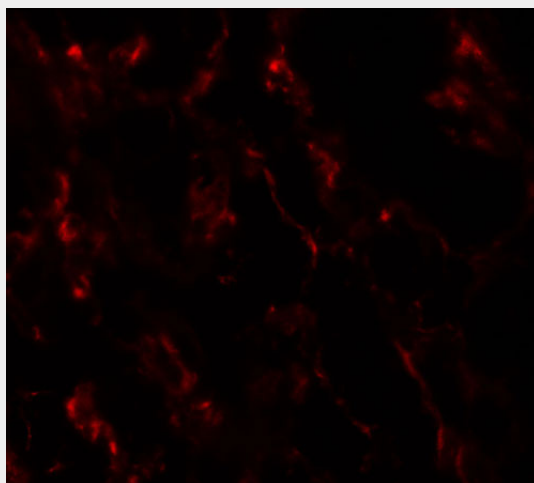
- [Western Blot](#)

- [Blocking Peptides](#)
- [Dot Blot](#)
- [Immunohistochemistry](#)
- [Immunofluorescence](#)
- [Immunoprecipitation](#)
- [Flow Cytometry](#)
- [Cell Culture](#)

GHDC Antibody - Images



Western blot analysis of GHDC in 293 cell lysate with GHDC antibody at (A) 0.5 and (B) 1 μ g/mL.



Immunofluorescence of GHDC1 in human breast tissue with GHDC1 antibody at 20 μ g/mL.

GHDC Antibody - Background

GHDC Antibody: GHDC, also known as LGP1, is a GH3 domain-containing protein that is highly expressed in normal mammary tissues and mammary tumors. GHDC is primarily located in the nuclear envelope. In mouse, its gene is located on chromosome 11 adjacent to the STAT3/5 locus. Little is known of the function of this protein.

GHDC Antibody - References

Cui Y, Li M, Walton KD, et al. The Stat3/5 locus encodes novel endoplasmic reticulum and

helicase-like proteins that are preferentially expressed in normal and neoplastic mammary tissue. Genomics 2001; 78:129-34.