

TSPY1S Antibody
Catalog # ASC11583**Specification**

TSPY1S Antibody - Product Information

Application	WB, E
Primary Accession	Q01534
Other Accession	NP_001184171 , 308522758
Reactivity	Human, Mouse
Host	Rabbit
Clonality	Polyclonal
Isotype	IgG
Calculated MW	32 kDa KDa
Application Notes	TSPY1S antibody can be used for detection of TSPY1S by Western blot at 1 - 2 µg/mL.

TSPY1S Antibody - Additional InformationGene ID **7258****Target/Specificity**

TSPY1; TSPY1S antibody is human and mouse reactive. At least three isoforms of TSPY1 are known to exist; this antibody will detect only TSPY1S

Reconstitution & Storage

TSPY1S antibody can be stored at 4°C for three months and -20°C, stable for up to one year. As with all antibodies care should be taken to avoid repeated freeze thaw cycles. Antibodies should not be exposed to prolonged high temperatures.

Precautions

TSPY1S Antibody is for research use only and not for use in diagnostic or therapeutic procedures.

TSPY1S Antibody - Protein Information**Name** TSPY1**Synonyms** TSPY**Function**

May be involved in sperm differentiation and proliferation.

Cellular Location

Cytoplasm. Nucleus. Note=Predominantly cytoplasmic. Also found in nucleus

Tissue Location

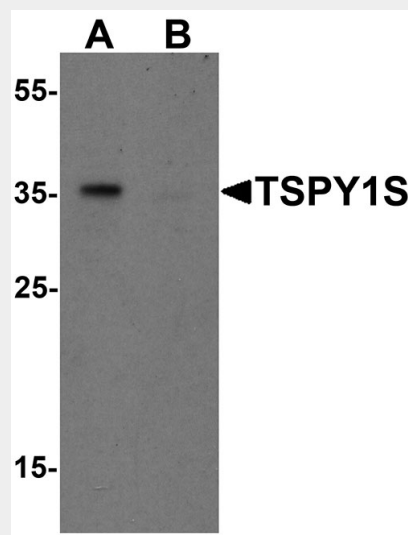
Specifically expressed in testicular tissues. Isoform 1 and isoform 2 are expressed in spermatogonia and spermatocytes. Found in early testicular carcinoma in situ, spermatogonial cells in testicular tissues of 46,X,Y female and in prostate cancer cell lines.

TSPY1S Antibody - Protocols

Provided below are standard protocols that you may find useful for product applications.

- [Western Blot](#)
- [Blocking Peptides](#)
- [Dot Blot](#)
- [Immunohistochemistry](#)
- [Immunofluorescence](#)
- [Immunoprecipitation](#)
- [Flow Cytometry](#)
- [Cell Culture](#)

TSPY1S Antibody - Images



Western blot analysis of TSPY1S in A20 cell lysate with TSPY1S antibody at 1 µg/mL in (A) the absence and (B) the presence of blocking peptide.

TSPY1S Antibody - Background

TSPY1S Antibody: Testis-specific protein on Y chromosome (TSPY1) is an ampliconic gene on the Y chromosome that has been associated with gonadoblastoma. Recent experiments have shown that in androgen-dependent testicular germ-cell tumors, TSPY1 can repress the androgen-bound androgen receptor (AR), a member of the nuclear steroid hormone receptor family that acts as a ligand-inducible transcription factor, suggesting that TSPY1 is a repressor of cell proliferation in germ-cell tumors and potentially in normal gonadal cells during early development. Two distinct isoforms of TSPY1, TSPY1L and TSPY1S, are known to exist.

TSPY1S Antibody - References

Arnemann J, Jakubiczka S, Thuring S, et al. Cloning and sequence analysis of a human Y-chromosome-derived, testicular cDNA, TSPY. *Genomics* 1991; 11:108-114
Lau YF. Gonadoblastoma, testicular and prostate cancers, and the TSPY gene. *Am. J. Hum. Genet.* 1999; 64:921-7.
Akimoto C, Ueda T, Inoue K, et al. Testis-specific protein on Y chromosome (TSPY) represses the activity of the androgen receptor in androgen-dependent testicular germ-cell tumors. *Proc. Natl. Acad. Sci. USA* 2010; 107:19891-6.

Krick R, Jacubiczka S, and Arnemann J. Expression, alternative splicing and haplotype analysis of transcribed testis specific protein (TSPY) genes. Gene 2003; 302:11-9.