

CHCHD6 Antibody
Catalog # ASC11584**Specification**

CHCHD6 Antibody - Product Information

Application	WB, E
Primary Accession	Q9BRQ6
Other Accession	NP_115719 , 14150134
Reactivity	Human
Host	Rabbit
Clonality	Polyclonal
Isotype	IgG
Calculated MW	Predicted: 26 kDa KDa
Application Notes	CHCHD6 antibody can be used for detection of CHCHD6 by Western blot at 1 - 2 µg/mL.

CHCHD6 Antibody - Additional InformationGene ID **84303****Target/Specificity**

CHCHD6; CHCHD6 is predicted to not cross-react to other members of the CHCHD family.

Reconstitution & Storage

CHCHD6 antibody can be stored at 4°C for three months and -20°C, stable for up to one year.

Precautions

CHCHD6 Antibody is for research use only and not for use in diagnostic or therapeutic procedures.

CHCHD6 Antibody - Protein Information**Name** CHCHD6**Synonyms** CHCM1, MIC25**Function**

Component of the MICOS complex, a large protein complex of the mitochondrial inner membrane that plays crucial roles in the maintenance of crista junctions, inner membrane architecture, and formation of contact sites to the outer membrane.

Cellular Location

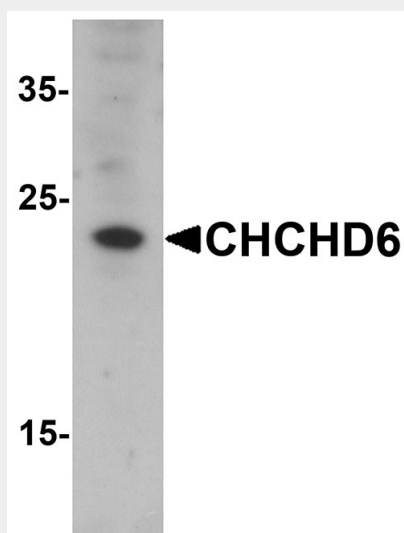
Mitochondrion inner membrane; Lipid-anchor. Mitochondrion

CHCHD6 Antibody - Protocols

Provided below are standard protocols that you may find useful for product applications.

- [Western Blot](#)
- [Blocking Peptides](#)
- [Dot Blot](#)
- [Immunohistochemistry](#)
- [Immunofluorescence](#)
- [Immunoprecipitation](#)
- [Flow Cytometry](#)
- [Cell Culture](#)

CHCHD6 Antibody - Images



Western blot analysis of CHCHD6 in SK-N-SH cell lysate with CHCHD6 antibody at 1 µg/mL.

CHCHD6 Antibody - Background

CHCHD6 Antibody: CHCHD6 is a member of a family of proteins containing a conserved (coiled coil 1)-(helix 1)-(coiled coil 2)-(helix 2) domain and has been observed in a complex with the mitochondrial proteins mitofilin, SAM50, metaxins 1 and 2, and CHCHD3. CHCHD6 knockdown causes severe defects in mitochondrial cristae morphology as well as reductions in cell growth, ATP production and oxygen consumption. This decrease of CHCHD6 also led to a reduction in mitofilin protein levels, while a knockdown of mitofilin resulted in a reduced level of CHCHD6, suggesting coordinate regulation between these two proteins. CHCHD6 knockdown in human cancer cells enhances their sensitivity to genotoxic anticancer drugs, suggesting that CHCHD6 may be a potential therapeutic anti-tumor target.

CHCHD6 Antibody - References

Xie J, Marusich MF, Souda P, et al. The mitochondrial inner membrane protein Mitofilin exists as a complex with SAM50, metaxins 1 and 2, coiled-coil-helix coiled-coil-helix domain-containing protein 3 and 6 and DnaJC11. FEBS Lett. 2007; 581:3545-9.

An J, Shi J, He Q, et al. CHCM1/CHCHD6, novel mitochondrial protein linked to regulation of mitofilin and mitochondrial cristae morphology. J. Biol. Chem. 2012; 287:7411-26.