

**IL-17RE Antibody**  
**Catalog # ASC11598****Specification**

---

**IL-17RE Antibody - Product Information**

Application	WB
Primary Accession	<a href="#">Q8NFR9</a>
Other Accession	<a href="#">NP_705616</a> , <a href="#">301129232</a>
Reactivity	Human, Mouse, Rat
Host	Rabbit
Clonality	Polyclonal
Isotype	IgG
Calculated MW	Predicted: 78 kDa KDa
Application Notes	IL-17RE antibody can be used for detection of IL-17RE by Western blot at 1 - 2 µg/mL.

**IL-17RE Antibody - Additional Information**

Gene ID	132014
Target/Specificity	
IL17RE;	

**Reconstitution & Storage**

IL-17RE antibody can be stored at 4°C for three months and -20°C, stable for up to one year.

**Precautions**

IL-17RE Antibody is for research use only and not for use in diagnostic or therapeutic procedures.

**IL-17RE Antibody - Protein Information**

**Name** IL17RE

**Function**

Specific functional receptor for IL17C. May be signaling through the NF-kappa-B and MAPK pathways. May require TRAF3IP2 /ACT1 for signaling. May be a crucial regulator in innate immunity to bacterial pathogens. Isoform 2 and isoform 4 may be either cytoplasmic inactive or dominant active forms. Isoform 3 and isoform 5 may act as soluble decoy receptors.

**Cellular Location**

[Isoform 1]: Cell membrane; Single- pass type I membrane protein [Isoform 3]: Secreted. [Isoform 5]: Secreted.

**Tissue Location**

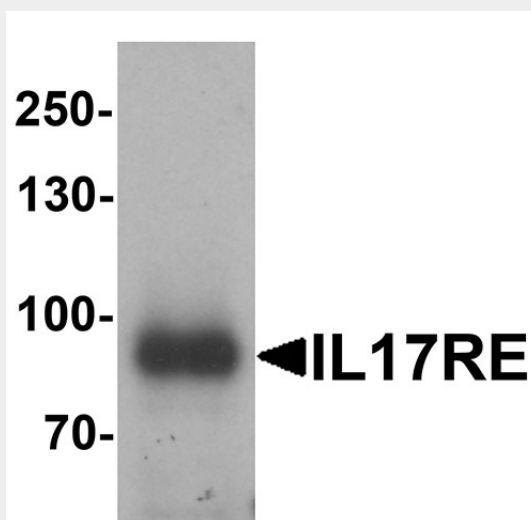
Predominantly expressed in mucosal tissues with high levels in keratinocytes and colon epithelial cells. Very low expression in dermal fibroblasts. Expressed in various tumor cell lines.

## IL-17RE Antibody - Protocols

Provided below are standard protocols that you may find useful for product applications.

- [Western Blot](#)
- [Blocking Peptides](#)
- [Dot Blot](#)
- [Immunohistochemistry](#)
- [Immunofluorescence](#)
- [Immunoprecipitation](#)
- [Flow Cytometry](#)
- [Cell Culture](#)

## IL-17RE Antibody - Images



Western blot analysis of IL-17RE in human ovary tissue lysate with IL-17RE antibody at 1 µg/mL.

## IL-17RE Antibody - Background

**IL-17RE Antibody:** The interleukin 17 receptor E (IL-17RE) shares limited similarity to the receptor of IL-17A, a ubiquitous type I membrane glycoprotein that with IL-17A plays a pathogenic role in many inflammatory and autoimmune diseases such as rheumatoid arthritis. IL-17RE is the functional receptor of IL-17C and has been suggested to mediate mucosal immunity to infection with intestinal pathogens. IL-17C is produced by epithelia in response to bacterial challenge and binds to a receptor complex formed by IL-17RE and IL-17RA on the epithelial cell surface, thereby regulating the immune function of epithelial cells in an autocrine manner.

## IL-17RE Antibody - References

Li TS, Li XN, Chang CJ, et al. Identification and functional characterization of a novel interleukin 17 receptor: a possible mitogenic activation through ras/mitogen-activated protein kinase signaling pathway. *Cell Signal*. 2006; 18:1287-98.

Moseley TA, Haudenschild DR, Rose L, et al. Interleukin-17 family and IL-17 receptors. *Cytokine Growth Factor Rev*. 2003; 14:155-74.

Song Z, Zhu S, Shi P, et al. IL-17RE is the functional receptor for IL-17C and mediates mucosal immunity to infection with intestinal pathogens. *Nat. Immunol*. 2011; 12:1151-8.

Ramirez-Carrozzi V, Sambandam A, Luis E, et al. IL-17C regulates the innate immune function of epithelial cells in an autocrine manner. *Nat. Immunol*. 2011; 12:1159-66