

**MTERFD2 Antibody**  
**Catalog # ASC11636****Specification**

---

**MTERFD2 Antibody - Product Information**

Application	WB, IHC, IF
Primary Accession	<a href="#">Q7Z6M4</a>
Other Accession	<a href="#">NP_872307</a> , <a href="#">42740903</a>
Reactivity	Human, Mouse, Rat
Host	Rabbit
Clonality	Polyclonal
Isotype	IgG
Calculated MW	Predicted: 42 kDa
Application Notes	Observed: 44 kDa KDa MTERFD2 Antibody can be used for detection of MTERFD2 by Western blot at 1 µg/mL.

**MTERFD2 Antibody - Additional Information**Gene ID **130916****Target/Specificity**

MTERFD2; At least three isoforms of MTERFD2 are known to exist. MTERFD2 antibody is predicted to not cross-react with other MTERFD protein family members.

**Reconstitution & Storage**

MTERFD2 antibody can be stored at 4°C for three months and -20°C, stable for up to one year.

**Precautions**

MTERFD2 Antibody is for research use only and not for use in diagnostic or therapeutic procedures.

**MTERFD2 Antibody - Protein Information****Name** MTERF4**Synonyms** MTERFD2**Function**

Regulator of mitochondrial ribosome biogenesis and translation. Binds to mitochondrial ribosomal RNAs 16S, 12S and 7S and targets NSUN4 RNA methyltransferase to the mitochondrial large ribosomal subunit (39S).

**Cellular Location**

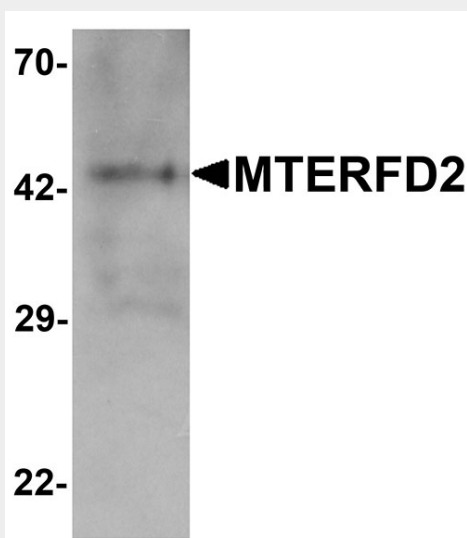
Mitochondrion

## MTERFD2 Antibody - Protocols

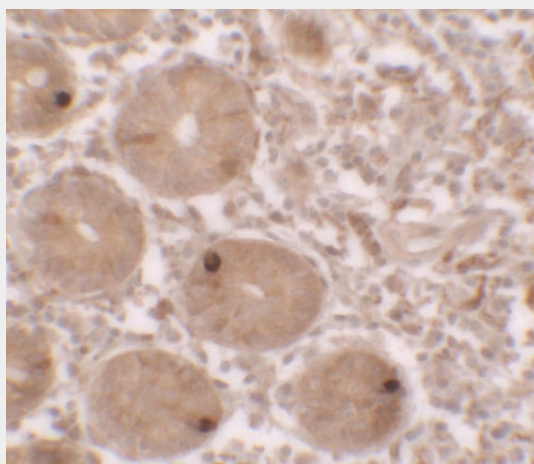
Provided below are standard protocols that you may find useful for product applications.

- [Western Blot](#)
- [Blocking Peptides](#)
- [Dot Blot](#)
- [Immunohistochemistry](#)
- [Immunofluorescence](#)
- [Immunoprecipitation](#)
- [Flow Cytometry](#)
- [Cell Culture](#)

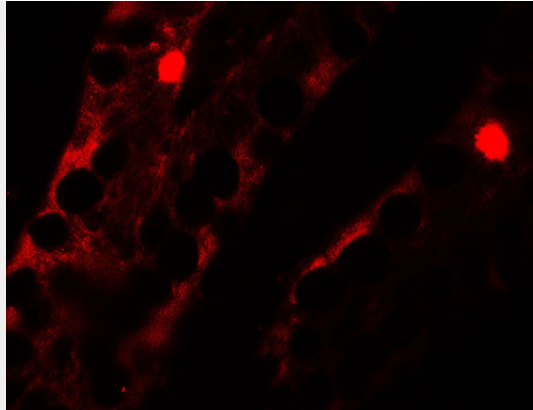
## MTERFD2 Antibody - Images



Western blot analysis of MTERFD2 in human small intestine tissue lysate with MTERFD2 antibody at 1  $\mu$ g/mL.



Immunohistochemistry of MTERFD2 in human small intestine tissue with MTERFD2 antibody at 2.5  $\mu$ g/mL.



Immunofluorescence of MTERFD2 in human small intestine tissue with MTERFD2 antibody at 20  $\mu\text{g/ml}$ .

### **MTERFD2 Antibody - Background**

**MTERFD2 Antibody:** Members of the mTERF (mitochondrial transcription termination factor) family, are mitochondrial proteins that are believed to be transcription termination factors. MTERFD2 is targeted to the mitochondria and is ubiquitously expressed, with highest expression levels in fore- and midbrain, diencephalon, spinal cord, tongue, lung liver and kidney. MTERFD2 has been suggested to play a role in organ differentiation during embryogenesis. A closely related mTERF family member, MTERFD3, is believed to be involved in cell cycle regulation and cell growth by modulating mitochondrial transcription.

### **MTERFD2 Antibody - References**

Fernandez-Silva P, et al. The human mitochondrial transcription termination factor (mTERF) is a multizipper protein but binds to DNA as a monomer, with evidence pointing to intramolecular leucine zipper interactions. *EMBO J.* 1997; 16:1066-79.

Xu Q, Zhang F, He H, et al. Expression profile of mouse Mterfd2, a novel component of the mitochondrial transcription termination (MTERF) family. *Genes Genet. Syst.* 2011; 86:269-75.

Park CB, Asin-Cayuela J, Camara Y, et al. MTERF3 is a negative regulator of mammalian mtDNA transcription. *Cell* 2007; 130:273-85.