

PRRT2 Antibody
Catalog # ASC11641**Specification**

PRRT2 Antibody - Product Information

Application	WB, IHC, IF
Primary Accession	Q7Z6L0
Other Accession	NP_001243371 , 374253783
Reactivity	Human, Mouse, Rat
Host	Rabbit
Clonality	Polyclonal
Isotype	IgG
Calculated MW	Predicted: 43 kDa
Application Notes	Observed: 44 kDa KDa PRRT2 Antibody can be used for detection of PRRT2 by Western blot at 1 µg/mL.

PRRT2 Antibody - Additional InformationGene ID **112476****Target/Specificity**

PRRT2; Multiple isoforms of PRRT2 are known to exist.

Reconstitution & Storage

PRRT2 antibody can be stored at 4°C for three months and -20°C, stable for up to one year.

Precautions

PRRT2 Antibody is for research use only and not for use in diagnostic or therapeutic procedures.

PRRT2 Antibody - Protein Information**Name** PRRT2**Function**

As a component of the outer core of AMPAR complex, may be involved in synaptic transmission in the central nervous system. In hippocampal neurons, in presynaptic terminals, plays an important role in the final steps of neurotransmitter release, possibly by regulating Ca(2+)-sensing. In the cerebellum, may inhibit SNARE complex formation and down-regulate short-term facilitation.

Cellular Location

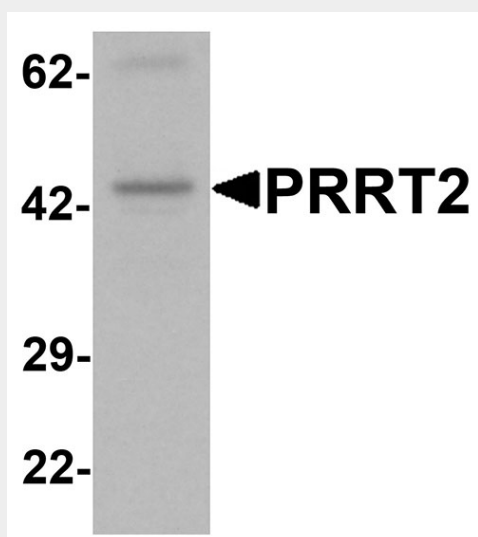
Cell membrane; Single-pass membrane protein {ECO:0000250|UniProtKB:E9PUL5}. Presynaptic cell membrane {ECO:0000250|UniProtKB:E9PUL5}; Single-pass membrane protein {ECO:0000250|UniProtKB:E9PUL5}. Synapse {ECO:0000250|UniProtKB:E9PUL5} Cell projection, axon. Cytoplasmic vesicle, secretory vesicle, synaptic vesicle membrane {ECO:0000250|UniProtKB:D3ZFB6}. Postsynaptic density membrane {ECO:0000250|UniProtKB:D3ZFB6}. Cell projection, dendritic spine {ECO:0000250|UniProtKB:D3ZFB6}

PRRT2 Antibody - Protocols

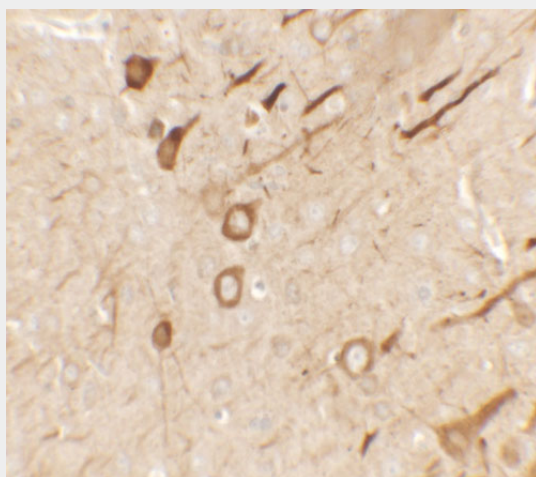
Provided below are standard protocols that you may find useful for product applications.

- [Western Blot](#)
- [Blocking Peptides](#)
- [Dot Blot](#)
- [Immunohistochemistry](#)
- [Immunofluorescence](#)
- [Immunoprecipitation](#)
- [Flow Cytometry](#)
- [Cell Culture](#)

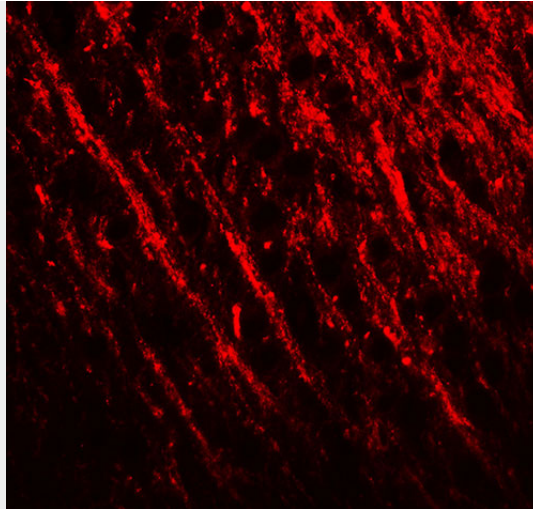
PRRT2 Antibody - Images



Western blot analysis of PRRT2 in mouse brain tissue lysate with PRRT2 antibody at 1 μ g/mL.



Immunohistochemistry of PRRT2 in rat brain tissue with PRRT2 antibody at 2.5 μ g/mL.



Immunofluorescence of PRRT2 in rat brain tissue with PRRT2 antibody at 20 µg/ml.

PRRT2 Antibody - Background

PRRT2 Antibody: The proline-rich transmembrane protein 2 (PRRT2) contains a proline-rich domain in its N-terminal half and is predominantly expressed in brain and spinal cord in embryonic and postnatal stages. While little is known of the function of this protein, mutations in PRRT2 have been shown to be the causative gene of paroxysmal kinesigenic dyskinesia, which is characterized by recurrent, brief attacks of abnormal involuntary movements induced by sudden voluntary movements. Recent studies have shown that PRRT2 may also be involved in some forms of benign familial infantile epilepsy (BFIE), an autosomal dominant epilepsy syndrome.

PRRT2 Antibody - References

Wang JL, Cao L, Li XH, et al. Identification of PRRT2 as the causative gene of paroxysmal kinesigenic dyskinesias. *Brain* 2011; 134:3493-501.
Scheffer IE, Grinton BE, Heron SE, et al. PRRT2 phenotypic spectrum includes sporadic and fever-related infantile seizures. *Neurology* 2012; epub.