

SLC27A6 Antibody
Catalog # ASC11642**Specification**

SLC27A6 Antibody - Product Information

Application	WB, IHC, IF, E
Primary Accession	Q9Y2P4
Other Accession	NP_054750 , 28965
Reactivity	Human, Mouse, Rat
Host	Rabbit
Clonality	Polyclonal
Isotype	IgG
Calculated MW	Predicted: 68 kDa

Application Notes	Observed: 68 kDa KDa SLC27A6 antibody can be used for detection of SLC27A6 by Western blot at 1 - 2 µg/mL. Antibody can also be used for Immunohistochemistry starting at 5 µg/mL. For immunofluorescence start at 20 µg/mL.
-------------------	--

SLC27A6 Antibody - Additional Information

Gene ID **28965**

Target/Specificity

SLC27A6 antibody was raised against a 16 amino acid peptide near the amino terminus of human SLC27A6. The immunogen is located within amino acids 180 - 230 of SLC27A6.

Reconstitution & Storage

SLC27A6 antibody can be stored at 4°C for three months and -20°C, stable for up to one year.

Precautions

SLC27A6 Antibody is for research use only and not for use in diagnostic or therapeutic procedures.

SLC27A6 Antibody - Protein Information

Name SLC27A6

Synonyms ACSVL2, FACVL2, FATP6

Function

Mediates the import of long-chain fatty acids (LCFA) into the cell by facilitating their transport at the plasma membrane (PubMed: [12556534](http://www.uniprot.org/citations/12556534)). Also functions as an acyl-CoA ligase catalyzing the ATP-dependent formation of fatty acyl-CoA using LCFA and very-long-chain fatty acids (VLCFA) as substrates (By similarity). Plays a pivotal role in regulating available LCFA substrates from exogenous sources in tissues undergoing high levels of beta-oxidation such as the heart (PubMed: [12556534](http://www.uniprot.org/citations/12556534)).

Cellular Location

Cell membrane, sarcolemma; Multi-pass membrane protein. Cell membrane {ECO:0000250|UniProtKB:E9Q9W4}; Multi-pass membrane protein. Note=In heart is exclusively located on the sarcolemma in areas juxtaposed with small blood vessels where it colocalizes CD36.

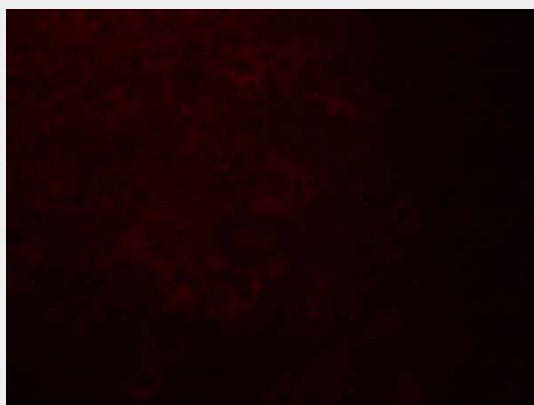
Tissue Location

Strongly expressed in heart and localizes to cardiac myocytes (PubMed:12556534). Expressed at moderate levels in placenta, testis, and adrenal glands. Expressed at very low levels in kidney, bladder and uterus.

SLC27A6 Antibody - Protocols

Provided below are standard protocols that you may find useful for product applications.

- [Western Blot](#)
- [Blocking Peptides](#)
- [Dot Blot](#)
- [Immunohistochemistry](#)
- [Immunofluorescence](#)
- [Immunoprecipitation](#)
- [Flow Cytometry](#)
- [Cell Culture](#)

SLC27A6 Antibody - Images

Immunofluorescence of QSOX1 in human spleen tissue with QSOX1 antibody at 20 µg/ml.

SLC27A6 Antibody - Background

SLC27A6 Antibody: The solute carrier family 27 (fatty acid transporter), member 6 (SLC27A6) is a member of the fatty acid transport protein family (FATP), which are involved in the uptake of long-chain fatty acids. SLC27A6 is principally expressed in the heart on the sarcolemma and colocalizes with CD36, another molecule involved in the uptake of long chain fatty acids.

SLC27A6 Antibody - References

Gimeno RE, Ortegon AM, Patel S, et al. Characterization of a heart-specific fatty acid transport protein. J. Biol. Chem. 2003;278:16039-44.

Fisher RM and Gertow K. Fatty acid transport proteins and insulin resistance. Curr. Opin. Lipidol. 2005; 16:173-8.

