

**TLX3 Antibody**  
**Catalog # ASC11663****Specification**

---

**TLX3 Antibody - Product Information**

Application	WB, IHC-P, IF, E
Primary Accession	<a href="#">O43711</a>
Other Accession	<a href="#">NP_066305</a> , <a href="#">50355978</a>
Reactivity	Human, Mouse, Rat
Host	Rabbit
Clonality	Polyclonal
Isotype	IgG
Calculated MW	Predicted: 32 kDa
Application Notes	Observed: 30 kDa KDa TLX3 antibody can be used for detection of TLX3 by Western blot at 0.5 - 1 µg/mL.

**TLX3 Antibody - Additional Information**

Gene ID **30012**  
**Target/Specificity**  
TLX3; TLX3 antibody is predicted to not cross-react with other TLX proteins.

**Reconstitution & Storage**

TLX3 antibody can be stored at 4°C for three months and -20°C, stable for up to one year.

**Precautions**

TLX3 Antibody is for research use only and not for use in diagnostic or therapeutic procedures.

**TLX3 Antibody - Protein Information**

**Name** TLX3

**Synonyms** HOX11L2

**Cellular Location**  
Nucleus.

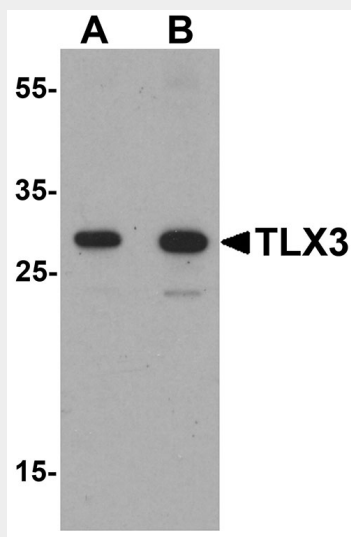
**TLX3 Antibody - Protocols**

Provided below are standard protocols that you may find useful for product applications.

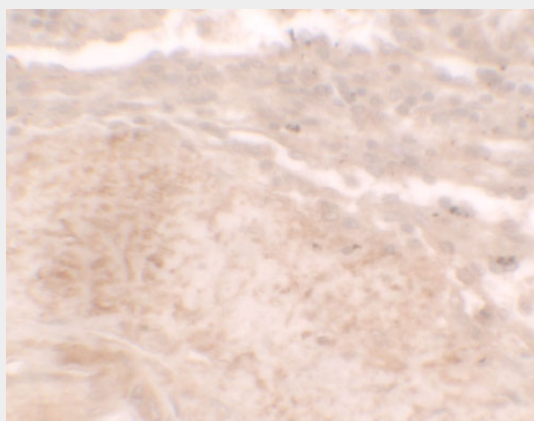
- [Western Blot](#)
- [Blocking Peptides](#)
- [Dot Blot](#)

- [Immunohistochemistry](#)
- [Immunofluorescence](#)
- [Immunoprecipitation](#)
- [Flow Cytometry](#)
- [Cell Culture](#)

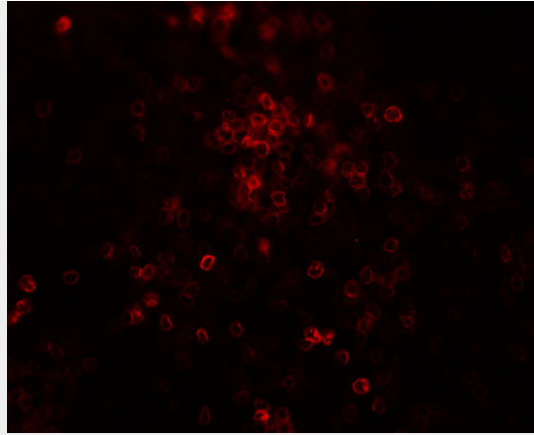
#### TLX3 Antibody - Images



Western blot analysis of TLX3 in human spleen tissue lysate with TLX3 antibody at (A) 0.5 and (B) 1  $\mu$ g/mL.



Immunohistochemistry of TLX3 in human spleen tissue with TLX3 antibody at 2.5  $\mu$ g/ml.



Immunofluorescence of TLX3 in human spleen tissue with TLX3 antibody at 20 µg/ml.

### **TLX3 Antibody - Background**

**TLX3 Antibody:** The Hox proteins play a role in patterns of embryonic development and cellular differentiation by regulating downstream target genes. TLX3, also known as homeobox11-like1 (HOX11L2), is a DNA-binding nuclear transcription factor that is expressed in a subset of the primary sensory nervous system. TLX3, along with the related TLX1, is a selector transcription factor that promotes an excitatory glutamatergic neuronal phenotype over an inhibitory GABAergic phenotype opposing LBX1 signals during dorsal spinal cord development. Chromosomal translocations of the TLX3 gene have been shown to result in some forms of T-cell acute lymphoblastic leukemia (T-ALL).

### **TLX3 Antibody - References**

Dear TN, Sanchez-Garcia I, and Rabbitts TH, et al. The Hox11 gene encodes a DNA-binding nuclear transcription factor belonging to a distinct family of homeobox genes. *Proc. Natl. Acad. Sci. USA* 1993; 90:4431-5.

Patterson KD and Kried PA. Hox11-family genes XHox11 and XHox11L2 in xenopus: XHoxL2 expression is restricted to a subset of the primary sensory neurons. *Dev. Dyn.* 1999; 214:34-43.

Cheng L, Arata A, Mizuguchi R, et al. Tlx3 and Tlx1 are post-mitotic selector genes determining the glutamatergic over GABAergic cell fates. *Nat. Neurosci.* 2004; 7:510-7.

Cheng L, Samad OA, Xu Y, et al. Lbx1 and Tlx3 are opposing switches in determining GABAergic versus glutamatergic transmitter phenotypes. *Nat. Neurosci.* 2005; 8:1510-5.