

N-RAS Antibody
Catalog # ASC11665**Specification**

N-RAS Antibody - Product Information

Application	WB, E
Primary Accession	P01111
Other Accession	NP_002515 , 4505451
Reactivity	Human, Mouse, Rat
Host	Rabbit
Clonality	Polyclonal
Isotype	IgG
Calculated MW	Predicted: 21
Application Notes	Observed: 20 KDa N-RAS antibody can be used for detection of N-RAS by Western blot at 0.5 - 1 µg/mL.

N-RAS Antibody - Additional Information

Gene ID 4893
Target/Specificity
NRAS; N-RAS antibody is predicted to not cross-react with H-RAS

Reconstitution & Storage

N-RAS antibody can be stored at 4°C for three months and -20°C, stable for up to one year.

Precautions

N-RAS Antibody is for research use only and not for use in diagnostic or therapeutic procedures.

N-RAS Antibody - Protein Information

Name NRAS

Synonyms HRAS1

Function

Ras proteins bind GDP/GTP and possess intrinsic GTPase activity.

Cellular Location

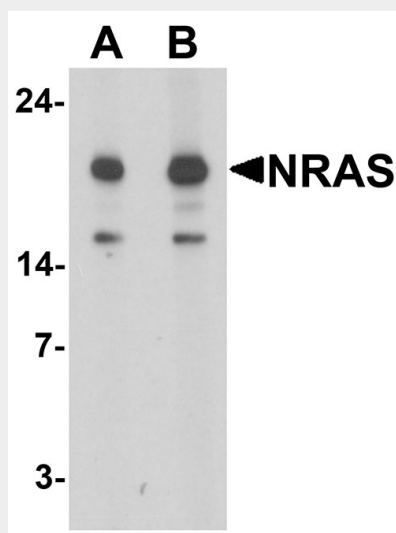
Cell membrane; Lipid-anchor; Cytoplasmic side. Golgi apparatus membrane; Lipid-anchor
Note=Shuttles between the plasma membrane and the Golgi apparatus

N-RAS Antibody - Protocols

Provided below are standard protocols that you may find useful for product applications.

- [Western Blot](#)
- [Blocking Peptides](#)
- [Dot Blot](#)
- [Immunohistochemistry](#)
- [Immunofluorescence](#)
- [Immunoprecipitation](#)
- [Flow Cytometry](#)
- [Cell Culture](#)

N-RAS Antibody - Images



Western blot analysis of N-RAS in 293 cell lysate with N-RAS antibody at (A) 1 and (B) 2 μ g/mL.

N-RAS Antibody - Background

N-RAS Antibody: Activating mutations and overexpression of classical Ras subfamily members (N-RAS, H-RAS, and K-RAS) have been widely investigated as key events in the development of human cancers. The N-RAS protein shuttles between the Golgi apparatus and the plasma membrane. This shuttling is regulated through palmitoylation and depalmitoylation by the ZDHHC9-GOLGA7 complex. N-RAS, which has intrinsic GTPase activity, is activated by a guanine nucleotide-exchange factor and inactivated by a GTPase activating protein. Mutations in this gene have been associated with somatic rectal cancer, follicular thyroid cancer, autoimmune lymphoproliferative syndrome, Noonan syndrome, and juvenile myelomonocytic leukemia.

N-RAS Antibody - References

Ehrhardt A, Ehrhardt GR, Guo X, et al. Ras and relatives--job sharing and networking keep an old family together. *Exp. Hematol.* 2002; 30:1089-106.
Swarthout JT, Lobo S, Farh L, et al. DHHC9 and GCP9 constitute a human protein fatty acyltransferase with specificity for H- and N-Ras. *J. Biol. Chem.* 2005; 280:31141-8.
Malaney S and Daly RJ. The ras signaling pathway in mammary tumorigenesis and metastasis. *J. Mammary Gland Biol. Neoplasia* 2001; 6:101-13.
Rodenhuis S. ras and human tumors. *Semin Cancer Biol.* 1992; 3:241-7