

**ARSB Antibody**  
**Catalog # ASC11693****Specification****ARSB Antibody - Product Information**

Application	WB, IHC-P, IF, E
Primary Accession	<a href="#">P15848</a>
Other Accession	<a href="#">NP_000037</a> , <a href="#">38569405</a>
Reactivity	Human, Mouse, Rat
Host	Rabbit
Clonality	Polyclonal
Isotype	IgG
Calculated MW	Predicted: 59 kDa
Application Notes	Observed: 57kDa KDa ARSB antibody can be used for detection of ARSB by Western blot at 1 - 2 µg/ml.

**ARSB Antibody - Additional Information**Gene ID **411****Target/Specificity**

ARSB; ARSB antibody is human, mouse and rat reactive. At least two isoforms of ARSB are known to exist; this antibody only recognizes the longest isoform.

**Reconstitution & Storage**

ARSB antibody can be stored at 4°C for three months and -20°C, stable for up to one year.

**Precautions**

ARSB Antibody is for research use only and not for use in diagnostic or therapeutic procedures.

**ARSB Antibody - Protein Information****Name** ARSB**Function**

Removes sulfate groups from chondroitin-4-sulfate (C4S) and regulates its degradation (PubMed:<a href="http://www.uniprot.org/citations/19306108" target="\_blank">19306108</a>). Involved in the regulation of cell adhesion, cell migration and invasion in colonic epithelium (PubMed:<a href="http://www.uniprot.org/citations/19306108" target="\_blank">19306108</a>). In the central nervous system, is a regulator of neurite outgrowth and neuronal plasticity, acting through the control of sulfate glycosaminoglycans and neurocan levels (By similarity).

**Cellular Location**

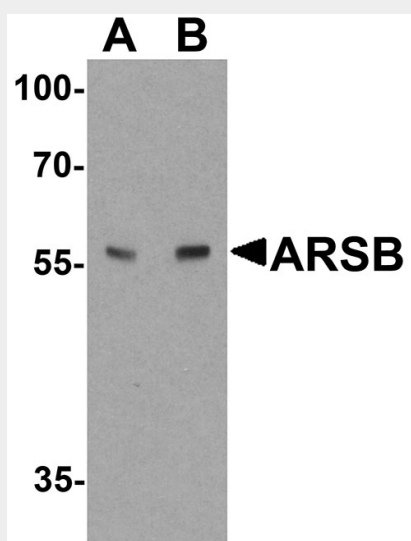
Lysosome {ECO:0000250|UniProtKB:P50429}. Cell surface {ECO:0000250|UniProtKB:P50429}

## ARSB Antibody - Protocols

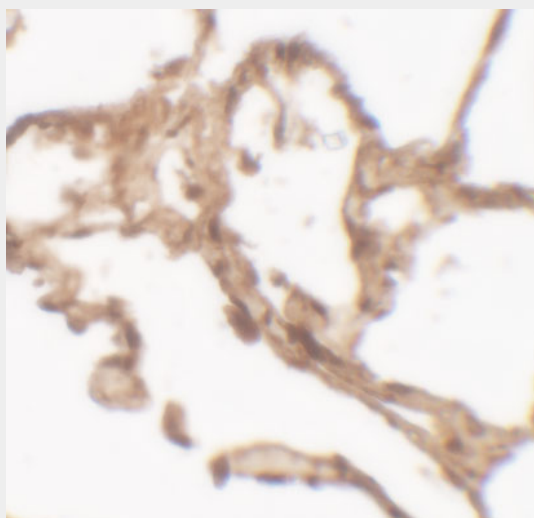
Provided below are standard protocols that you may find useful for product applications.

- [Western Blot](#)
- [Blocking Peptides](#)
- [Dot Blot](#)
- [Immunohistochemistry](#)
- [Immunofluorescence](#)
- [Immunoprecipitation](#)
- [Flow Cytometry](#)
- [Cell Culture](#)

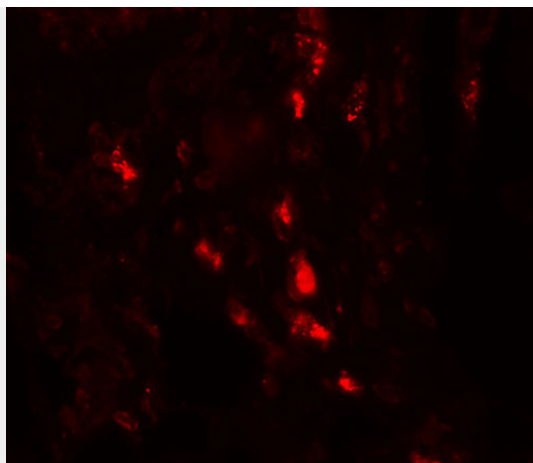
## ARSB Antibody - Images



Western blot analysis of ARSB in mouse lung tissue lysate with ARSB antibody at (A) 1 and (B) 2  $\mu\text{g/ml}$ .



Immunohistochemistry of ARSB in human lung tissue with ARSB antibody at 2.5  $\mu\text{g/mL}$ .



Immunofluorescence of ARSB in human lung tissue with ARSB antibody at 20 µg/mL.

### **ARSB Antibody - Background**

Aryl sulfatase B (ARSB) forms a homodimer that hydrolyzes sulfate groups of N-Acetyl-D-galactosamine, chondroitin sulfate, and dermatan sulfate (1). ARSB localizes to the lysosome as well as to the extracellular matrix (2). Mucopolysaccharidosis type VI is an autosomal recessive lysosomal storage disorder resulting from a deficiency of arylsulfatase B (3), and can be treated with exogenous ARSB (4).

### **ARSB Antibody - References**

Wasserman SI and Austen KF. Arylsulfatase B of human lung. Isolation, characterization, and interaction with slow-reacting substance of anaphylaxis. *J. Clin. Invest.* 1976; 57:738-44.

Mitsunaga-Nakatsubo K, Kusunoki S, Kawakami H, et al. Cell-surface arylsulfatase A and B on sinusoidal endothelial cells, hepatocytes, and Kupffer cells in mammalian livers. *Med. Mol. Morphol.* 2009; 42:63-9.

Valayannopoulos V, Nicely H, Harmatz P, et al. Mucopolysaccharidosis VI. *Orphanet. J. Rare Dis.* 2010; 5:5.

Harmatz P, Whitley CB, Waber L, et al. Enzyme replacement therapy in mucopolysaccharidosis VI (Maroteaux-Lamy syndrome). *J. Pediatr.* 2004; 144:574-80.