

COMMD7 Antibody
Catalog # ASC11721**Specification****COMMD7 Antibody - Product Information**

Application	WB, IHC-P, IF, E
Primary Accession	Q86VX2
Other Accession	NP_444269 , 151101369
Reactivity	Human, Mouse, Rat
Host	Rabbit
Clonality	Polyclonal
Isotype	IgG
Calculated MW	Predicted: 22 kDa

Application Notes	Observed: 21 kDa KDa COMMD7 antibody can be used for detection of COMMD7 by Western blot at 1 - 2 µg/ml. Antibody can also be used for Immunohistochemistry starting at 5 µg/mL. For immunofluorescence start at 20 µg/mL.
-------------------	---

COMMD7 Antibody - Additional Information

Gene ID **149951**

Target/Specificity

COMMD7; COMMD7 antibody is human, mouse and rat reactive. Multiple transcript variants encoding different isoforms have been found for COMMD7.

Reconstitution & Storage

COMMD7 antibody can be stored at 4°C for three months and -20°C, stable for up to one year.

Precautions

COMMD7 Antibody is for research use only and not for use in diagnostic or therapeutic procedures.

COMMD7 Antibody - Protein Information

Name COMMD7

Synonyms C20orf92

Function

Scaffold protein in the commander complex that is essential for endosomal recycling of transmembrane cargos; the commander complex is composed of the CCC subcomplex and the retriever subcomplex (PubMed: [37172566](http://www.uniprot.org/citations/37172566), PubMed: [38459129](http://www.uniprot.org/citations/38459129)). May modulate activity of cullin- RING E3 ubiquitin ligase (CRL) complexes (PubMed: [21778237](http://www.uniprot.org/citations/21778237)). Associates with the NF-kappa-B complex and suppresses its

transcriptional activity (PubMed:15799966).

Cellular Location

Cytoplasmic vesicle

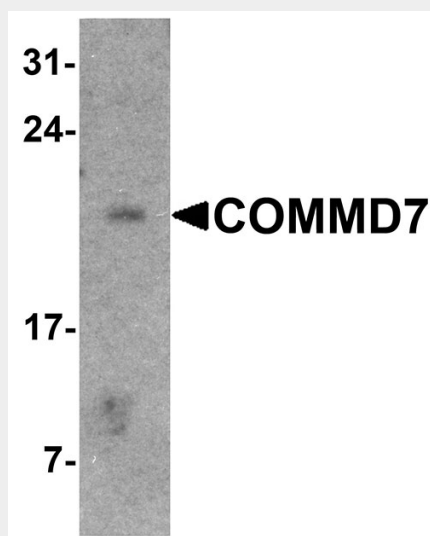
Tissue Location

Widely expressed with highest expression in lung.

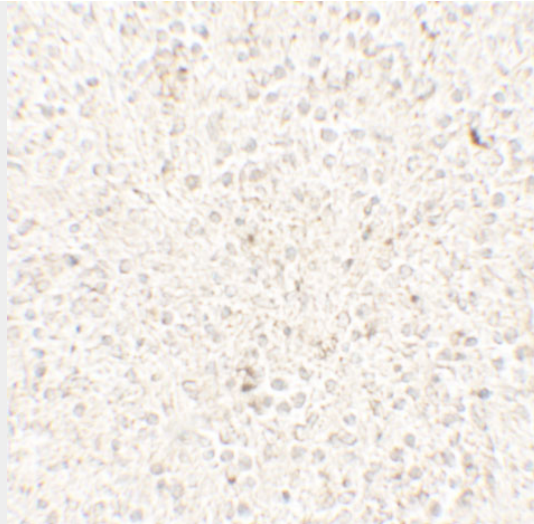
COMMD7 Antibody - Protocols

Provided below are standard protocols that you may find useful for product applications.

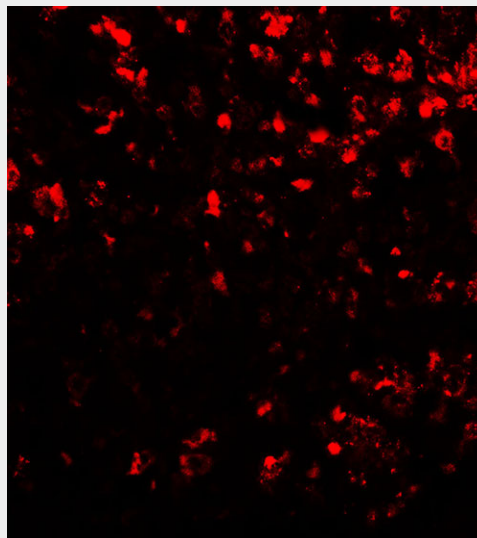
- [Western Blot](#)
- [Blocking Peptides](#)
- [Dot Blot](#)
- [Immunohistochemistry](#)
- [Immunofluorescence](#)
- [Immunoprecipitation](#)
- [Flow Cytometry](#)
- [Cell Culture](#)

COMMD7 Antibody - Images

Western blot analysis of COMMD7 in mouse spleen tissue lysate with COMMD7 antibody at 1 µg/ml.



Immunohistochemistry of COMMD7 in human spleen tissue with COMMD7 antibody at 5 µg/mL.



Immunofluorescence of COMMD7 in human spleen tissue with COMMD7 antibody at 20 µg/mL.

COMMD7 Antibody - Background

COMMD7 (COMM domain-containing protein 7) plays a role in the regulation NF-kappaB (1). It associates with the NF-kB complex and suppresses its transcriptional activity (2). COMMD7 contains 1 COMM domain and widely expressed with highest expression in lung (3). COMMD7 is a newly identified gene overexpressed in hepatocellular carcinoma (HCC) (4). COMMD7 is associated with tumor invasion and poor prognosis by NF-kappaB signaling pathway (4).

COMMD7 Antibody - References

Maine GN and Burstein E. COMMD proteins and the control of the NF kappa B pathway. *Cell Cycle* 2007; 6:672-6.
Burstein E, Hoberg JE, Wilkinson AS, et al. COMMD proteins, a novel family of structural and functional homologs of MURR1. *J. Biol. Chem.* 2005; 280:22222-32.
Narindrasorasak S, Kulkarni P, Deschamps P, et al. Characterization and copper binding properties of human COMMD1 (MURR1). *Biochemistry* 2007; 46:3116-28.
Zheng L, Liang P, Li J, et al. ShRNA-targeted COMMD7 suppresses hepatocellular carcinoma growth. *PLoS One* 2012; 7:e45412.