

PPFIA3 Antibody
Catalog # ASC11723**Specification**

PPFIA3 Antibody - Product Information

Application	WB
Primary Accession	O75145
Other Accession	NP_003651 , 32189362
Reactivity	Human, Mouse, Rat
Host	Rabbit
Clonality	Polyclonal
Isotype	IgG
Calculated MW	Predicted: 131 kDa
Application Notes	Observed: 131 kDa KDa PPFIA3 antibody can be used for detection of PPFIA3 by Western blot at 1 - 2 µg/ml.

PPFIA3 Antibody - Additional Information

Gene ID **8541**
Target/Specificity
PPFIA3; PPFIA3 antibody is human, mouse, and rat reactive.

Reconstitution & Storage

PPFIA3 antibody can be stored at 4°C for three months and -20°C, stable for up to one year.

Precautions

PPFIA3 Antibody is for research use only and not for use in diagnostic or therapeutic procedures.

PPFIA3 Antibody - Protein Information

Name PPFIA3

Synonyms KIAA0654

Function

May regulate the disassembly of focal adhesions. May localize receptor-like tyrosine phosphatases type 2A at specific sites on the plasma membrane, possibly regulating their interaction with the extracellular environment and their association with substrates.

Cellular Location

Cytoplasm {ECO:0000250|UniProtKB:Q91Z79}. Cytoplasmic vesicle, secretory vesicle, acrosome.
Note=Also detected in epididymosome {ECO:0000250|UniProtKB:Q91Z79}

Tissue Location

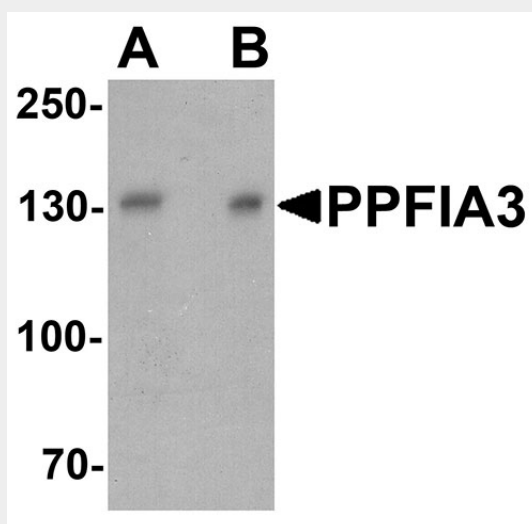
Predominantly expressed in brain (PubMed:9624153). Also detected in sperm (at protein level) (PubMed:23124857)

PPFIA3 Antibody - Protocols

Provided below are standard protocols that you may find useful for product applications.

- [Western Blot](#)
- [Blocking Peptides](#)
- [Dot Blot](#)
- [Immunohistochemistry](#)
- [Immunofluorescence](#)
- [Immunoprecipitation](#)
- [Flow Cytometry](#)
- [Cell Culture](#)

PPFIA3 Antibody - Images



Western blot analysis of PPFIA3 in 293 cell lysate with PPFIA3 antibody at (A) 1 and (B) 2 μ g/ml.

PPFIA3 Antibody - Background

The PPFIA3 protein is a member of the LAR protein-tyrosine phosphatase-interacting protein (liprin) family, a family of transmembrane protein tyrosine phosphatases known to be important for axon guidance and mammary gland development (1). Similar to the other liprin family members, PPFIA3 can interact with ERC2, a member of the ELKS-Rab6-interacting protein-CAST family of proteins at the presynaptic termini, suggesting that these proteins may play a role in the molecular organization of presynaptic zones (2).

PPFIA3 Antibody - References

Serra-Pages C, Medley QG, Tang M, et al. Liprins, a family of LAR transmembrane protein-tyrosine phosphatase-interacting proteins. *J. Biol. Chem.* 1998; 273:15611-20.
Ko J, Na M, Kim S, et al. Interaction of the ERC family of RIM-binding proteins with the liprin-alpha family of multidomain proteins. *J. Biol. Chem.* 2003; 278:42377-85.