

Betatrophin Antibody
Catalog # ASC11741**Specification**

Betatrophin Antibody - Product Information

Application	WB, IHC
Primary Accession	Q6UXH0
Other Accession	NP_061157 , 291219911
Reactivity	Human, Mouse, Rat
Host	Rabbit
Clonality	Polyclonal
Isotype	IgG
Calculated MW	Predicted: 22 kDa

Application Notes	Observed: 22 kDa KDa Betatrophin antibody can be used for detection of Betatrophin by Western blot at 1 - 2 µg/ml. Antibody can also be used for Immunohistochemistry starting at 5 µg/mL.
-------------------	---

Betatrophin Antibody - Additional Information

Gene ID **55908**

Target/Specificity

C19orf80; Betatrophin antibody is human, mouse and rat reactive. At least three isoforms of Betatrophin are known to exist; this antibody will detect the two largest isoforms.

Reconstitution & Storage

Betatrophin antibody can be stored at 4°C for three months and -20°C, stable for up to one year.

Precautions

Betatrophin Antibody is for research use only and not for use in diagnostic or therapeutic procedures.

Betatrophin Antibody - Protein Information

Name ANGPTL8 ([HGNC:24933](#))

Function

Hormone that acts as a blood lipid regulator by regulating serum triglyceride levels (PubMed:22569073, PubMed:22809513, PubMed:23150577). May be involved in the metabolic transition between fasting and refeeding; required to direct fatty acids to adipose tissue for storage in the fed state (By similarity).

Cellular Location

Secreted.

Tissue Location

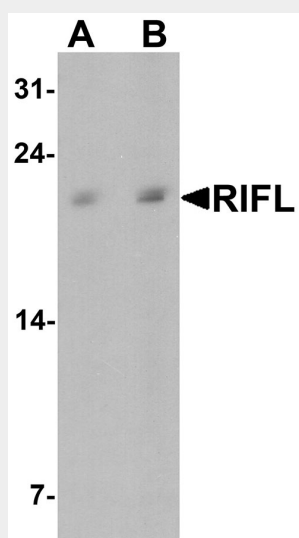
Predominantly expressed in liver. Also expressed in adipose tissues.

Betatrophin Antibody - Protocols

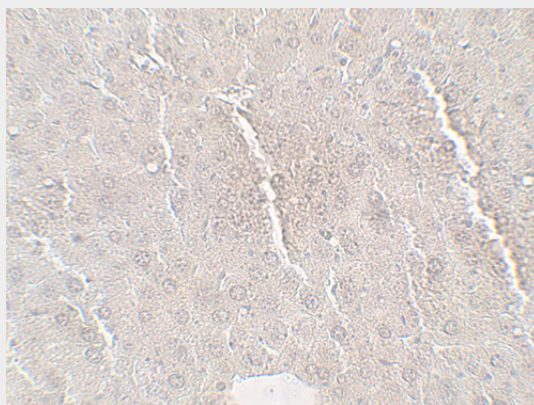
Provided below are standard protocols that you may find useful for product applications.

- [Western Blot](#)
- [Blocking Peptides](#)
- [Dot Blot](#)
- [Immunohistochemistry](#)
- [Immunofluorescence](#)
- [Immunoprecipitation](#)
- [Flow Cytometry](#)
- [Cell Culture](#)

Betatrophin Antibody - Images



Western blot analysis of Betatrophin in rat liver tissue lysate with Betatrophin antibody at (A) 1 and (B) 2 μ g/ml.



Immunohistochemistry of Betatrophin in mouse liver tissue with Betatrophin antibody at 5 μ g/mL.

Betatrophin Antibody - Background

The Betatrophin protein, also known as the hepatocellular carcinoma-associated protein TD26, is an adipocyte- and liver-enriched insulin targeted gene that is thought to play a role in lipid metabolism by regulating serum triglyceride levels (1,2). Betatrophin is closely related to the angiopoietin-like (ANGPTL) protein family. Betatrophin mRNA increases in the cold environment and after treatment with a high-fat diet, while its mRNA levels decrease in response to fasting, suggesting that it may play a role in mediating thermogenesis and energy homeostasis (3).

Betatrophin Antibody - References

Ren G, Kim JY, and Smas CM. Identification of RIFL, a novel adipocyte-enriched insulin target gene with a role in lipid metabolism. *Am. J. Endocrinol. Metab.* 2012; 303:E334-51.
Zhang R. Lipasin, a novel nutritionally-regulated liver-enriched factor that regulates serum triglyceride levels. *Biochem. Biophys. Res. Commun.* 2012; 424:786-92.
Fu Z, Yao F, Abou-Samra AB, et al. Lipasin, thermoregulated in brown fat, is a novel but atypical member of the angiopoietin-like protein family. *Biochem. Biophys. Res. Commun.* 2013; 430:1126-31.