

CRH Antibody
Catalog # ASC11801**Specification**

CRH Antibody - Product Information

Application	WB, IHC-P, IF, E
Primary Accession	P06850
Other Accession	NP_000747 , 4503041
Reactivity	Human
Host	Rabbit
Clonality	Polyclonal
Isotype	IgG
Calculated MW	Predicted: 22 kDa

Application Notes	Observed: 29 kDa KDa CRH antibody can be used for detection of CRH by Western blot at 1 - 2 µg/ml. Antibody can also be used for Immunohistochemistry at 5 µg/mL. For Immunofluorescence start at 20 µg/mL.
-------------------	---

CRH Antibody - Additional Information

Gene ID	1392
Target/Specificity	
CRH; CRH antibody is human specific.	

Reconstitution & Storage

CRH antibody can be stored at 4°C for three months and -20°C, stable for up to one year.

Precautions

CRH Antibody is for research use only and not for use in diagnostic or therapeutic procedures.

CRH Antibody - Protein Information

Name CRH

Function

Hormone regulating the release of corticotropin from pituitary gland (By similarity). Induces NLRP6 in intestinal epithelial cells, hence may influence gut microbiota profile (By similarity).

Cellular Location

Secreted {ECO:0000250|UniProtKB:P06296}.

Tissue Location

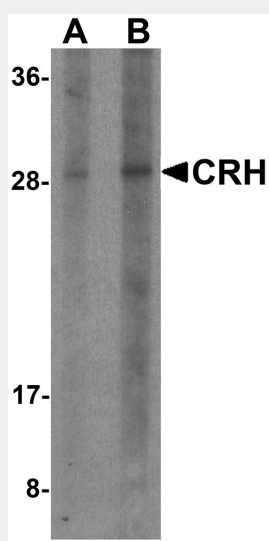
Produced by the hypothalamus and placenta.

CRH Antibody - Protocols

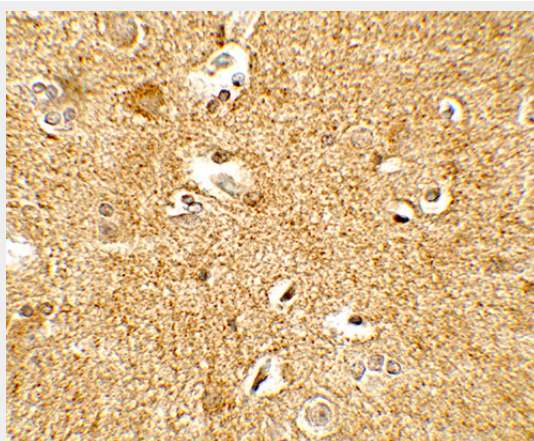
Provided below are standard protocols that you may find useful for product applications.

- [Western Blot](#)
- [Blocking Peptides](#)
- [Dot Blot](#)
- [Immunohistochemistry](#)
- [Immunofluorescence](#)
- [Immunoprecipitation](#)
- [Flow Cytometry](#)
- [Cell Culture](#)

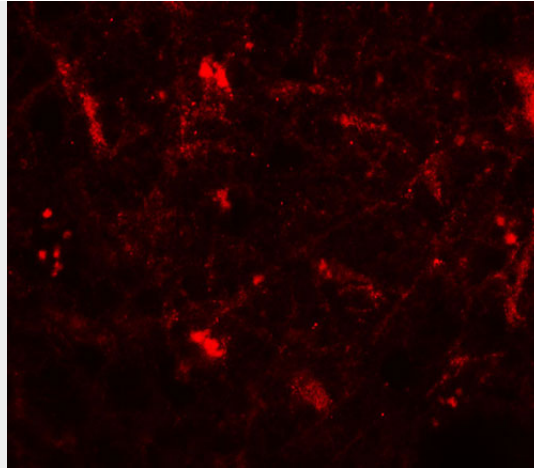
CRH Antibody - Images



Western blot analysis of CRH in human placenta tissue lysate with CRH antibody at (A) 1 and (B) 2 μ g/ml.



Immunohistochemistry of CRH in human brain tissue with CRH antibody at 5 μ g/mL.



Immunofluorescence of CRH in human brain tissue with CRH antibody at 20 µg/mL.

CRH Antibody - Background

Corticotropin-releasing hormone (CRH) is secreted by the paraventricular nucleus (PVN) of the hypothalamus in response to stress (1). In addition to production in the hypothalamus, this protein is also synthesized in peripheral tissues, such as T lymphocytes and is highly expressed in the placenta where it is a marker that determines the length of gestation and the timing of parturition and delivery. A rapid increase in circulating levels of the hormone occurs at the onset of parturition, suggesting that, in addition to its metabolic functions, this protein may act as a trigger for parturition (2). Marked reduction in this protein has been observed in association with Alzheimer disease (3).

CRH Antibody - References

Maras PM and Baram TZ. Sculpting the hippocampus from within: stress, spines, and CRH. Trends Neurosci. 2012; 315-24.

Vrachnis N, Malamas FM, Sifakis S, et al. Immune aspects and myometrial actions of progesterone and CRH in labor. Clin. Dev. Immunol. 2012; 937618.

Leake A, Perry EK, Perry RH, et al. Neocortical concentrations of neuropeptides in senile dementia of the Alzheimer and Lewy body type: comparison with Parkinson's disease and severity correlations. Biol. Psychiatry 1991; 29:357-64.