

XKR8 Antibody
Catalog # ASC11851**Specification**

XKR8 Antibody - Product Information

Application
Primary Accession
Other Accession
Reactivity
Host
Clonality
Isotype
Calculated MW

WB, IHC-P, IF, E
[Q9H6D3](#)
[NP_060523](#), [24431977](#)
Human
Rabbit
Polyclonal
IgG
Predicted: 43 kDa

Application Notes

Observed: 47 kDa KDa
XKR8 antibody can be used for detection of XKR8 by Western blot at 1 - 2 µg/ml.
Antibody can also be used for immunohistochemistry starting at 5 µg/mL.
For immunofluorescence start at 20 µg/mL.

XKR8 Antibody - Additional Information

Gene ID **55113**

Target/Specificity

XKR8; XKR8 antibody is human reactive. At least two isoforms are known to exist; this antibody will detect both isoforms.

Reconstitution & Storage

XKR8 antibody can be stored at 4°C for three months and -20°C, stable for up to one year.

Precautions

XKR8 Antibody is for research use only and not for use in diagnostic or therapeutic procedures.

XKR8 Antibody - Protein Information

Name XKR8 {ECO:0000303|PubMed:23845944, ECO:0000312|HGNC:HGNC:25508}

Function

[XK-related protein 8, processed form]: Phospholipid scramblase that promotes phosphatidylserine exposure on apoptotic cell surface (PubMed:23845944, PubMed:25231987). Phosphatidylserine is a specific marker only present at the surface of apoptotic cells and acts as a specific signal for engulfment (PubMed:23845944). Required for the clearance of apoptotic cells, such as engulfment of apoptotic germ cells by Sertoli cells, clearance of senescent neutrophils or regulation of bipolar cell numbers in the retina (By similarity). Has no effect on calcium-induced exposure of phosphatidylserine (PubMed:23845944). Promotes myoblast differentiation and survival (PubMed:28881496).

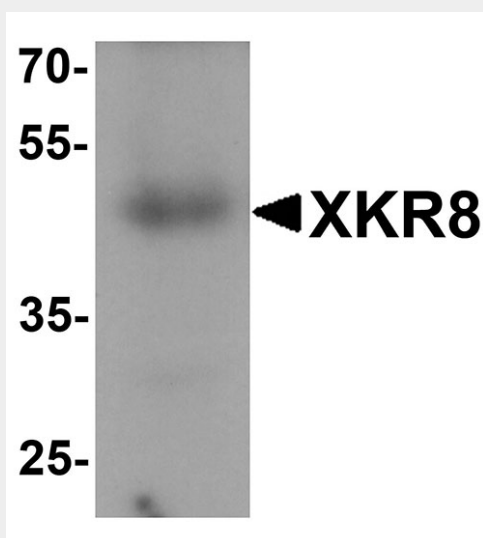
Cellular Location

Cell membrane; Multi-pass membrane protein. Cytoplasm, perinuclear region

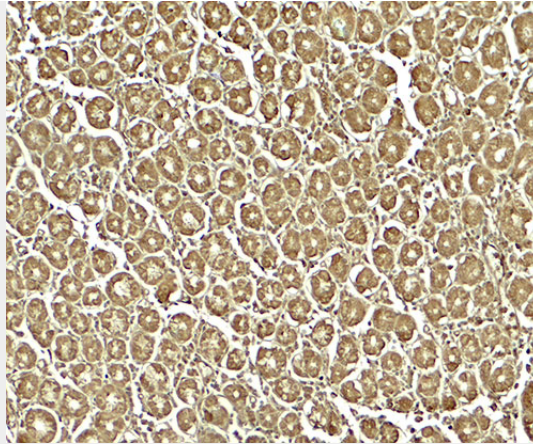
XKR8 Antibody - Protocols

Provided below are standard protocols that you may find useful for product applications.

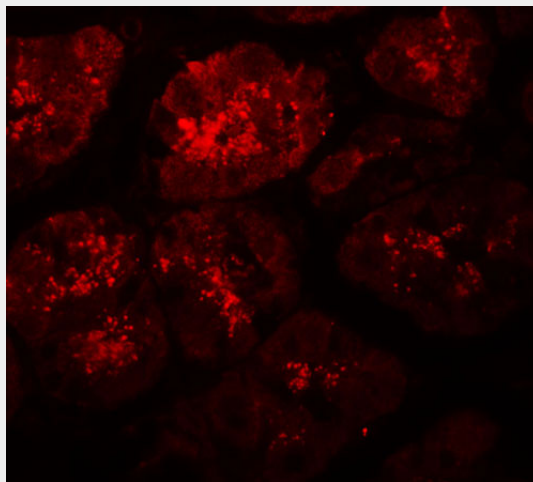
- [Western Blot](#)
- [Blocking Peptides](#)
- [Dot Blot](#)
- [Immunohistochemistry](#)
- [Immunofluorescence](#)
- [Immunoprecipitation](#)
- [Flow Cytometry](#)
- [Cell Culture](#)

XKR8 Antibody - Images

Western blot analysis of XKR8 in human stomach tissue lysate with XKR8 antibody at 1 µg/ml.



Immunohistochemistry of XKR8 in human stomach tissue with XKR8 antibody at 5 µg/ml.



Immunofluorescence of XKR8 in human stomach tissue with XKR8 antibody at 20 µg/ml.

XKR8 Antibody - Background

The XK Kell blood group complex subunit-related family member 8 (XKR8) is a member of a family of proteins that promote the phagocytosis of dying cells by altering the phospholipid distribution of the plasma membrane (1). XKR8 is thought to be a “scramblase”, an enzyme that eliminates the asymmetry of phospholipid distribution in the plasma membrane. In apoptotic cells, XKR8 promotes the cell-surface exposure of phosphatidylserine (PtdSer) which serves as a signal for phagocytosis (1,2).

XKR8 Antibody - References

Suzuki J, Denning DP, Imanishi E, et al. Xk-related protein 8 and CED-8 promote phosphatidylserine exposure in apoptotic cells. *Science* 2013; 341:403-6.
Wang X, Wu YC, Fadok VA, et al. Cell corpse engulfment mediated by *C. elegans* phosphatidylserine receptor through CED-5 and CED-12. *Science* 2003; 302:1563-6.