

GPRASP1 Antibody
Catalog # ASC11863**Specification**

GPRASP1 Antibody - Product Information

Application	WB, IHC, IF
Primary Accession	Q5JY77
Other Accession	NP_001171656 , 9737
Reactivity	Human, Mouse
Host	Rabbit
Clonality	Polyclonal
Isotype	IgG
Calculated MW	Predicted: 153 kDa; Observed: 150 kDa kDa
Application Notes	GPRASP1 antibody can be used for detection of GPRASP1 by Western blot at 1 - 2 µg/ml. Antibody can also be used for immunohistochemistry starting at 5 µg/mL. For immunofluorescence start at 20 µg/mL.

GPRASP1 Antibody - Additional InformationGene ID **9737****Target/Specificity**

GPRASP1 antibody was raised against a 15 amino acid peptide near the amino terminus of human GPRASP1.

The immunogen is located within amino acids 260 - 310 of GPRASP1.

Reconstitution & Storage

GPRASP1 antibody can be stored at 4°C for three months and -20°C, stable for up to one year.

Precautions

GPRASP1 Antibody is for research use only and not for use in diagnostic or therapeutic procedures.

GPRASP1 Antibody - Protein Information**Name** GPRASP1**Synonyms** GASP, KIAA0443**Function**

Modulates lysosomal sorting and functional down-regulation of a variety of G-protein coupled receptors. Targets receptors for degradation in lysosomes via its interaction with BECN2.

Cellular Location

Cytoplasm.

Tissue Location

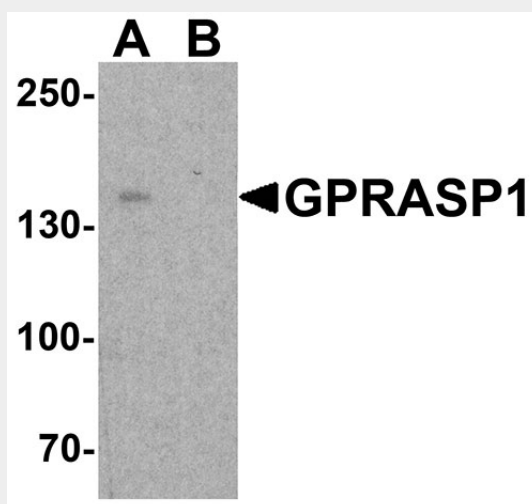
Expressed in the brain, with lower expression in medulla, spinal cord and substantia nigra

GPRASP1 Antibody - Protocols

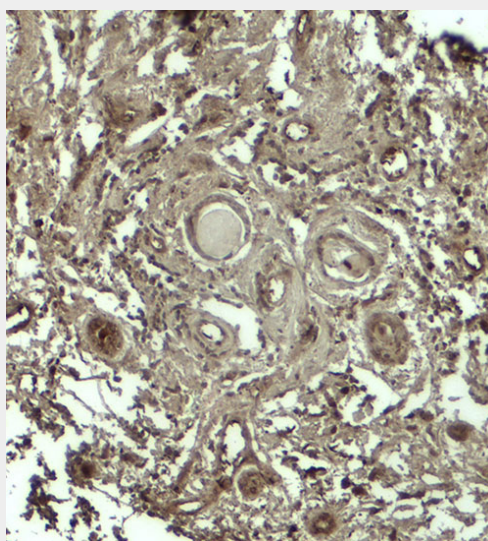
Provided below are standard protocols that you may find useful for product applications.

- [Western Blot](#)
- [Blocking Peptides](#)
- [Dot Blot](#)
- [Immunohistochemistry](#)
- [Immunofluorescence](#)
- [Immunoprecipitation](#)
- [Flow Cytometry](#)
- [Cell Culture](#)

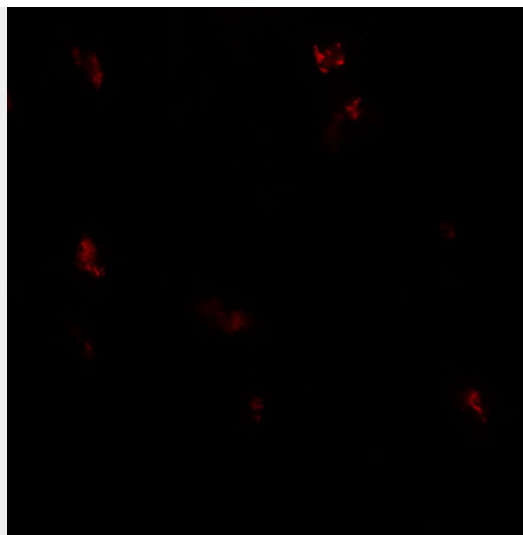
GPRASP1 Antibody - Images



Western blot analysis of GPRASP1 in A-20 cell lysate with GPRASP1 antibody at 1 μ g/ml in (A) the absence and (B) the presence of blocking peptide.



Immunohistochemistry of GPRASP1 in human breast carcinoma tissue with GPRASP12 antibody at 5 μ g/ml.



Immunofluorescence of GPRASP1 in human breast carcinoma tissue with GPRASP1 antibody at 20 μ g/ml.

GPRASP1 Antibody - Background

The G protein-coupled receptor associated sorting protein 1 (GPRASP1) is a member of the GPRASP family and is thought to modulate lysosomal sorting and functional down-regulation of a variety of G-protein coupled receptors (1,2). GPRASP1 interacts with receptors such as the D2 dopamine receptor (DRD2), delta opioid receptor (OPRD1), beta-2 adrenergic receptor (ADRB2), D4 dopamine receptor (DRD4) and cannabinoid 1 receptor (CNR1) and targets these proteins for degradation in lysosomes (2). Recently, it has been shown that increased GPRASP1 levels may act as a potential biomarker for breast cancer (3).

GPRASP1 Antibody - References

Simonin F, Karcher P, Boeuf JJ, et al. Identification of a novel family of G protein-coupled receptor associated proteins. J. Neurochem. 2004; 89:766-75.
Moser E, Kargl J, Whistler JL, et al. G protein-coupled receptor-associated sorting protein 1 regulates the postendocytic sorting of seven-transmembrane-spanning G protein-coupled receptors. Pharmacology 2010; 86:22-9.
Tuszynski GP, Rothman VL, Zheng X, et al. G-protein coupled receptor-associated sorting protein 1 (GASP-1), a potential biomarker in breast cancer. Exp. Mol. Pathol. 2011; 91:608-13.