

KLF17 Antibody
Catalog # ASC11874**Specification**

KLF17 Antibody - Product Information

Application	WB, IHC-P, E
Primary Accession	Q5JT82
Other Accession	NP_775755 , 104294874
Reactivity	Human, Mouse, Rat
Host	Rabbit
Clonality	Polyclonal
Isotype	IgG
Calculated MW	Predicted: 28, 39, 43 kDa

Application Notes	Observed: 38 kDa KDa KLF17 antibody can be used for detection of KLF17 by Western blot at 1 - 2 µg/ml. Antibody can also be used for immunohistochemistry starting at 5 µg/mL.
-------------------	---

KLF17 Antibody - Additional Information

Gene ID **128209**

Target/Specificity

KLF17; KLF17 antibody is human, mouse and rat reactive. At least two isoforms of KLF17 are known to exist; this antibody will only detect the large isoform. KLF17 antibody is predicted to not cross-react with other KLF proteins.

Reconstitution & Storage

KLF17 antibody can be stored at 4°C for three months and -20°C, stable for up to one year.

Precautions

KLF17 Antibody is for research use only and not for use in diagnostic or therapeutic procedures.

KLF17 Antibody - Protein Information

Name KLF17

Synonyms ZNF393

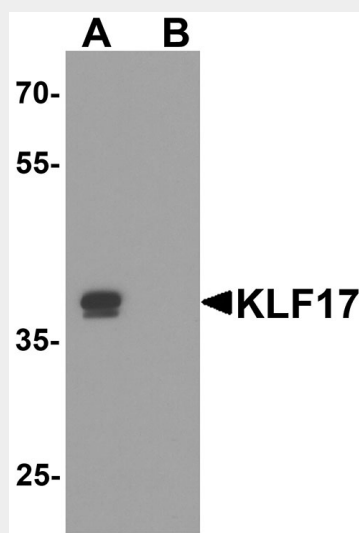
Function

Transcription repressor that binds to the promoter of target genes and prevents their expression. Acts as a negative regulator of epithelial-mesenchymal transition and metastasis in breast cancer. Specifically binds the 5'-CACCC-3' sequence in the promoter of ID1, a key metastasis regulator in breast cancer, and repress its expression. May be a germ cell-specific transcription factor that plays important roles in spermatid differentiation and oocyte development (By similarity).

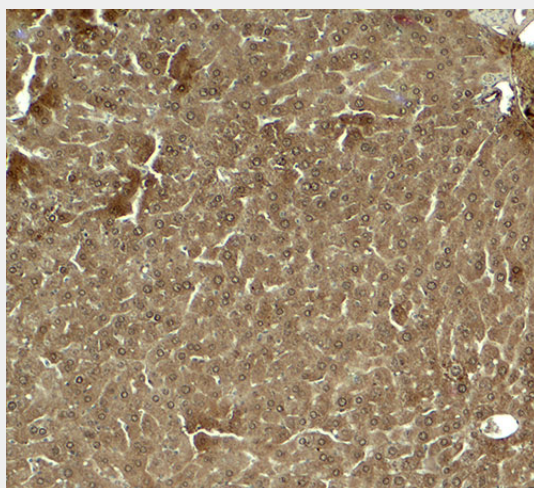
Cellular Location
Nucleus.**KLF17 Antibody - Protocols**

Provided below are standard protocols that you may find useful for product applications.

- [Western Blot](#)
- [Blocking Peptides](#)
- [Dot Blot](#)
- [Immunohistochemistry](#)
- [Immunofluorescence](#)
- [Immunoprecipitation](#)
- [Flow Cytometry](#)
- [Cell Culture](#)

KLF17 Antibody - Images

Western blot analysis of KLF17 in rat liver tissue lysate with KLF17 antibody at 1 μ g/ml in (A) the absence and (B) the presence of blocking peptide.



Immunohistochemistry of KLF17 in mouse liver tissue with KLF17 antibody at 5 µg/ml.

KLF17 Antibody - Background

KLF17, also known as ZNF393, is a member of the Sp/KLF family of transcription factors (1,2). KLF17 binds to the promoter and negatively regulates the transcription of Id-1, a key metastasis regulator in breast cancer (3). Suppression of KLF17 promotes breast cancer cell invasion and epithelial-mesenchymal transition (3). Down-regulated KLF17 expression is also associated tumor invasion and poor prognosis in hepatocellular carcinoma, suggesting that the level of KLF17 expression can serve as a prognostic indicator (4).

KLF17 Antibody - References

Yan W, Burns KH, Ma L, et al. Identification of Zfp393, a germ cell-specific gene encoding a novel zinc finger protein. *Mech. Dev.* 2002; 118:233-9.
van Vliet J, Crofts LA, Quinlan KG, et al. Human KLF17 is a new member of the Sp/KLF family of transcription factors. *Genomics* 2006; 87:474-82.
Gumireddy K, Li A, Gimotty PA, et al. KLF17 is a negative regulator of epithelial-mesenchymal transition and metastasis in breast cancer. *Nat. Cell Biol.* 2009; 11:1297-304.
Liu FY, Deng YL, Li Y, et al. Down-regulated KLF17 expression is associated with tumor invasion and poor prognosis in hepatocellular carcinoma. *Med. Oncol.* 2013; 30:425.