

**HES5 Antibody**  
**Catalog # ASC11878****Specification**

---

**HES5 Antibody - Product Information**

Application	WB, IHC-P, IF, E
Primary Accession	<a href="#">Q5TA89</a>
Other Accession	<a href="#">NP_001010926</a> , <a href="#">388585</a>
Reactivity	Human, Mouse, Rat
Host	Rabbit
Clonality	Polyclonal
Isotype	IgG
Calculated MW	Predicted: 18 kDa

Application Notes	<b>Observed: 17 kDa KDa</b> HES5 antibody can be used for detection of HES5 by Western blot at 1 - 2 µg/ml. Antibody can also be used for immunohistochemistry starting at 5 µg/mL. For immunofluorescence start at 20 µg/mL.
-------------------	--

**HES5 Antibody - Additional Information**

Gene ID **388585**

**Target/Specificity**

HES5 antibody was raised against a 19 amino acid peptide near the amino terminus of human HES5.  
The immunogen is located within the first 50 amino acids of HES5.

**Reconstitution & Storage**

HES5 antibody can be stored at 4°C for three months and -20°C, stable for up to one year.

**Precautions**

HES5 Antibody is for research use only and not for use in diagnostic or therapeutic procedures.

**HES5 Antibody - Protein Information**

**Name** HES5

**Synonyms** BHLHB38

**Function**

Transcriptional repressor of genes that require a bHLH protein for their transcription. Plays an important role as neurogenesis negative regulator (By similarity).

**Cellular Location**

Nucleus {ECO:0000255|PROSITE-ProRule:PRU00380, ECO:0000255|PROSITE-ProRule:PRU00981}

**Tissue Location**

Expressed in fetal heart and brain tumors.

### HES5 Antibody - Protocols

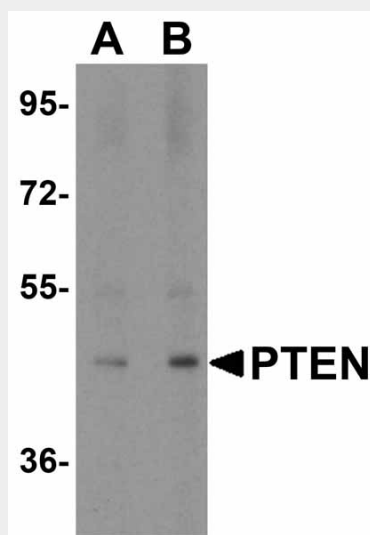
Provided below are standard protocols that you may find useful for product applications.

- [Western Blot](#)
- [Blocking Peptides](#)
- [Dot Blot](#)
- [Immunohistochemistry](#)
- [Immunofluorescence](#)
- [Immunoprecipitation](#)

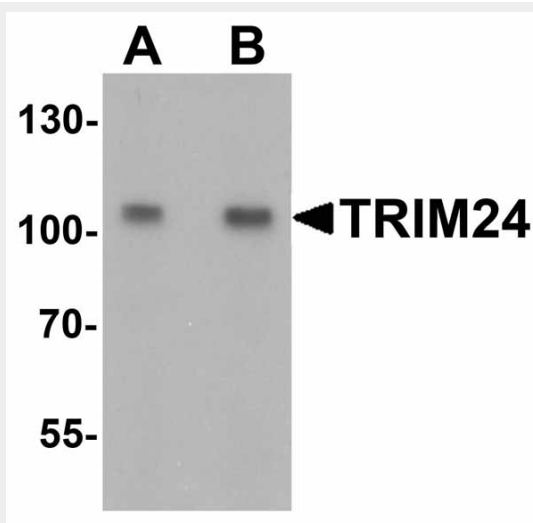
- [Flow Cytometry](#)

- [Cell Culture](#)

### HES5 Antibody - Images



Western blot analysis of PTEN in human brain tissue lysate with PTEN antibody at (A) 1 and (B) 2  $\mu$ g/mL..



Western blot analysis of TRIM24 in A431 cell lysate with TRIM24 antibody at (A) 0.5 and (B) 1  $\mu$ g/mL.

### **HES5 Antibody - Background**

HES5 is a member of the HES family of transcriptional repressors, which are the mammalian homologs of the *Drosophila* Hairy and Enhancer of Split and contain basic Helix-loop-helix (bHLH) and Orange domains (1). The HES5 gene is a downstream target of the Notch signaling pathway and its expression is downregulated during human cartilage differentiation (2). HES5 can directly repress transcription of the E3 ligase FBW7-beta, creating a feedback loop that modulates Notch-mediated intestinal and neural stem cell fate decisions (3).

### **HES5 Antibody - References**

Katoh M and Katoh M. Identification and characterization of human HES2, HES3, and HES5 genes in silico. *Int. J. Oncol.* 2004; 25:529-34.

Karlsson C, Jonsson M, Asp J, et al. Notch and HES5 are regulated during human cartilage differentiation. *Cell Tissue Res.* 2007; 327:539-51.

Sancho R, Blake SM, Tendeng C, et al. Fbw7 repression by hes5 creates a feedback loop that modulates Notch-mediated intestinal and neural stem cell fate decisions. *PLoS Biol.* 2013; 11:e1001586.