

NAP1L5 Antibody
Catalog # ASC11912**Specification**

NAP1L5 Antibody - Product Information

Application	WB, IHC, IF
Primary Accession	Q96NT1
Other Accession	NP_715638 , 24371268
Reactivity	Human, Mouse, Rat
Host	Rabbit
Clonality	Polyclonal
Isotype	IgG
Calculated MW	Predicted: 20 kDa (17kDa in mouse)

Application Notes	Observed: 15 kDa KDa NAP1L5 antibody can be used for detection of NAP1L5 by Western blot at 1 - 2 µg/mL. Antibody can also be used for immunohistochemistry starting at 5 µg/mL. For immunofluorescence start at 20 µg/mL.
-------------------	--

NAP1L5 Antibody - Additional Information

Gene ID	266812
Target/Specificity	
NAP1L5; NAP1L5 antibody is human, mouse and rat reactive.	

Reconstitution & Storage

NAP1L5 antibody can be stored at 4°C for three months and -20°C, stable for up to one year.

Precautions

NAP1L5 Antibody is for research use only and not for use in diagnostic or therapeutic procedures.

NAP1L5 Antibody - Protein Information

Name NAP1L5

Synonyms DRLM

Cellular Location

Nucleus.

Tissue Location

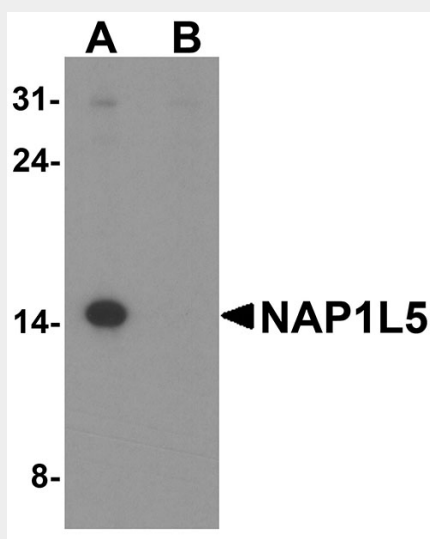
Predominantly expressed in brain.

NAP1L5 Antibody - Protocols

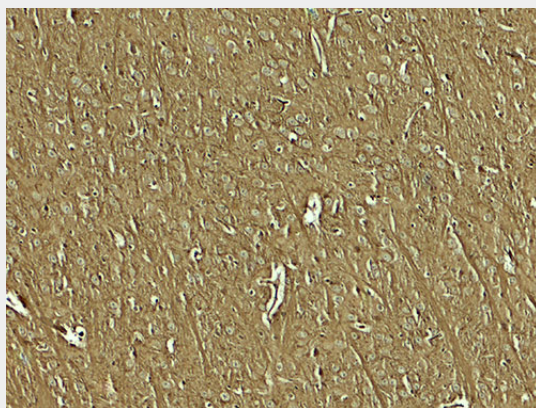
Provided below are standard protocols that you may find useful for product applications.

- [Western Blot](#)
- [Blocking Peptides](#)
- [Dot Blot](#)
- [Immunohistochemistry](#)
- [Immunofluorescence](#)
- [Immunoprecipitation](#)
- [Flow Cytometry](#)
- [Cell Culture](#)

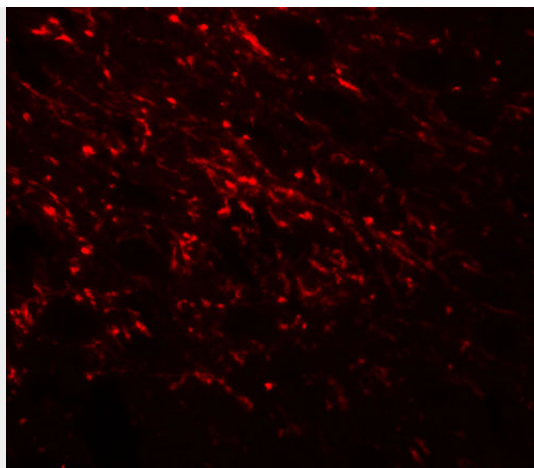
NAP1L5 Antibody - Images



Western blot analysis of NAP1L5 in EL4 cell lysate with NAP1L5 antibody at 1 μ g/ml in (A) the absence and (B) the presence of blocking peptide.



Immunohistochemistry of NAP1L5 in mouse brain tissue with NAP1L5 antibody at 5 μ g/mL.



Immunofluorescence of NAP1L5 in mouse brain tissue with NAP1L5 antibody at 20 µg/mL.

NAP1L5 Antibody - Background

The nucleosome assembly protein 1-like 5 (NAP1L5) protein, also known as DRLM, was initially identified as a possible tumor suppressor gene in hepatocellular carcinoma (1). The NAP1L5 gene is located within the intron of Herc3, and unlike Herc3, is imprinted and highly expressed in regions of the adult mouse brain (2).

NAP1L5 Antibody - References

Harada H, Nagai H, Ezura Y, et al. Down-regulation of a novel gene, DRLM, in human liver malignancy from 4q22 that encodes a NAP-like protein. *Gene* 2002; 296:171-7.
Davies W, Smith RJ, Kelsey G, et al. Expression patterns of the novel imprinted genes Nap1L5 and Peg13 and their non-imprinted host genes in the adult mouse brain. *Gene Expr. Patterns* 2004; 4:741-7.