

SNRPN Antibody
Catalog # ASC11916**Specification**

SNRPN Antibody - Product Information

Application	WB, IHC, IF
Primary Accession	P63164
Other Accession	NP_003088 , 4507135
Reactivity	Human, Mouse, Rat
Host	Rabbit
Clonality	Polyclonal
Isotype	IgG
Calculated MW	Predicted: 26 kDa

Application Notes	Observed: 25 kDa KDa SNRPN antibody can be used for detection of SNRPN by Western blot at 0.5 - 1 µg/mL. Antibody can also be used for immunohistochemistry starting at 5 µg/mL. For immunofluorescence start at 20 µg/mL.
-------------------	---

SNRPN Antibody - Additional Information

Gene ID **6638**

Target/Specificity

SNRPN; SNRPN antibody is human, mouse and rat reactive.

Reconstitution & Storage

SNRPN antibody can be stored at 4°C for three months and -20°C, stable for up to one year.

Precautions

SNRPN Antibody is for research use only and not for use in diagnostic or therapeutic procedures.

SNRPN Antibody - Protein Information

Name Snrpn

Synonyms Smn

Function

May be involved in tissue-specific alternative RNA processing events.

Cellular Location

Nucleus.

Tissue Location

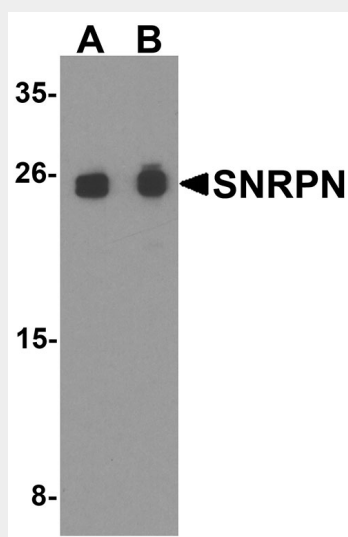
Brain specific.

SNRPN Antibody - Protocols

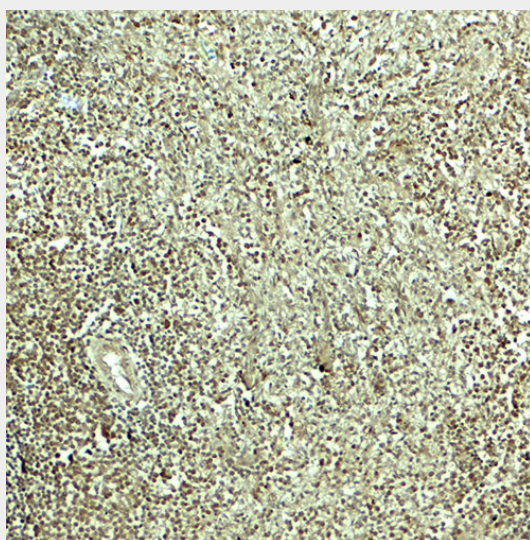
Provided below are standard protocols that you may find useful for product applications.

- [Western Blot](#)
- [Blocking Peptides](#)
- [Dot Blot](#)
- [Immunohistochemistry](#)
- [Immunofluorescence](#)
- [Immunoprecipitation](#)
- [Flow Cytometry](#)
- [Cell Culture](#)

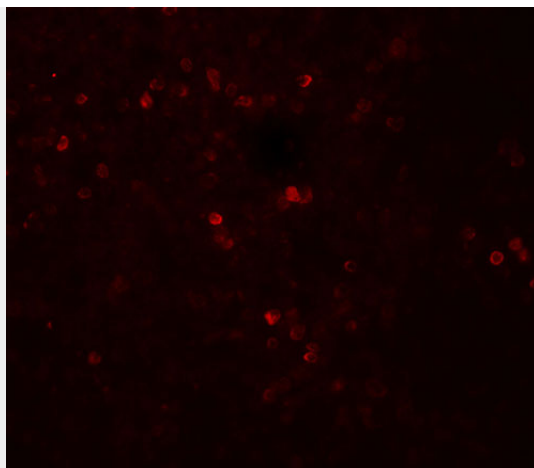
SNRPN Antibody - Images



Western blot analysis of SNRPN in THP-1 cell lysate with SNRPN antibody at (A) 0.5 and (B) 1 $\mu\text{g/ml}$.



Immunohistochemistry of SNRPN in human spleen tissue with SNRPN antibody at 5 $\mu\text{g/mL}$.



Immunofluorescence of SNRPN in human spleen tissue with SNRPN antibody at 20 µg/mL.

SNRPN Antibody - Background

The small nuclear riboprotein-associated protein N (SNRPN) is one polypeptide of a small nuclear ribonucleoprotein complex and belongs to the snRNP SMB/SMN family. SNRPN plays a role in pre-mRNA processing and alternative splicing (1). SNRPN arises from a bicistronic transcript that also encodes a protein identified as the SNRPN upstream reading frame (SNURF) (2). Mutations or deletions in the SNRPN gene may be linked to responsible for Angelman syndrome or Prader-Willi syndrome (3).

SNRPN Antibody - References

Ozcelik T, Leff S, Robinson W, et al. Small nuclear ribonucleoprotein polypeptide N (SNRPN), an expressed gene in the Prader-Willi syndrome critical region. *Nat. Genet.* 1992; 2:265-9.
Gray TA, Saitoh S, and Nicholls RD. An imprinted, mammalian bicistronic transcript encodes two independent proteins. *Proc. Natl. Acad. Sci. USA* 1999; 96:5616-21.
Chen Y, Liu YJ, Pei YF, et al. Copy number variations at the Prader-Willi syndrome region on chromosome 15 and associations with obesity in whites. *Obesity* 2011; 19:1229-34.