

WSB1 Antibody
Catalog # ASC11918**Specification**

WSB1 Antibody - Product Information

Application	WB, IHC, IF
Primary Accession	Q9Y6I7
Other Accession	NP_056441 , 18677720
Reactivity	Human
Host	Rabbit
Clonality	Polyclonal
Isotype	IgG
Calculated MW	Predicted: 46 kDa

Application Notes	Observed: 46 kDa KDa WSB1 antibody can be used for detection of WSB1 by Western blot at 1 - 2 µg/mL. Antibody can also be used for immunohistochemistry starting at 5 µg/mL. For immunofluorescence start at 20 µg/mL.
-------------------	---

WSB1 Antibody - Additional Information

Gene ID	26118
Target/Specificity	
WSB1; WSB1 antibody is human specific.	

Reconstitution & Storage

WSB1 antibody can be stored at 4°C for three months and -20°C, stable for up to one year.

Precautions

WSB1 Antibody is for research use only and not for use in diagnostic or therapeutic procedures.

WSB1 Antibody - Protein Information

Name WSB1

Synonyms SWIP1

Function

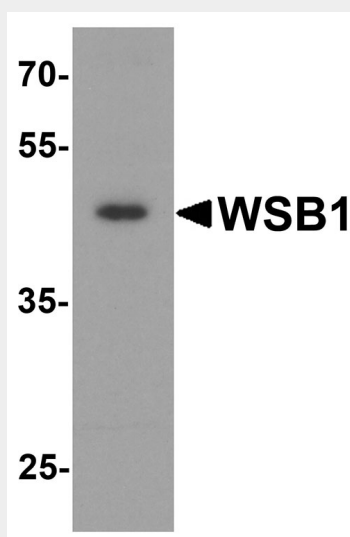
Probable substrate-recognition component of a SCF-like ECS (Elongin-Cullin-SOCS-box protein) E3 ubiquitin ligase complex which mediates the ubiquitination and subsequent proteasomal degradation of target proteins. Recognizes type II iodothyronine deiodinase/DIO2. Confers constitutive instability to HIPK2 through proteasomal degradation.

WSB1 Antibody - Protocols

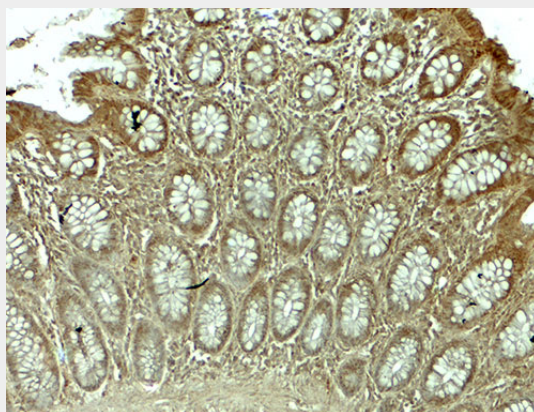
Provided below are standard protocols that you may find useful for product applications.

- [Western Blot](#)
- [Blocking Peptides](#)
- [Dot Blot](#)
- [Immunohistochemistry](#)
- [Immunofluorescence](#)
- [Immunoprecipitation](#)
- [Flow Cytometry](#)
- [Cell Culture](#)

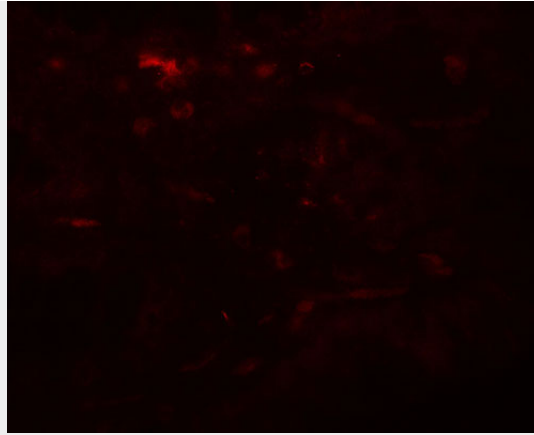
WSB1 Antibody - Images



Western blot analysis of WSB1 in human colon tissue lysate with WSB1 antibody at 1 μ g/ml.



Immunohistochemistry of WSB1 in human colon tissue with WSB1 antibody at 5 μ g/mL.



Immunofluorescence of WSB1 in human colon tissue with WSB1 antibody at 20 µg/mL.

WSB1 Antibody - Background

The WD repeat and SOCS box-containing 1 (WSB1, also known as SWIP1), is a member of the WD-protein subfamily (1). It contains six WD-repeats spanning most of the protein and an SOCS box in the C-terminus and expressed as multiple alternatively spliced isoforms (1,2). WSB1 is thought to function as part of an SCF-like ECS (Elongin-Cullin-SOCS-box protein) E3 ubiquitin ligase complex that mediates the ubiquitination and proteasomal degradation of target proteins, such as DIO2 (3). Overexpression of WSB1 is implicated in pancreatic cancer progression, suggesting a role for WSB1 in carcinogenesis (4,5).

WSB1 Antibody - References

Vasiliauskas D, Hancock S, Stern CD. SWiP-1: novel SOCS box containing WD-protein regulated by signalling centres and by Shh during development. *Mech. Dev.* 1999; 82:79-94.
Nara H, Onoda T, Rahman M, et al. WSB-1, a novel IL-21 receptor binding molecule, enhances the maturation of IL-21 receptor. *Cell Immunol.* 2011; 269:54-9.
Lv W, Zhang Y, Wu Z, et al. Identification of WSB1 gene as an important regulator in the development of zebrafish embryo during midblastula transition. *Acta Biochim. Biophys. Sin (Shanghai)* 2008; 40:478-88.
Archange C, Nowak J, Garcia S, et al. The WSB1 gene is involved in pancreatic cancer progression. *PLoS One* 2008; 3:e2475.