

AJAP1 Antibody
Catalog # ASC11919**Specification**

AJAP1 Antibody - Product Information

Application	WB, E
Primary Accession	Q9UKB5
Other Accession	NP_061324 , 9055278
Reactivity	Human, Mouse, Rat
Host	Rabbit
Clonality	Polyclonal
Isotype	IgG
Calculated MW	Predicted: 45 kDa
Application Notes	Observed: 48 kDa KDa AJAP1 antibody can be used for detection of AJAP1 by Western blot at 1 - 2 µg/ml.

AJAP1 Antibody - Additional Information

Gene ID 55966
Target/Specificity
AJAP1; AJAP1 antibody is human, mouse and rat reactive.

Reconstitution & Storage

AJAP1 antibody can be stored at 4°C for three months and -20°C, stable for up to one year.

Precautions

AJAP1 Antibody is for research use only and not for use in diagnostic or therapeutic procedures.

AJAP1 Antibody - Protein Information

Name AJAP1

Synonyms MOT8, SHREW1

Function

Plays a role in cell adhesion and cell migration.

Cellular Location

Basolateral cell membrane; Single-pass type I membrane protein. Apical cell membrane; Single-pass type I membrane protein. Cell junction, adherens junction. Note=Mainly basolateral (PubMed:16707570). Localization is mediated by AP1M2 (PubMed:16707570).

Tissue Location

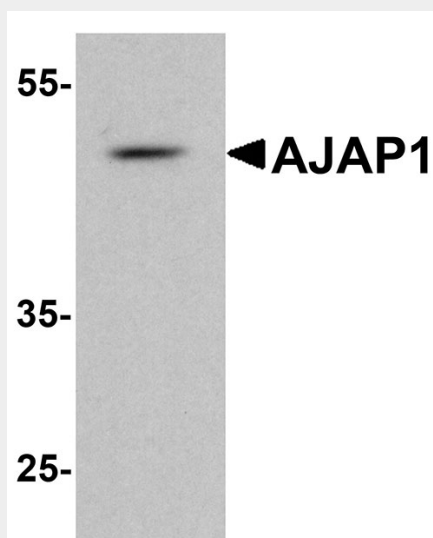
Expressed in uterus and pancreas (at protein level).

AJAP1 Antibody - Protocols

Provided below are standard protocols that you may find useful for product applications.

- [Western Blot](#)
- [Blocking Peptides](#)
- [Dot Blot](#)
- [Immunohistochemistry](#)
- [Immunofluorescence](#)
- [Immunoprecipitation](#)
- [Flow Cytometry](#)
- [Cell Culture](#)

AJAP1 Antibody - Images



Western blot analysis of AJAP1 in rat liver tissue lysate with AJAP1 antibody at 1 μ g/ml.

AJAP1 Antibody - Background

The Adherens Junction Associated Protein 1 (AJAP1) plays a key role in cell adhesion and cell migration (1). It is a transmembrane protein found on the basolateral surface of epithelium and expressed by multiple types of epithelium (1,2). AJAP1 interacts with E-Cadherin and appears to promote the internalization of E-Cadherin upon growth factor stimulation (3). This facilitates the dissolution of adherens junctions with an increase in cell motility (3,4).

AJAP1 Antibody - References

Zeng L, Fee BE, Rivas MV, et al. Adherens junctional associated protein-1: a novel 1p36 tumor suppressor candidate in gliomas (Review). *Int. J. Oncol.* 2014; 45:13-7.
Han L, Zhang KL, Zhang JX, et al. AJAP1 is dysregulated at an early stage of gliomagenesis and suppresses invasion through cytoskeleton reorganization. *CNS Neurosci. Ther.* 2014; 20:429-37.
Gross JC, Schreiner A, Engels K, et al. E-cadherin surface levels in epithelial growth factor-stimulated cells depend on adherens junction protein shrew-1. *Mol. Biol. Cell* 2009; 20:3598-607.
Lin N, Di C, Bortoff K, et al. Deletion or epigenetic silencing of AJAP1 on 1p36 in glioblastoma. *Mol. Cancer Res.* 2012; 10:208-17.